



JOBST® FarrowWrap®

LYMPHEDEMA MANAGEMENT
MADE SIMPLE WITH FARROWWRAP®
ELASTIC SHORT-STRETCH™




THERAPIES. HAND IN HAND.

www.bsnmedical.com



an Essity company

A photograph of three elderly women sitting around a round wooden table in a room with patterned wallpaper. They are playing cards. The woman on the left is wearing an orange jacket and has a cast on her right leg. The woman in the middle is wearing a pink jacket. The woman on the right is wearing a red jacket. There are cups and cards on the table. A framed picture hangs on the wall behind them.

HOW DO YOU STRIKE A BALANCE BETWEEN YOUR PATIENT'S MEDICAL NEEDS AND THEIR QUALITY OF LIFE NEEDS?

Managing a chronic illness like lymphedema over a prolonged period of time requires a dynamic approach and active patient participation. At BSN medical, we know that the ultimate goal is to empower patients to manage their condition by taking control of their own care.

MORE OPTIONS FOR YOUR PATIENTS

The JOBST® FarrowWrap® system is a compression garment that meets a wide variety of patient needs. The FarrowWrap® can adjust with the patient through the decongestion stage, allowing them to transition smoothly into the maintenance phase. The FarrowWrap® is very easy to use, aiding patients with dexterity issues, or those who have trouble donning other compression garments. All FarrowWrap® products are specifically engineered to deliver the optimal 50% band overlap and to provide consistent gradient compression.

We help healthcare providers like you find the right therapy to keep patients healthy, independent, active, and comfortable. We also focus on motivating patients to continue therapy for optimal patient outcomes.

With the integration of JOBST® FarrowWrap® products, we are a step closer to being able to offer you a full portfolio of products to help you deliver what you and your patients want: the freedom to live their lives.

FITTED

TO YOUR THERAPY
TO YOUR LIFESTYLE
TO YOUR EVERY DAY AND NIGHT

FOR LIFE

WHY JOBST® FARROWWRAP® ...

HOW IT WORKS

How does a JOBST® FarrowWrap® achieve compression?

- Utilizing special fabrics with smart elastic short-stretch bands comprised of multi-layered fabrics
- Optimal width of bands and amount of band overlap from bottom to top

It is important that every band of a JOBST® FarrowWrap® garment be applied at or near end-stretch. Having a consistent amount of tension throughout the garment helps to ensure graduated compression.

The Elastic Short-Stretch™ fabrics provide sustained resting compression while also augmenting the calf-muscle pump to deliver high working compression.

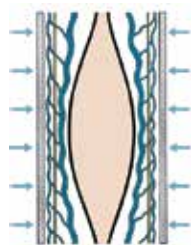
BENEFITS

- Easy use of the simple VELCRO® system saves therapists' and patients' time, and supports easy donning and doffing for maximum or optimal patient independence
- Since the product is adjustable, fluctuating edema levels can be more easily managed by the patients themselves, empowering them to control their own care
- The variety of styles and sizes available in Ready-to-Wear (RTW), Trim-to-Fit (TTF), Custom-Made (CM) ensures there is a Farrow-Wrap® to meet a broad range of clinical need

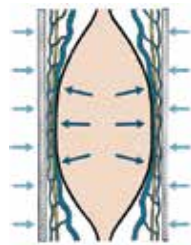


CHARACTERISTICS OF SHORT-STRETCH TECHNOLOGY

- Allows creation of products with different compression levels at end-stretch
- Provides superior augmentation of the body's natural muscle pump action
- Maximizes calf muscle function
- Helps minimize swelling throughout the day once garment is donned
- Provides higher compression when the patients stand or are active and less when they are not



The pressure, exerted onto the body from the outside when the muscles at rest, is called "resting pressure"



The pressure exerted onto the body from the inside as the muscle activates and expands, is called the "working pressure"

Short-stretch bandages deliver a low resting pressure and a high working pressure, producing a massaging effect on the calf muscle when the patient is active, which in turn produces a subsequent increase in lymphatic return. This makes short-stretch systems very effective in the management of lymphedema.

THE JOBST® FARROWWRAP® PRODUCT RANGE

LITE

Available versions

- Upper and lower limb
- Ready-to-wear (RTW)
- Trim-To-Fit (TTF)
- Custom-Made (CM)

A double-laminated fabric suitable for mild to moderate compression needs, making it especially suitable for palliative patients. The fabric is both durable and breathable.

- **Compression: 20-30 mmHg**
- **Mild to moderate chronic edema/lymphedema**

- Conforms to limb shape
- Good choice for patients who have neuropathy or peripheral vascular disease (PVD)
- Recommend for pediatric patients
- Suitable for sensitive skin, like that of palliative care patients
- Machine washable and can be tumble dried on low heat

CLASSIC

Available versions

- Upper and lower limb
- Ready-to-wear (RTW)
- Custom-Made (CM)

The original material that has been clinically proven over many years of use on thousands of patients worldwide. The rigid nature of the material offers performance beyond the compression range making it excellent for patients with moderate to severe edema.

- **Compression: 30-40 mmHg**
- **Moderate to severe chronic edema/lymphedema**

- Suitable for edema with skin folds and irregular limb shapes
- Durable, rigid fabric with a comfortable feel
- Reinforced spine for easier donning
- Less likely to roll down and will not work into skin folds
- Hand wash only and lay flat to dry

STRONG

Available versions

- Upper and lower limb
- Ready-to-wear (RTW)
- Trim-To-Fit (TTF)
- Custom-Made (CM)

Premium fabric with strong compression and soft inner layer suitable for patients with a good limb shape and moderate to severe edema.

- **Compression: 30-40 mmHg**
- **Moderate to severe chronic edema/lymphedema with a good limb shape**

- Less rigid than CLASSIC
- Contoured bands conform to the limb and resist sliding
- Highly breathable and durable
- Suitable for minor skin folds and distortion
- Material less likely to pill or fray
- Machine washable and can be tumble dried on low heat

BASIC

- Value fabric with quality compression
- Uses double-sided VELCRO® so it is possible to change band length and trim as limb reduces
- **Compression: 30-40 mmHg**
- **Suitable for moderate to severe edema/lymphedema**
- Machine washable and can be tumble dried on low heat

ACCESSORIES

Chronic edema and lymphedema patient needs vary greatly, therefore there are a range of accessories to customize the patient's wrap system or to manage mid-line edema.

- JOBST® FarrowWrap® GarmentGrip
- JOBST® FarrowBand
- VELCRO® brand hook-and-loop fastener replacement packs

4000

- Inner sleeve assists donning
- Easy to apply with just four bands
- Anatomically contoured to prevent gapping
- **Compression: 30-40 mmHg**
- **Suitable for moderate to severe edema/lymphedema**
- Machine washable and can be tumble dried on low heat

LINERS

A liner is required for all upper and lower limb pieces with the exception of the RTW upper limb armpiece.

- There are three types of liners*:
Silver, Terry Cloth Soft, Hybrid

*not all available for all variants or sizes

MANAGING LYMPHEDEMA CAN BE A COMPLEX JOURNEY ...

Since all patients are different and have different needs, different solutions are sometimes needed.

There are several compression solutions to help control limb swelling. Compression bandages and compression stockings are considered first line therapy, but don't work for all patients.



Bandaging by healthcare professionals

During the intensive treatment program phase known as Complex Decongestive Therapy (CDT), compression is performed using short-stretch compression bandages that are applied by a trained healthcare professional. Multi-layer lymphedema bandaging (MLLB) is the standard and recognized therapy for CDT. The advantage: the pressure is variable and bandages can be applied and reapplied so that as edema is reduced, the limb is reshaped.

CONCLUSION:

If you are seeing your patient regularly to apply the bandages or your patient is able to self-bandage, then MLLB may be the best solution to manage the edema. However, if MLLB is not suitable, then JOBST® FarrowWrap® compression wrap system could be the right solution.

FITTED

TO YOUR THERAPY
TO YOUR LIFESTYLE
TO YOUR EVERY DAY AND NIGHT

FOR LIFE

FIND THE BEST SOLUTION FOR YOUR PATIENT



JOBST® FarrowWrap®

Short-stretch wrap system is our new alternative product range especially for patients with fluctuating edema, rebound edema, donning and doffing problems, or for patients who have limited access to professional bandaging.

The overlapping bands provide support and rigidity to control edema. The easy-to-use wrap system offers independence as it can be removed and reapplied by the patient.

CONCLUSION:

If your patient has a fluctuating edema, difficulty in putting on a compression garment, or is unable to access bandaging, then JOBST® FarrowWrap® might be the best solution.



Flat knit stockings

During phase two of treatment known as the 'maintenance phase', flat knit compression garments are often considered the first choice. These are more aesthetically pleasing, allow normal clothing to be worn and have less layers than bandages or wrap systems. JOBST® Elvarex® for lymphedema management is the gold standard product range for lower and upper extremities.



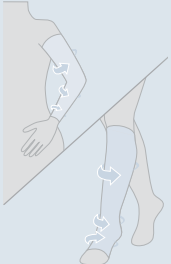

CONCLUSION:

If the edema is stabilized and your patient needs a compression garment that can be manufactured to their specific measurements and customized to their requirements, then the best solution may be a custom-made, flat knit JOBST® Elvarex® product. However, if a compression garment is not suitable, you may recommend JOBST® FarrowWrap®, a compression wrap system.

PRODUCT ASSORTMENT

	Footpiece	Legpiece	Foot Compression Liner	Thighpiece	Kneepiece	Armpiece	Ambidextrous Hand Gauntlet Foam Squares
Mild to Moderate 20-30 mmHg							
JOBST® FarrowWrap® LITE	RTW, CM, TTF	RTW, CM, TTF		RTW, CM	RTW	RTW, CM, TTF	RTW
JOBST® FarrowHybrid® ADI			RTW				
Moderate to Strong 30-40 mmHg							
JOBST® FarrowWrap® STRONG	RTW, CM, TTF	RTW, CM, TTF		RTW, CM	RTW	CM	
JOBST® FarrowWrap® CLASSIC	RTW, CM	RTW, CM		RTW, CM		CM	
JOBST® FarrowWrap® 4000		RTW					
JOBST® FarrowHybrid® ADII			RTW				
JOBST® FarrowWrap® BASIC	RTW	RTW					

RTW: Ready-To-Wear • CM: Custom-Made • TTF: Trim-To-Fit

	Hand Gauntlet Foam Squares	Legpiece	Arm- or Legpiece	Toe Cap
Accessories				
JOBST® FarrowWrap® LITE	RTW			
JOBST® Farrow GarmentGrip™ Roll*		RTW	RTW	
JOBST® Farrow® Toe Cap**				RTW

JOBST® FarrowWrap® GarmentGrip can be cut to size to fit the shape and contour of the body and VELCRO® brand hook-and-loop fasteners can be added to secure in place. For triangular-shaped legs, it is recommended that it be worn over the legpiece to secure the wrap system in place.

JOBST® FarrowBand is washable and reusable. It is available for the upper and lower limb in differing roll lengths and extra wide widths, and can also be used to manage mid-line edema.

**JOBST® FarrowWrap® Toe Caps are available in 15-20 and 20-30 mmHg.

Ready-to-wear (RTW) garments are pre-made pieces to fit the majority of patient sizes.

Trim-To-Fit (TTF) garments offer one garment for both active/reduction and maintenance therapy. A Trim-To-Fit garment can be trimmed to adapt as extremity reduces. It can fit most patients in a single size.

Custom-Made (CM) garments are manufactured to the specific limb measurements of each patient to provide a better fit for those limb shapes that do not fit within the RTW size range.

UPPER EXTREMITY

JOBST® FarrowWrap® ARMPIECE – SUITABLE FOR 24-HOUR WEAR



LITE RTW Armpiece*

LITE RTW armpiece is an anatomically contoured, effective solution to control upper extremity edema. It is easy to apply and remove with one hand and designed for mild to moderate edema control.

- 20-30 mmHg



LITE TTF Armpiece*

The LITE TTF armpiece can be customized at the point of purchase and will fit most limb sizes. The LITE TTF armpiece can be retrimmed as the patient's edema reduces.

- 20-30 mmHg



LITE Custom Armpiece*

The LITE custom armpiece consists of overlapping bands of short-stretch fabric. It generally requires two hands to apply. The short-stretch bands allow garment to be applied at end stretch.

- 20-30 mmHg



CLASSIC Custom Armpiece*

CLASSIC custom armpiece is for more severe edema requiring high levels of compression. It is only available as a custom garment and generally requires two hands to apply. Patients with very large arms or moderate to severe swelling would benefit from a CLASSIC garment.

- 30-40 mmHg



STRONG Custom Armpiece*

The STRONG custom armpiece is used in the same situations as CLASSIC but has the added benefit of ease of maintenance.

- 30-40 mmHg

* Colors: Tan, Black; Sizes: S, M, L; Available in Left or Right, and Short, Regular & Long Lengths

JOBST® FarrowWrap® HANDPIECE – SUITABLE FOR 24-HOUR WEAR



JOBST® FarrowWrap® LITE Hand Gauntlet 20-30mmHg*

JOBST® FarrowWrap® LITE Hand Gauntlet is ambidextrous and comes with 4mm and 8mm foam squares for added compression to the dorsal hand. Suitable for mild to severe edema.

Benefits that give your patient greater freedom to enjoy life:

- Foam inserts help reduce edema that can pool on the top of the hand
- Ambidextrous, i.e. can be used on either hand
- Durable and comfortable

LINER



Flesh Tone Silver Liner (Antimicrobial)**

Liner is only required for trim-to-fit custom armpiece. There is no compression in liner.

The liner provides a smooth base and skin protection prior to applying the outer wrap piece. In addition, daily washing of the outer wrap piece is not recommended due to the nature of the material and the VELCRO® brand hook-and-loop fasteners. However, a fresh liner can be worn daily as the liner can be washed as frequently as needed.

* Colors: Tan; Sizes: XS, S, M, L

** Colors: Tan; Sizes: S, L

LOWER EXTREMITY

JOBST® FarrowWrap® THIGHPIECE AND LEGPIECE – SUITABLE FOR 24-HOUR WEAR

LITE Thighpiece



JOBST® FarrowWrap® LITE* is designed for mild to moderate edema control. Available in Ready-To-Wear (RTW), Trim-To-Fit (TTF), and Custom-Made (CM). LITE garments can be machine washed and dried.†

- 20-30 mmHg

CLASSIC Thighpiece



JOBST® FarrowWrap® CLASSIC* is designed for moderate to severe edema control and resists popping into skin folds. It is available in Ready-To-Wear (RTW) and Custom-Made (CM) garments.

Hand wash only.†

- 30-40 mmHg

STRONG Thighpiece



JOBST® FarrowWrap® STRONG* is designed for moderate to severe edema control and is available in Ready-To-Wear (RTW) and Custom-Made (CM) sizes. STRONG garments can be machine washed and dried.†

- 30-40 mmHg

JOBST® FarrowWrap® BASIC* is an exceptional value and features trimmable bands and adjustable VELCRO® so the garment can be trimmed as the limb reduces. BASIC garments can be machine washed and dried.†

- 30-40 mmHg



LITE Legpiece**



CLASSIC Legpiece**



STRONG Legpiece**



BASIC Legpiece**

* Colors: Tan; Sizes: XS, S, M, L, XL; Available in Short, Regular and Tall Lengths

** Colors: Tan; Sizes: XS, S, M, L, XL; Available in Regular and Tall Lengths

† Follow care instructions in the product packaging.

JOBST® FarrowWrap® LEGPIECE – SUITABLE FOR 24-HOUR WEAR



JOBST® FarrowWrap® 4000

JOBST® FarrowWrap® 4000 legpiece is designed for moderate to severe edema and is easy to apply with just four bands and inner sleeve. It is available in RTW sizing. 4000 garments can be machine washed and dried.



JOBST® FarrowWrap® Kneepiece

JOBST® FarrowWrap® Kneepiece is a RTW garment available in LITE and STRONG. LITE can be used in combination with a JOBST® FarrowWrap® LITE Thighpiece, whereas STRONG complements the JOBST® FarrowWrap® STRONG and CLASSIC Thighpieces. Moreover, the kneepieces can be used with additional JOBST® FarrowWrap® products such as the JOBST® FarrowWrap® Legpiece and Footpiece.



Flesh Tone Silver Liner** (Antimicrobial)

- Fits up to 70cm calf circumference

The liner provides a smooth base and skin protection prior to applying the outer piece, and can be washed daily.

Customizing garments made easy with Trim-to-Fit

TTF garments can be customized on site to fit a variety of patients. You can easily retrim the garment if the patient's edema reduces. There are two TTF sizes which cover 6 standard sizes. TTF is available in STRONG and LITE fabrics.

On triangular shaped legs we recommend **JOBST® Farrow Garment-Grip™** be worn over our legpiece to help hold the garment in place.

* Colors: Tan, Black; Sizes: XS, S, M, L

** Colors: Tan; Sizes: S, L

LOWER EXTREMITY

JOBST® FarrowWrap® FOOTPIECE – SUITABLE FOR 24-HOUR WEAR



LITE Footpiece*

LITE footpiece provides compression for mild to moderate edema.

- 20-30 mmHg



CLASSIC Footpiece*

CLASSIC footpiece is clinically proven in managing edema. Durable construction.

- 30-40 mmHg



FarrowWrap® Toe Cap

Enjoy the unique benefits of the new JOBST® FarrowWrap® Ready-to-Wear Toe Cap.

The durable, latex-free Toe Caps can be used on either foot and resist rolling and fraying when trimmed.

- 15-20 and 20-30 mmHg
- Tan and Black colors



STRONG Footpiece*

STRONG TTF footpiece provides compression for moderate to severe edema. The long ankle bands can be wrapped around the ankle or over the forefoot to provide more compression where needed.

- 30-40 mmHg



BASIC Footpiece*

BASIC footpieces provide compression for moderate to severe edema.

- 30-40 mmHg

Customizing garments

TTF footpieces can be instantly customised using our proprietary TTF innovation.
Must be trimmed before donning.

* Colors: Tan; Sizes: XS, S, M, L, XL; Available in Regular and Long Lengths

COMPREHENSIVE SOLUTIONS FOR YOU AND YOUR LYMPHEDEMA PATIENTS

BSN medical focuses on integrated therapy solutions. By welcoming JOBST® FarrowWrap® into the JOBST® family of products, we now offer an extended variety of innovative products to meet the needs of patients in all therapy stages. JOBST® FarrowWrap® garments are versatile, easy to use, and offer an innovative alternative in the therapy of a lymphedema patient.



DECONGESTION

Therapy stages		LATENT Stage 0	MILD Stage 1	MODERATE Stage 2	SEVERE Stage 3
COMPRESSION PRODUCTS	WRAP SYSTEMS		JOBST® FarrowWrap® LITE		
				JOBST® FarrowWrap® STRONG	
				JOBST® FarrowWrap® CLASSIC	
	BANDAGES			JOBST® FarrowWrap® BASIC	
				JOBST® Compri2	
				Comprilan®	
SKIN AND WOUND CARE		Cutimed® ACUTE			
					Cutimed® Siltec® Range
		Cutimed® Siltec® Sorbact®			



MAINTENANCE

Therapy stages		LATENT Stage 0	MILD Stage 1	MODERATE Stage 2	SEVERE Stage 3
COMPRESSION PRODUCTS	CUSTOM GARMENTS		JOBST® Elvarex®		
			JOBST® Elvarex® Plus		
			JOBST® Elvarex® Soft		
			JOBST® Elvarex® Soft Seamless		
	READY-TO-WEAR		JOBST® Bellavar®		
		JOBST® Bella™ Lite			
			JOBST® Bella™ Strong		
	WRAPS		JOBST® FarrowWrap® LITE		
				JOBST® FarrowWrap® STRONG	
				JOBST® FarrowWrap® CLASSIC	
			JOBST® FarrowWrap® BASIC		
SKIN CARE		Cutimed® ACUTE			

INTEGRATED THERAPY SOLUTIONS FROM BSN MEDICAL

BSN medical connects its broad portfolio in lymphology, non-invasive orthopedics and wound / vascular management with strong technological competencies to meet the market's need for reduced complexity and more effective symptom and condition management. With a continuously developing unique and holistic **network of integrated therapy solutions**, BSN medical consistently supports a **continuum of care**.

WOUND / VASCULAR

LYMPHEDEMA

CHRONIC VENOUS DISEASE

PRIMARY WOUND CARE

ORTHOPEDICS

ANKLE SPRAIN

DISTAL RADIUS FRACTURE

VELCRO® is a Registered Trademark of Velcro BVBA.
Please refer to the product label and / or package insert for full instructions on the safe use of these products.

BSN medical Inc., an Essity company
5825 Carnegie Blvd., Charlotte, NC 28209-4633
Tel. (+1) 704 554 9933 Fax (+1) 800 835 4325
To order toll-free: Tel. (+1) 877 417 5187

62653 R2 ©2018 BSN medical Inc. REV 05/18



BSN medical

an Essity company