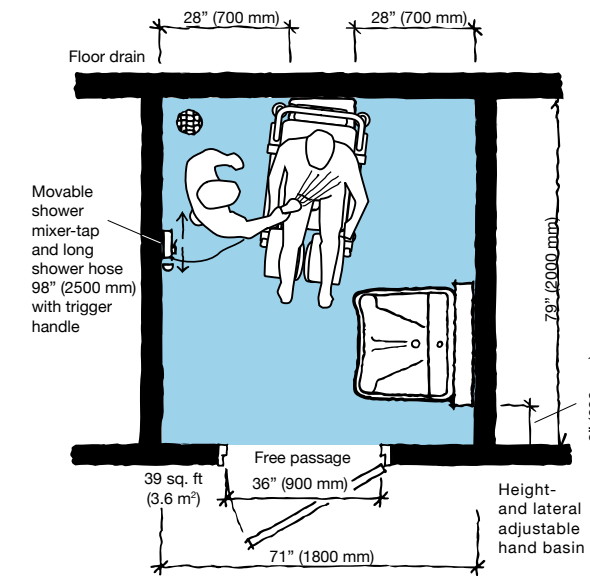


CARINO
HEIGHT-ADJUSTABLE
HYGIENE CHAIR



PRODUCT SPECIFICATIONS

Space requirement



Blue area shows the minimum working area required for the staff to be able to use the mechanical aids in an ergonomic way from one side.

Mobility Gallery

Suitable for Barbara and Carl



- B Barbara**, who can support herself to some degree
 - C Carl**, who sits in a wheelchair and has little capacity to support himself
- Please contact ArjoHuntleigh for further information on the Mobility Gallery™.

Product Information

Chassis width	24 5/8" (624 mm)
Chassis length	33 3/4" (857 mm)
Seat lowest position	17 3/4" (450 mm)
Seat highest position	14 3/8" (1050 mm)
Seat (Width)	18 2/3" (475 mm)
Seat (Length)	17 2/3" (448 mm)
Weight	93 lbs (42 kg)
Safe Working Load (SWL)	308 lbs (140 kg)

Accessories



Only ArjoHuntleigh designed parts, which are designed specifically for the purpose, should be used on the equipment and products supplied by ArjoHuntleigh. As our policy is one of continuous development we reserve the right to modify designs and specifications without prior notice.

® and ™ are trademarks belonging to the ArjoHuntleigh group of companies.
© ArjoHuntleigh, 2012.

Printed in the USA • 01.B0.01-4.CA.1.AHG • carino_broch_090210

GETINGE GROUP is a leading global provider of products and systems that contribute to quality enhancement and cost efficiency within healthcare and life sciences. We operate under the three brands of ArjoHuntleigh, GETINGE and MAQUET. **ArjoHuntleigh** focuses on patient mobility and wound management solutions. **GETINGE** provides solutions for infection control within healthcare and contamination prevention within life sciences. **MAQUET** specializes in solutions, therapies and products for surgical interventions, interventional cardiology and intensive care.



Maintain resident dignity

Showering in a height-adjustable hygiene chair a better alternative than washing in bed when considering hygiene, comfort and dignity. It is generally accepted that showering is a better cleaning method and also healthier for the resident's skin, as soap is rinsed away more effectively.

Maintaining personal dignity during assisted hygiene routines is extremely important to residents. The resident's comfort and dignity are enhanced when sitting in a height-adjustable hygiene chair, which enables comfortable recline and good eye contact with the caregiver. Showering in *Carino* ensures more dignified and personal one-to-one care, rather than being handled by the two caregivers often required for washing in bed.

Carino is a versatile aid that can provide an improved alternative for much more than showering. A range of routines including toileting, hair washing and pedicures can all be managed in a more efficient and ergonomically sound way, by a single caregiver.



Carino offers an efficient, safe and ergonomic solution for assisted showering that also ensures resident dignity during closely controlled one-to-one hygiene sessions. Hair washing is made easier and more ergonomic, as the caregiver can avoid strain by adjusting the seat height to the correct working posture.



A BETTER ALTERNATIVE FOR DAILY HYGIENE

For many residents and patients, assisted hygiene routines consist of being showered on a fixed-height shower chair. However, a safer, more efficient alternative is available: showering with dignity using a *Carino*™ height-adjustable hygiene chair.



Minimize static load

The risk of static load-related strain and injuries is a major cause of concern for caregivers involved in assisted hygiene routines. Studies have confirmed that caregivers showering residents using a fixed-height chair are subjected to high static load levels.

In fact, when assisting with these sessions, only 30-40%¹ of the time is spent working in a sound body position, resulting in a high risk of back injury and pain.

A height-adjustable, hygiene chair is the best solution for minimizing static load to protect caregivers health and safety. Investigations have shown that caregivers spend 75% of their time in sound working positions when using a height-adjustable hygiene chair². And for experienced users, this figure can be increased further.



Increase efficiency

Showering on a height-adjustable hygiene chair is not only healthier from a static load perspective, it also saves time. Although there is a widespread belief that washing a resident in bed is a quicker method, a study has revealed that showering with a height-adjustable chair can actually be 35% more efficient³.

BENEFITS FOR COMFORT, SAFETY AND MOBILITY



Caring in comfort

The resident sits fully supported by the high backrest and head cushion in a reclined position. By utilizing the unit's handset-controlled height-adjustability, the caregiver can always work comfortably at the correct working height. Every aspect, from foot-operated swivelling footplates to swing away leg-rests, have been designed in a way that combines optimum resident comfort with sound ergonomics.



Safer by design

Carino, with its unique leg-rests, is designed for maximum safety and comfort. It provides a more pleasant experience that has a positive, calming effect on residents. The arched shape of the chair means that the resident is tilted backwards more as the seat is raised, giving a reassuring feeling of security. Full integration with ArjoHuntleigh standing and raising aids creates secure solutions for resident transfers, with no need for manual handling by the caregiver.



Promoting mobility

Carino is designed to enable the resident to be more active during the hygiene session, thus stimulating mobility. With the caregiver in close attendance, it offers a safe environment in which residents can participate in showering as much as possible. Colored knobs on the armrest provide a good grip for the resident when moving into position on the seat and pulling forward before standing up.



With handset-controlled height-adjustability, the seat height can be altered to ensure a correct working posture for the caregiver and optimum comfort for the resident.



Unique, adjustable 'swing away' leg-rests self-adjust in an optimally balanced position for individual resident comfort and support sound ergonomic working routines.



The integrated grips and handles enable the caregiver to find an ergonomic grip for any maneuver. Low-friction castors make maneuvering exceptionally smooth.



While one of the two rechargeable batteries is powering *Carino*, the other is in the charger, so the hygiene chair is always available for use.



The open design of the seat enables efficient toileting and provides the caregiver with clear access for discreet washing of perineal area of the body.



Carino offers easy integration for efficient toileting routines. Compatibility with our standing and raising aids provides a safe transfer method to and from the toilet.



Design features such as flat surfaces, the foldable seat and detachable leg-rest, back-rest and head cushion enable easy, efficient cleaning and disinfection routines.

(1) Postural Load and Efficiency of Bathing and Showering: Results of a Laboratory Study by Locomotion, 1996.
 (2) The ErgoStat Program, A. Brinkhoff, N.E.Knibbe, Professional Safety, May 2003.
 (3) Gaining time & reducing physical strain by using height-adjustable hygiene chairs. Corpus study, Holland, 2005.