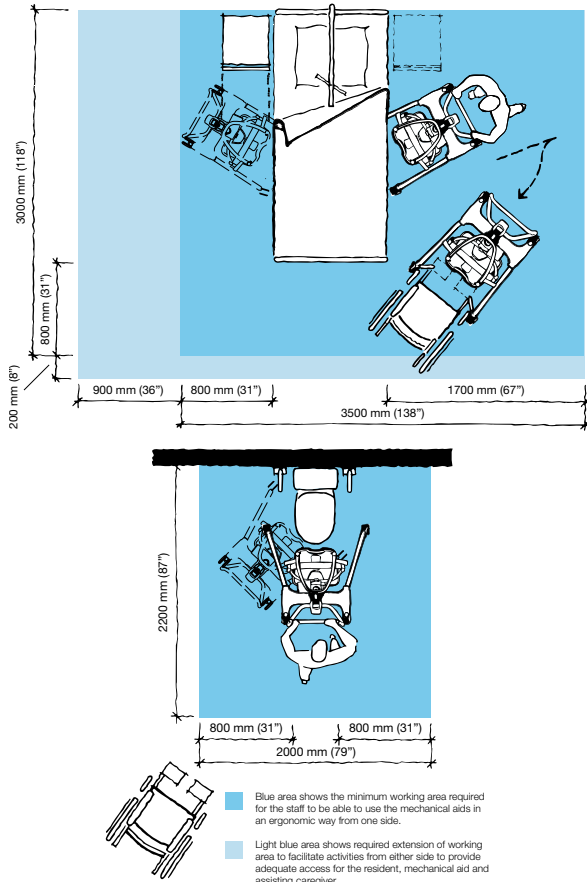


Designed to Make
Everyday Transfer
Tasks **Easier**



Product specifications

Space requirements



Mobility gallery

Suitable for Carl



C Carl, who sits in a wheelchair and has little capacity to support himself

Please contact ArjoHuntleigh for further information on the Mobility Gallery™.

Product Information

Max safe working load	440 lbs/200 kg
Weighing capacity	440 lbs/200 kg
Weight	1,145 lbs/52 kg
Weight with scale	118 lbs/53.6 kg
Total length	39 1/4"/996 mm
Min lifting height	39"/991 mm
Max lifting height	59 3/4"/1518 mm
Total height	45 3/4"/1162 mm
Height of chassis	100.5 mm
External width legs closed	26"/660 mm
External width legs open	40 1/2"/1029 mm
Battery	24V DC 4Ah
Lifter protection class	IP24
Hand control protection class	IPX7
Low friction casters, the rear two with brakes	
Battery Discharge Indicator (BDI) – displays remaining power and indicates when the battery needs charging	
Service meter – displays the total motor usage time	
Emergency stop and system failure override	

Option

Integrated scale

Approvals

EN/IEC 60601-1 (TÜV SÜD)

EN ISO 10535:2006 (TÜV SÜD)

Only ArjoHuntleigh designed parts, which are designed specifically for the purpose, should be used on the equipment and products supplied by ArjoHuntleigh. As our policy is one of continuous development we reserve the right to modify designs and specifications without prior notice.

ARJOHUNTLEIGH
GETINGE GROUP

ArjoHuntleigh Inc.
2349 West Lake Street, Addison, Illinois 60101

www.arjohuntleigh.com

ArjoHuntleigh is a world-leading provider of integrated products and solutions that improve the lives of patients and residents with reduced mobility. We help healthcare facilities deliver wellness and effective everyday care, early mobilization, safe patient handling, venous thromboembolism prevention, pressure injury prevention, hygiene routines, bariatric care and diagnostics. With extensive knowledge and experience, we strive to improve efficiency and ensure a safer and dignified environment for caregivers and their patients.

Sara Flex Standing and Raising Aid
Details that **Make a Difference**

ARJOHUNTLEIGH
GETINGE GROUP



Sara Flex

Caring is Attention to Detail

At ArjoHuntleigh, 60 years of experience have taught us that details are everything. They are the difference between comfort and pain, a calm patient or a frightened patient, a caregiver that can work efficiently or a caregiver always trying to catch up. When moving a patient from a sitting to a standing position, details make all the difference.

Designed to make everyday transfer and care tasks easier, Sara® Flex from ArjoHuntleigh equips one caregiver with the ability to position a patient from a seated to a safe, secure and comfortable standing position, in one ergonomic movement.

It's the details that make every following transfer, whether it be to a wheelchair, the toilet, a shower chair or early mobilization following surgery, a positive experience

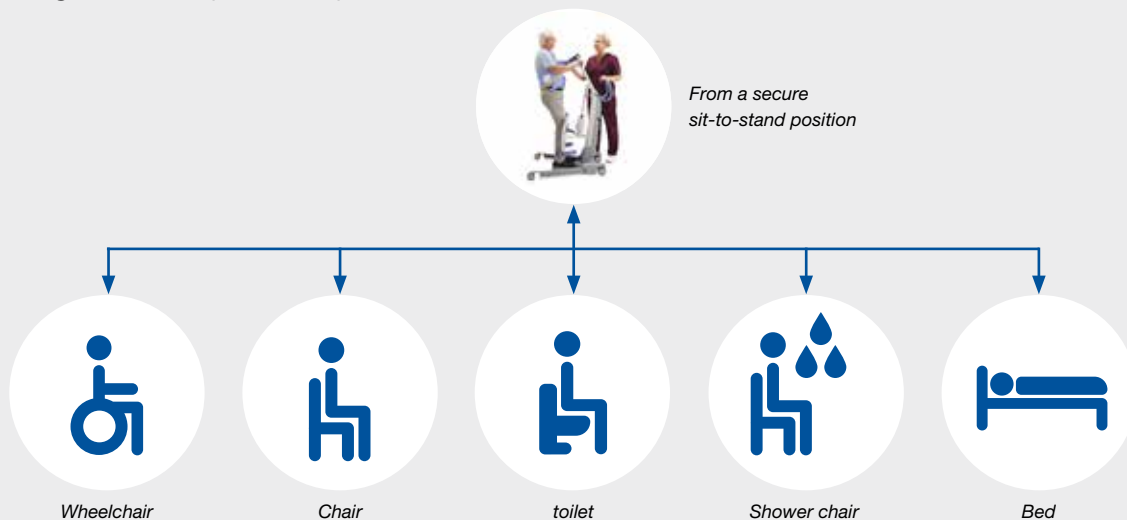
Carl mobility spectrum



Sara Flex is specifically designed for patients and residents that are unable to mobilize without assistance, but who are able to contribute to the action or perform part of the action independently. Please contact ArjoHuntleigh for further information regarding the Mobility Gallery™

Facilitating essential daily transfer and care tasks

All starting from an optimized position



Optimized patient support

- Promotes comfort and security throughout and at the completion of the sit-to-stand movement

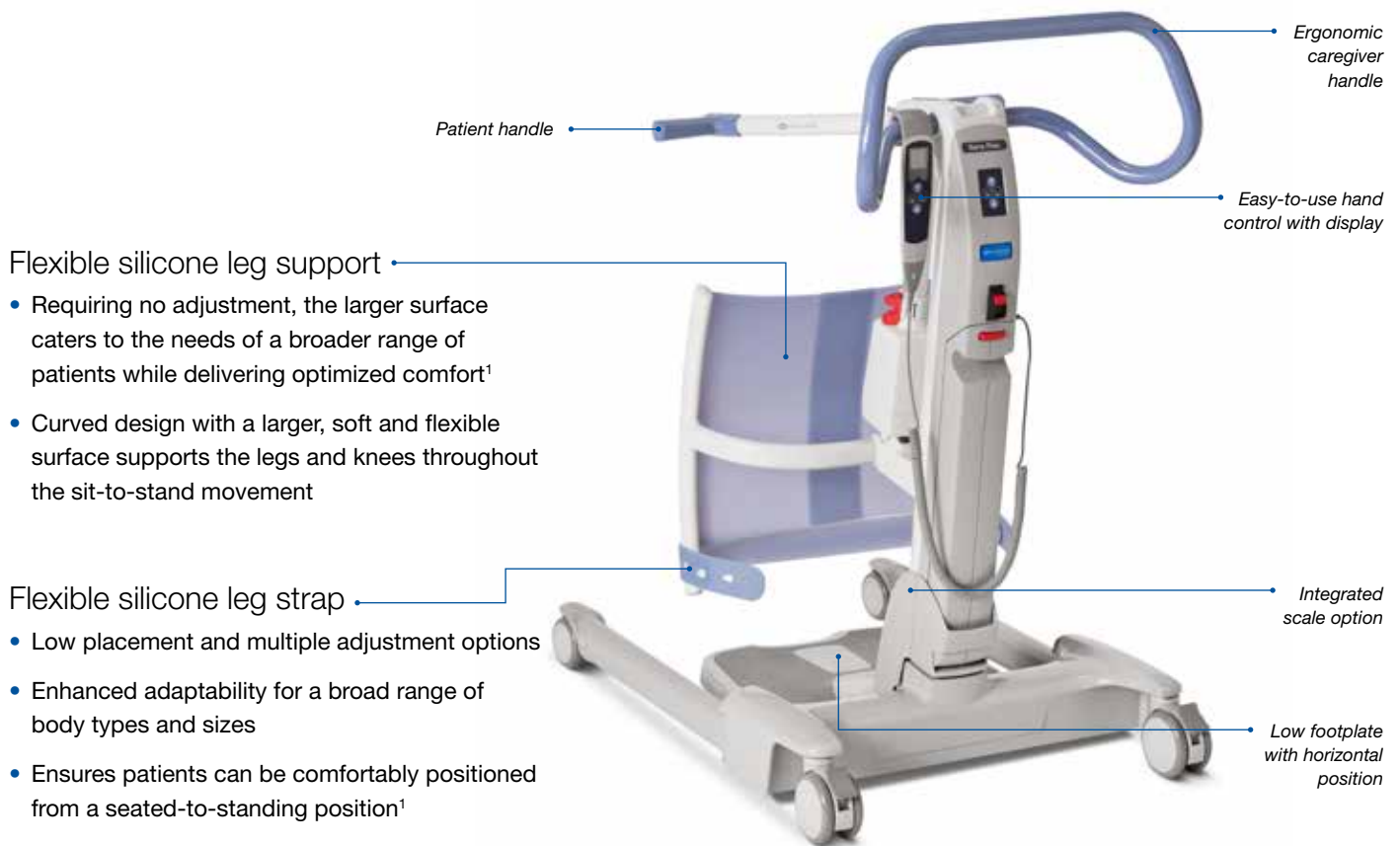
Easy to use with enhanced maneuverability

- Delivers enhanced maneuverability and requires no adjustment, ensuring ease of use

Comprehensive patient coverage

- Enables one caregiver to perform sit-to-stand tasks for a wide range of patients within the Carl mobility spectrum





Flexible silicone leg support

- Requiring no adjustment, the larger surface caters to the needs of a broader range of patients while delivering optimized comfort¹
- Curved design with a larger, soft and flexible surface supports the legs and knees throughout the sit-to-stand movement

Flexible silicone leg strap

- Low placement and multiple adjustment options
- Enhanced adaptability for a broad range of body types and sizes
- Ensures patients can be comfortably positioned from a seated-to-standing position¹

Ergonomic forward movement

- Forward movement, in combination with the flexible leg support, enables an ergonomic and comfortable sit-to-stand movement¹

Small and light

- Keeps Sara Flex at an optimal size that is non-intrusive and suited to the needs of patients that may otherwise be intimidated by bulky or cumbersome handling equipment
- Designed with aesthetic appeal in mind, ensuring vulnerable patients remain calm during the sit-to-stand transfer

Low footplate with horizontal position

- Facilitates an ergonomic sit-to-stand movement that is specifically designed to feel smooth and natural for the patient²
- Enables easy foot placement while supporting and enhancing the sit-to-stand movement

Easy-to-use hand control with display

- Ensures the sit-to-stand task is quick, minimally exertive and hassle-free
- Ensures caregivers can work closely with their patient and intuitively read weight or maneuver the lift

Patient handle

- Easy-to-grasp and angled patient handle helps ensure comfortable positioning of hands, wrists and elbows throughout the sit-to-stand movement

Caregiver handle

- Flexible grip with intuitive ergonomic efficiency