



This manual has been prepared for the owners and operators of the ARMEDICA™ AM-SX Series Hi-Lo Treatment Tables, and contains installation instructions, precautionary instructions and maintenance procedures for the following model numbers:

**AM-SX1000, AM-SX1060, AM-SX1072,
AM-SX2000, AM-SX3000, AM-SX3500,
AM-SX4000, AM-SX4500,
AM-SX5000, AM-SX5400**



ISO 13485
FM 50089

Made in the U.S.A

AM-SX SERIES HI-LO TREATMENT TABLES

INSTALLATION

1. Remove all packaging material from the table.
2. There is no assembly required on the ARMEDICA™ AM-SX Series Treatment Tables.
3. Plug the power cord into a properly grounded 120 Volt AC outlet and follow the procedure outlined in the Precautionary Instructions.
4. The tables are equipped with 4-total lock swivel casters for maximum stability.
5. The motors are equipped with a thermal cutout that protects them from overheating.

PRECAUTIONARY INSTRUCTIONS

1. Read, understand and practice the precautionary instructions in this manual. Be aware of the limitations and the hazards associated with the ARMEDICA™ Treatment Tables.
2. The motor is double insulated for protection from EMI. This equipment has been tested and found to comply with the limits for medical devices to the IEC 60601-1-2: Third edition 2007-03. These limits are designed to provide reasonable protection against harmful interference in a typical medical installation. This equipment generates, uses and can radiate radio frequency energy and, if not installed and used in accordance with the instructions, may cause harmful interference to other devices in the vicinity. However, there is no guarantee that interference will not occur in a particular installation. If this equipment does cause harmful interference to other devices, which can be determined by turning the equipment off and on, the user is encouraged to try to correct the interference by one or more of the following measures:
 - Reorient or relocate the receiving device.
 - Increase the separation between the equipment.
 - Connect the equipment into an outlet on a circuit different from that to which the other device(s) are connected.
 - Consult the manufacturer or field service technician for assistance.
3. Always make certain all 4 casters are locked prior to patient use.
4. Always use both hands when changing the angle of any section of the table.
5. Never change the angle of any section, except motorized sections, when the patient's weight is on that section.
6. Never place your hands or feet nor the patient's hands or feet near any of the working mechanisms of the table when raising or lowering the table.
7. **Never leave patient unattended.**

OPERATING INSTRUCTIONS

To adjust the height of the ARMEDICA™ Treatment Tables, a low voltage foot switch or hand switch is used to activate the electric motor assembly. The up and down activators are clearly indicated by decals.

Duty cycle on/off Int. 1 min./ 9 min.

TABLE SECTION ADJUSTMENTS

The sections of the ARMEDICA™ Treatment Tables are raised by lifting them with both hands. The locking mechanism holds them securely at any angle. To lower a section, hold it in one hand and release the locking mechanism by rotating the lever with the other.

The AM-SX 4000 is equipped with an automatic spring return.

CAUTION: When lowering any of the table sections, make certain that your hands cannot come in contact with the board supports.

CAUTION: When adjusting the non-motorized sections with the patient on the table, be sure that the patient's weight is not on the section you are going to adjust.

CAUTION: To adjust the arm rest on the 3-piece head section loosen knob while holding arm rest. Raise or lower the arm rest to the desired position and tighten knob.

CAUTION: Make sure that each armrest on the 3-piece head section is locked securely in position before the patient places any weight on it.

CAUTION: When locking the rolling section of the AM-SX 4000 in position, make sure the lock plunger is fully engaged in one of the slots.

MAINTENANCE

The ARMEDICA™ AM-SX Series Treatment Tables are equipped with a maintenance free electric motor. The moving parts of the table should have a drop of oil placed on them approximately every six months.

When lubricating the slide block track use a food grade grease.

Frequently check to make certain that all hardware (nuts, bolts, etc.) are properly adjusted and securely fastened.

In the event it becomes necessary to replace the foot switch, hand switch or the power cord, make certain that the plug is properly installed and the locking tabs on the motor snaps in place.

The vinyl cover should be cleaned with mild soap and water and the table frame wiped with a dry cloth to remove dust and lint when necessary.

SYMBOLS AND INDICATORS



Attention: Consult accompanying documents.



Type B Equipment: "An adequate degree of protection against electric shock is provided, particularly regarding leakage currents and reliability of the protective earth connection."



The grounding pin located on the power supply cable is for functional use only, and is present for EMI/ EMC purposes. The motor is Class II equipment and does not rely on this grounding means for safety.

TROUBLESHOOTING

MOTOR DOESN'T WORK.

- A. Check to see if motor is plugged into electrical outlet, and the power cord is properly plugged into the motor.
- B. Make sure the electrical outlet has power.
- C. Check hand switch or foot switch to be sure it is plugged in correctly.
- D. Thermal cutout may have activated. Allow the motor to cool.
- E. In the event there is a failure of the motor, the motor must be returned to Armedica Mfg. Corp. The motor must be serviced by the manufacturer. Contact Armedica Mfg. Corp. prior to returning any parts or products to obtain return authorization.

MOTOR SPECIFICATIONS

Magnetic Corp., Olney, Illinois 62450
Model MAX 65-A200415A1001-000.
Model MAX 63-A200415A0100-000.
Rated Voltage and Frequency 120V 60HZ.
Current 1.8 Amps.
UL CORD SET 140-355
Duty cycle: on/off Int. 1 min. / 9 min.

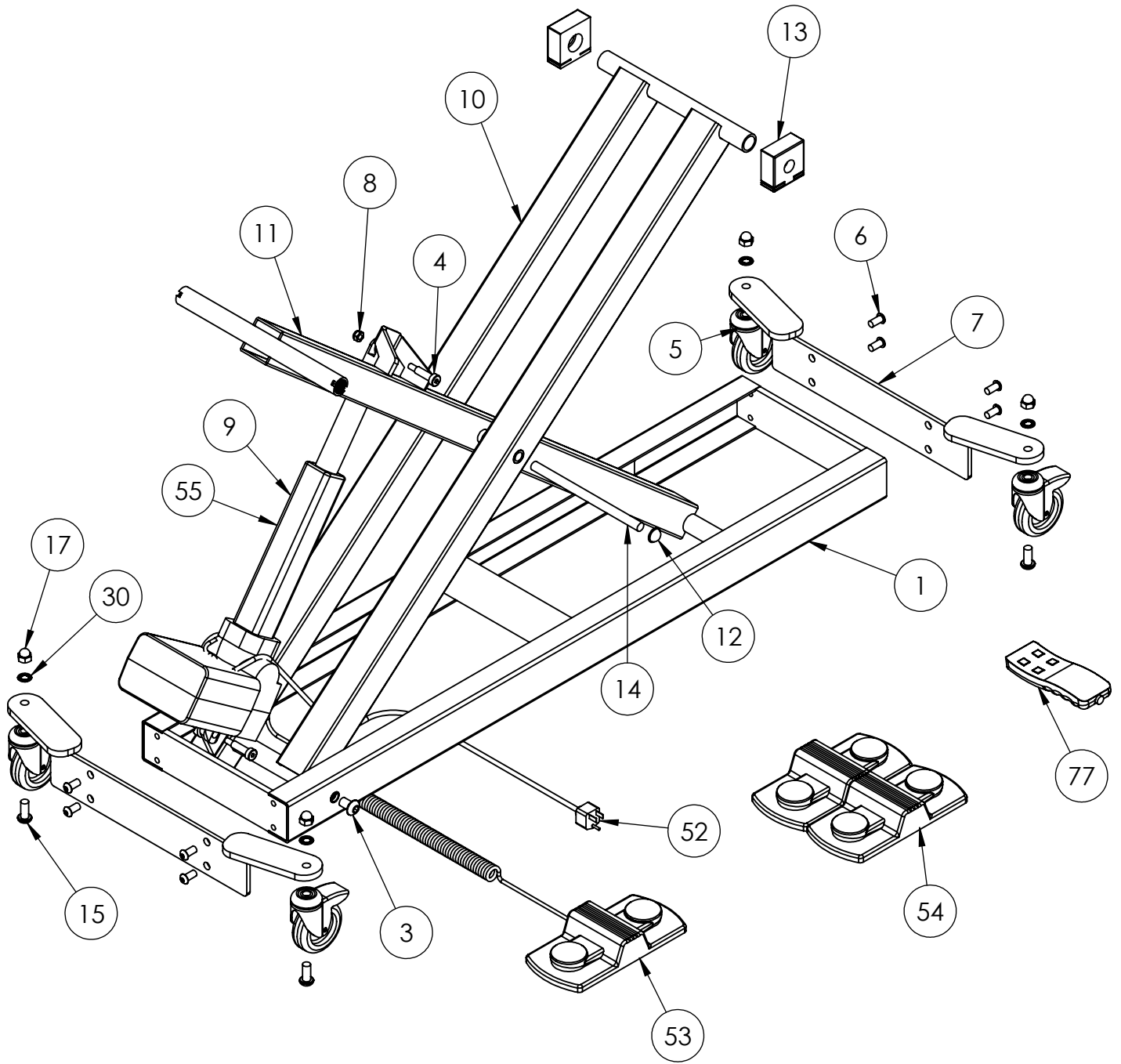
Lumbar section (AM-SX3000 & AM-SX5000 models)

Magnetic Corp., Olney, Illinois 62450
Model MAX 30-B050265A10M0-000
Rated Voltage and Frequency 120V 60HZ
Current 1.8 Amps.
Duty cycle: on/off Int. 1 min. / 9 min.

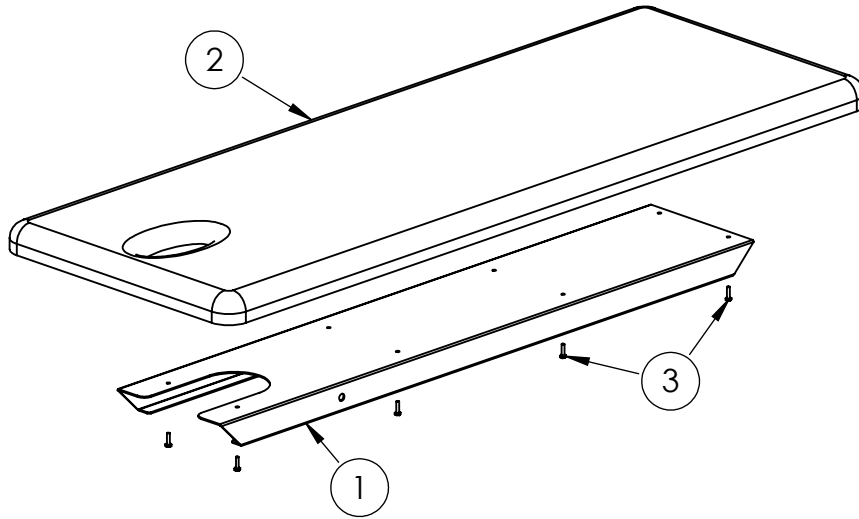
PARTS LIST								
ITEM NO.	PART NO.	DESCRIPTION	QUANTITY					
			1000	1060	2000	3000	3500	4000
				1072		5000	5400	4500
1	18856	SX BASE FRAME	1		1	1	1	1
2	13879	BRONZE BUSHING .630OD x .65Wx.1875	4	4	4	4	4	4
3	02198	BUTTON HEAD SOCKET SCREW 1/2-13X3/4	4	4	4	4	4	4
4	02012	SHOULDER BOLT M10X30	2	2	2	4	2	2
5	03072	CASTER SWIVEL LOCK TENTE	4	4	4	4	4	4
6	02176	BUTTON HEAD SOCKET SCREW 3/8-16X3/4	8	8	8	8	8	4
7	18862	SX CASTER LEG ASSEMBLY W/HOLES	2	2	2	2	2	2
8	02092	NUT NYLOCK M8-1.25	2	2	2	4	2	2
9	03153	MOTOR MAX63 8000N (SX 3000 ONLY)				1		
10	18858	DUAL LIFTING ARM	1	1	1	1	1	1
11	18892	SINGLE LIFTING ARM	1	1	1	1	1	1
12	02196	CAP NUT 1/2"	2	2	4	8	6	6
13	02340	SX PLASTIC SLIDE BLOCK	4	4	4	6	4	4
14	13855	SX PIVOT ROD 1/2x9	1	1	1	1	1	1
15	02665	SCREW BTN HD SOC 7/16-14x1	4	4	4	4	4	4
16	02553	PLASTIC FLANGE BUSHING .687ODx.510 ID			2	4	4	4
17	02664	NUT ACORN 7/16-14 NICKEL PLATED	4	4	4	4	4	4
18	14823	UPHOLSTERED BOARD 27x76 W/FACE HOLE	1					
19	02312	TOP FRAME SX 1000	1					
20	02042	BUTTON HEAD SOCKET SCREW 1/4 20x1/2						1
21	14826	UPHOLSTERED BODY BOARD SX 2000			1			
22	14835	UPHOLSTERED HEAD BOARD SX SERIES			1	1	1	1
23	02307	FRAME SX 3 PC HD SEC PNTD					1	1
24	13877	ROD SX 1/2x13.25 HEAD SECTION PIVOT			1	1	1	1
25	02165	WASHER NYLON 1/2 ID			2	2	2	3
26	13867	ROD SX 1/2x15-1/8 HEAD PIVOT			1	1	1	1
27	18877	ROD SX 1/2"RDx8 HEAD SECTION SUPPORT			2	2	2	2
28	02329	SX PLASTIC RELEASE HANDLE			2	4	4	4
29	02543	PIN SPRING 3/16x1-1/2			2	4	4	4
30	02663	WASHER LOC 7/16" INTERNAL TOOTH PLT	4	4	4	4	4	4
31	18854	SX HANDLE LOCK BAR BENT			2	4	4	4
32	13865	TUBE 3/4x6 LOCK SLEEVE			1	2	2	2
33	02534	PIN SPRING 3/16x3/4			2	4	4	4
34	02045	HEX HEAD CAP SCREW 1/4-20x1	8	14	12	18	20	22
35	02310	TOP FRAME SX 2000			1		1	
36	14836	UPHOLSTERED CENTER BOARD SX 3000				1		
37	14837	UPHOLSTERED FOOT BOARD SX 3000				1		
38	18866	SX 3000 CENTER FRAME				1		
39	18869	SX 3000 FOOT FRAME				1		
40	14711	UPHOLSTERED CENTER BOARD SX 3500					1	
41	14713	UPHOLSTERED FOOT BOARD SX 3500					1	
42	02327	HINGE BENT 2.5x4					2	2
43	02503	RETAINER RING 1/2 EXTERNAL				2	2	6
44	13875	BAR HEX ROLLER LOCK RELEASE						1
45	03154	MOTOR MAX30 4000Nx50MM (SX 3000 ONLY)				1		
46	18900	CENTER ARM SX 3000				1		
47	02037	BUTTON HEAD SOCKET SCREW 1/4-20x1		4		4	4	4
48	13871	SX FOOT SUPPORT ROD W/BEND				2	2	2
49	13884	SX 3000 TOP PIVOT ROD 1/2x20-1/4				1		
50	02325	HINGE SX FOOT SUPPORT ROD PIVOT				2	2	2
51	18902	HINGE SX 3000 FOOT BOARD				2		
52	03107	POWER CORD MAX65 MOTOR 8000N	1	1	1	1	1	1
53	03106	FOOT SWITCH MAX65 8000N	1	1	1		1	1
54	03155	FOOT SWITCH MAX63				1		
55	03105	MOTOR MAX65 8000N 120V	1	1	1		1	1
56	14840	UPHOLSTERED THORACIC BOARD SX 4000						1
57	02318	TOP FRAME SX 4000						1
58	18851	ROLLER FRAME SX 4000						1
59	14841	UPHOLSTERED LUMBAR BOARD SX 4000						1
60	14842	UPHOLSTERED FOOT BOARD SX 4000						1
61	02332	ANGLE SX ROLLER FRAME LOCK MOUNT						1
62	12743	BAR SX 1/8x1.5x7-5/8 TX ELBOW						2
63	02330	WHEEL SX TRACTION ROLLER FRAME						4
64	03084	NUT ROUND FLANGED 1/4-20x7/8 BARREL						2
65	02120	NUT HEX FIN 1/4-20						4
66	02100	NUT NYLOCK 1/4-20						11

PARTS LIST								
ITEM NO.	PART NO.	DESCRIPTION	QUANTITY					
			1000	1060	2000	3000	3500	4000
				1072		5000	5400	4500
67	02501	SCREW PAN HEAD PHIL 10-32x1/2						4
68	02073	SCREW FLAT HEAD PHIL 1/4-20x1-1/2						2
69	03027	SPRING EXTENSION						2
70	03029	ROLLER FRAME LOCK						1
71	13869	ROD SX 1/2x14.563 TX ROLLER AXLE						2
72	02089	NUT NYLOCK 10-32						2
73	02185	SCREW FLAT HEAD PHIL 1/4-20x2						2
74	02060	SCREW FLAT HEAD PHIL 1/4-20x1/2						6
75	13912	TUBE RD 3/4x.120Wx9-15/16 SX 3PC HD				1	1	1
76	13910	BAR RD 1/2x11-13/16 SX 3PC HD				1	1	1
77	03113	HAND SWITCH MAX65 (OPTIONAL)	1	1	1		1	1
78	18883	SX 4000 MACHINE STAND					1	1
79	02050	HEX HEAD CAP SCREW 5/16-18x1-3/4						2
80	14508	ADAPTER BOARD						1
81	02090	NUT NYLOCK 1/2-13						1
82	03015	PLUG 1x2x14GA						2
83	03125	KNOB "T" SPRNG LOAD PULL PIN 1/4DIA						1
84	03008	PLUG 1x1-1/2						4
85	02162	SPACER PLASTIC .33 IDx.565 ODx.56				2		4
86	12751	SX 4000 STAND LOCK PLATE						1
87	28038	BRKT MACH STND MNT SX PNTD						1
88	03040	TORSION SPRING LESS BEND LEFT			1	2	2	2
89	03030	TORSION SPRING LESS BEND RIGHT			1	2	2	2
90	02508	BUTTON HEAD SOCKET SCREW 3/8-16X1						4
91	02555	LOCK COLLAR 1/2 ID			2	2	2	2
92	14769	UPHOLSTERED HEAD CRESCENT HD					1	
93	14767	UPHOLSTERED ARMREST CRESCENT HD					1	
94	18906	HEAD FRAME CRESCENT HD					1	
95	18898	LOCK SUPPORT CRESCENT HD					1	
96	18896	LOCK BRACKET TUBE CRESCENT HD					1	
97	02140	WASHER 1/4						4
98	14773	BD UPH SX 3 SEC HD				1		1
99	14774	BD UPH SX 3 SEC ARM				1		1
100	18783	FRAME ARM REST SUPPT PLTD				1		1
101	18779	BRKT ARM REST RIGHT PNTD				1		1
102	03075	KNOB W/STEM 1/4-20x1/2					2	
103	03167	KNOB 5/16-18 1/2" L BLACK 1 3/4"				2		2
104	02509	SET SCREW CONE POINT 1/4-20X1/2				4		
105	18787	BRKT LOCK SX 3PC HD SUPPT PLTD				2		2
106	18781	BRKT ARM REST LEFT PNTD				1		1
107	02105	NYLOCK NUT 5/16-18				2		4
108	13881	HANDLE SX LOCK ROD 1/2x11-13/16x60DEG					2	
109	12461	ROD 1/2x7-1/8					1	
110	03010	PLUG 1x1x14GA				4		4
111	02036	BUTTON HEAD SOCKET SCREW 1/4 20X3/8		2		2	2	2
112	02339	SX LOCK TAB				2	2	2
113	13908	BAR RD 1/2x12 SX 3PC HD PLTD				1		1
114	02078	SCREW PAN HD PHIL 10-32x3/8				2		2
115	18991	FRAME SX SIDE RAIL LEFT PNTRD		1				
116	18993	FRAME SX SIDE RAIL RIGHT PNTD		1				
117	18995	BRKT SIDE RAIL PIVOT MOUNT LR PNTD		1				
118	18980	BRKT SIDE RAIL PIVOT MOUNT RR PNTD		1				
119	02261	FRM SX CHANGING TABLE TOP PNTD		1				
120	14853	BD UPH SX CHANGING TABLE 25x60		1				
121	18998	BRKT SIDE RAIL PIVOT LOCK MNT LF PNTD		1				
122	18982	BRKT SIDE RAIL PIVOT LOCK MNT RF PNTD		1				
123	14859	BD UPH SX CHNG TBL SIDE RAIL		2				
124	14869	BD UPH SX CHNG TBL 25x72		1				
125	02104	WASHER 1/4" INTERNAL TOOTH LOCK		4				
126	02657	PLUG RD 1"ODx14-20 GA BLK		4				
127	02190	WASHER FENDER 1/4IDx1-1/4OD		2				
128	18879	ROD SXDT THD'D FT LOCK BAR PLTD		2				
129	02063	SCREW HX WASHER HD #10x3/4		8				
130	02135	NUT HX FIN JAM 1/2-13		2				
131	02111	NUT HX FIN JAM 5/16-18		2				
132	03070	KNOB WING 1/2X13 ID		2				

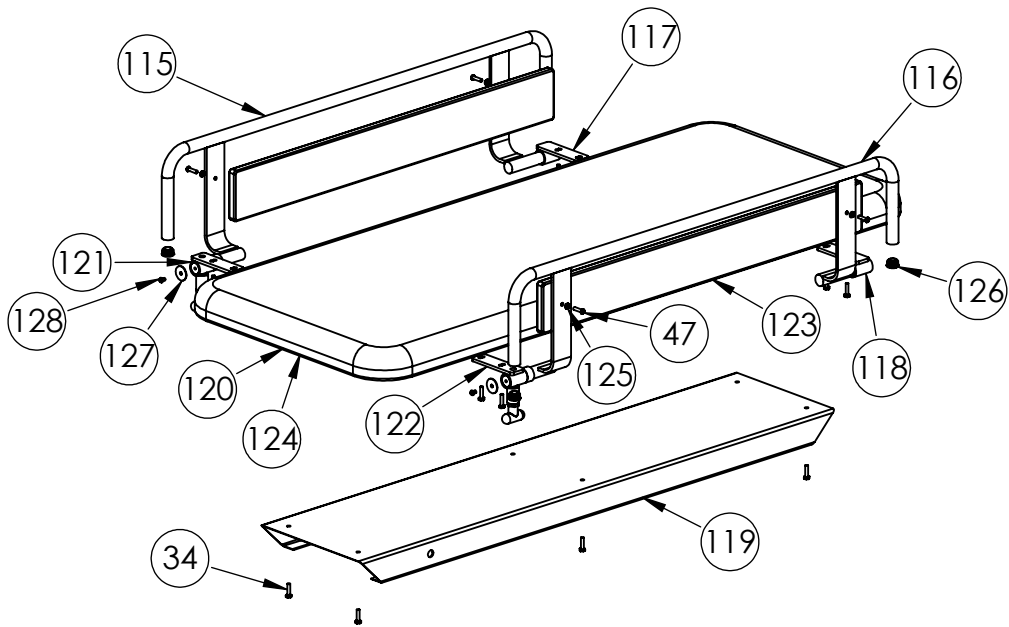
SX BASE



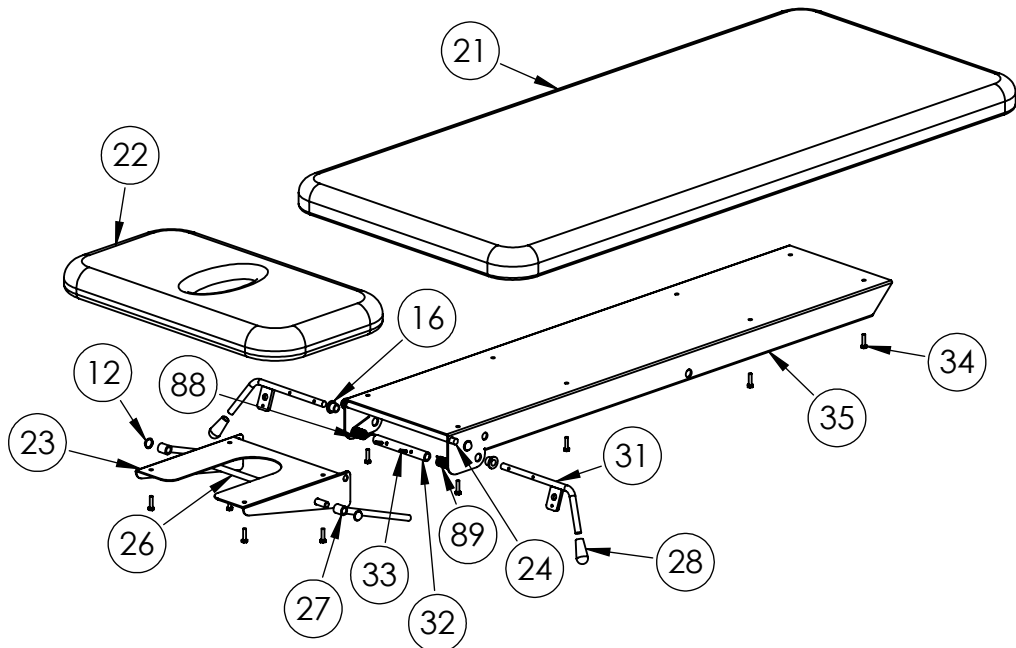
AM-SX1000



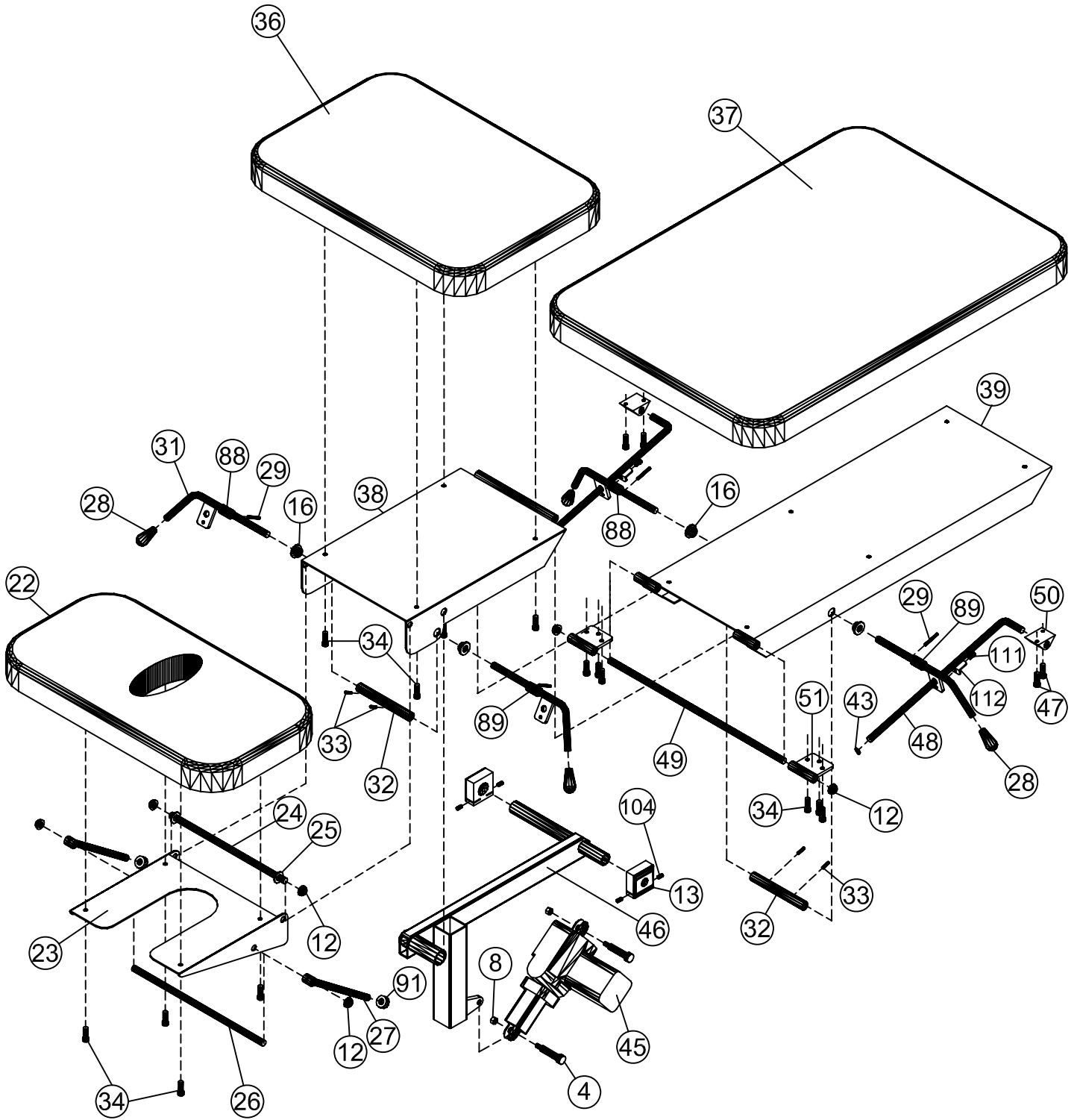
AM-SX1060 AM-SX1072



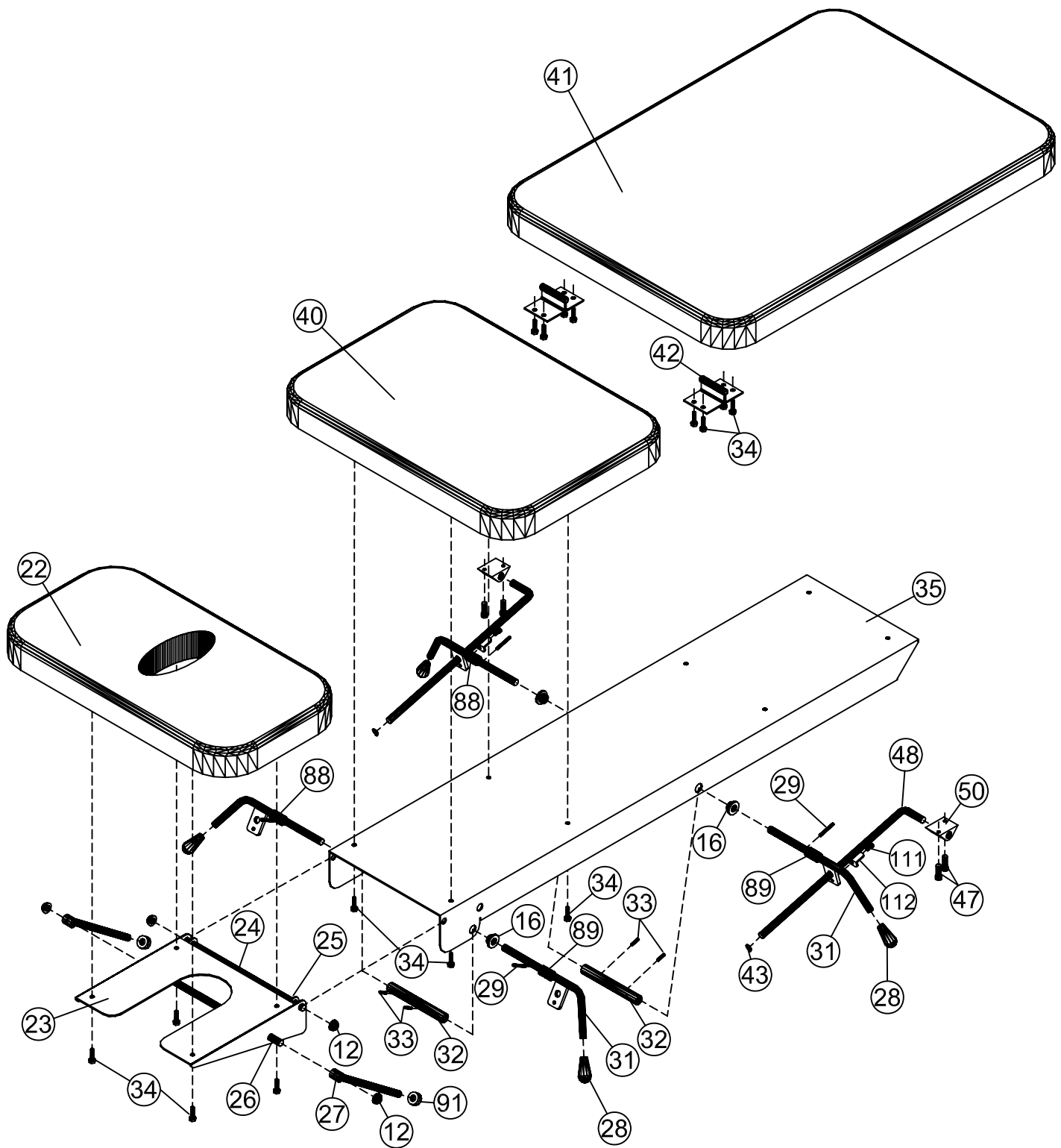
AM-SX2000



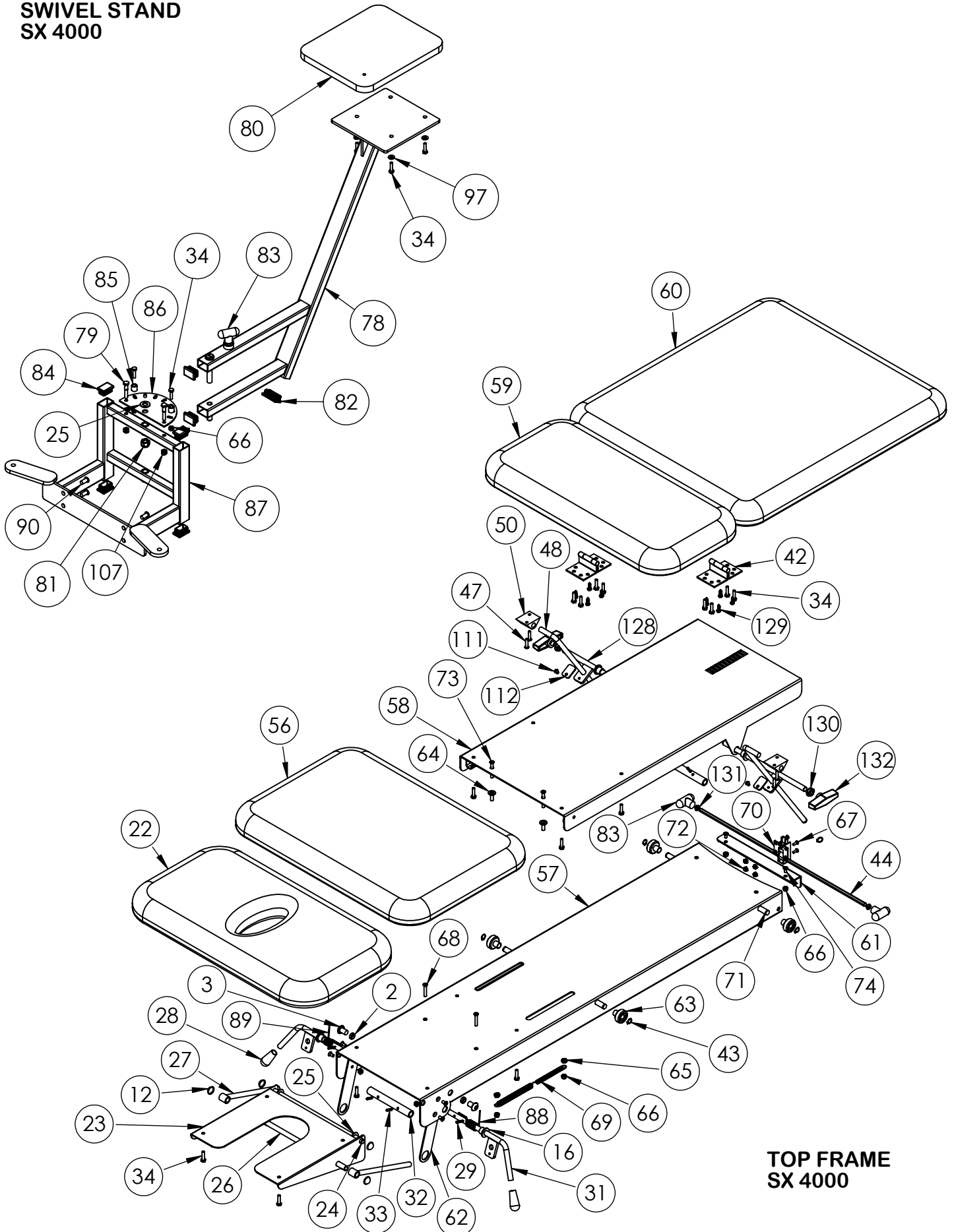
TOP FRAME
SX 3000



TOP FRAME
SX 3500

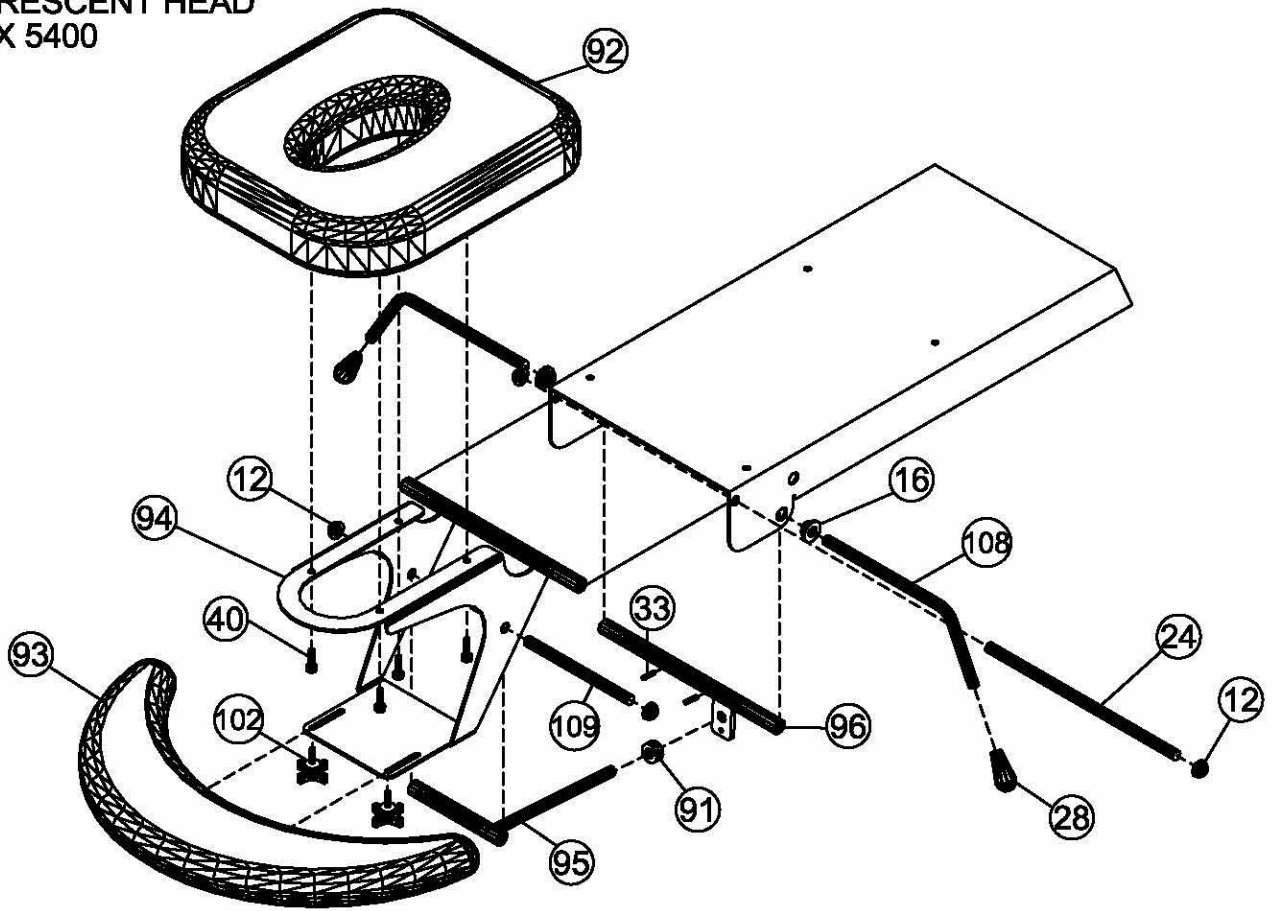


**SWIVEL STAND
SX 4000**



**TOP FRAME
SX 4000**

**CRESCENT HEAD
SX 5400**



THREE PIECE HEAD

