



# heron<sup>TM</sup>

The Heron is one of the most extraordinary toilet and bathing seat on the market. The simple design and clean appearance conceal multiple functionality features that improve both the user and carer experience.



The Heron sets new standards for users with special needs for positioning. The seat is ergonomically correct, meaning it can be tilted and the back reclined without compromise for the user. Clever design means that during recline, the anatomical pivot point at the axis of the hips is maintained. This provides the user more comfort when seated.

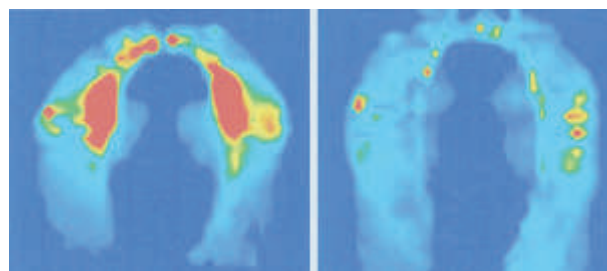
The Heron can be used freestanding with a pan, directly over the toilet or as a bathing chair in the shower. The smooth height, tilt and recline functions ensure optimum working conditions for the carer. To maintain safety, the Heron is equipped with four lockable casters.

The Heron is delivered with a narrow backrest for freedom of movement. For added support and comfort, swing-away side supports or upholstered sides which support the shoulders, can be added. The Heron comes in one size.



### Easy adaptation of working conditions

The hydraulic height adjustment allows the Heron to adjust from 51 to 78 cm in height. Height adjustability eases transfer from/to the chair and provides optimum working conditions for the carer



### Comfortable seating

Pressure mapping has been used in the design of Heron to minimise pressure and improve comfort for users even when the seat is used for extended periods of time



### Optimum positioning

The Heron has easily accessible handles for the tilt-in-space and back recline functions which allows for optimum and stable positioning possibilities. The seat angles from  $-5^{\circ}$  to  $25^{\circ}$  and the back from  $0^{\circ}$  to  $30^{\circ}$



### Fully supported while seated

Heron can be adapted to provide targeted postural support for the user whether minimal intervention or full support is required. Head support, multi adjustable hip supports, swing-away side supports, arm rests and tray are included in the comprehensive range of accessories



## Size

880505-01

The Heron is available in one size



## Easily accessible handles

The easily accessible and ergonomically designed handles provide tilt-in-space and back recline functions



Unlocked



Locked

## Smooth-running castors

Large castors improve the manoeuvrability and handling of the Heron, especially on a tiled bathroom floor. All castors have brakes for safety and stable transfer



Unlocked



Locked

## Soft and shaped upholstery

Heron's upholstery has been selected to improve comfort through temperature compensation and minimising pressure



## Myriad possibilities

The Heron can be used over a toilet, freestanding with a pan, as a bathing chair in the shower and reclined over the bath tub for e.g. shampooing



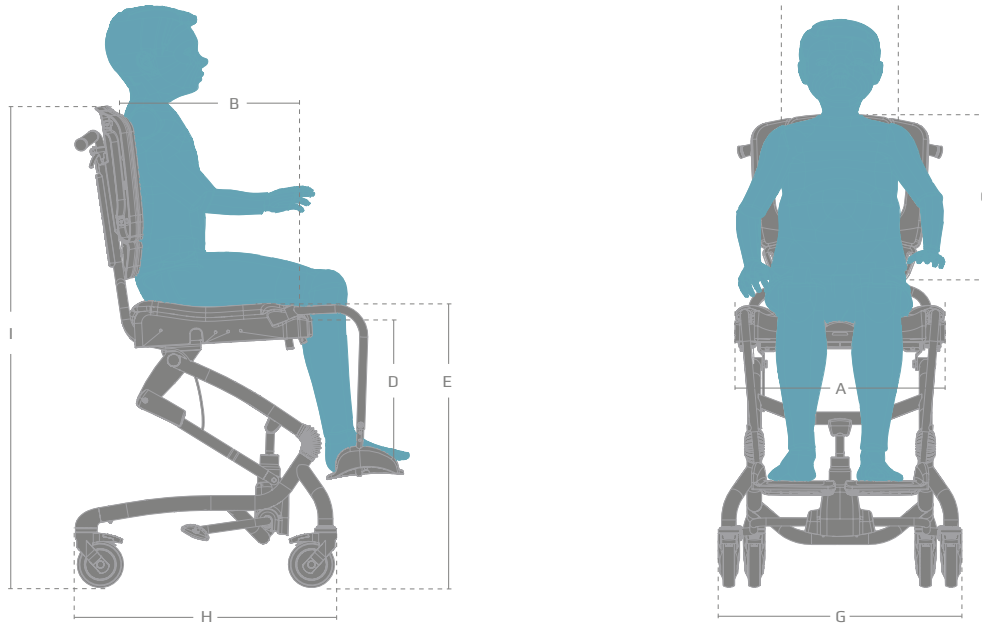
Over a toilet with a potty ring (standard)



Freestanding with a pan (accessory)



Bathing chair



## Measurements

	One size
Seat width (A)	55 cm (21½")
Seat width with hip supports (accessories)	35 - 49 cm (13½" - 19")
Seat depth (B)	45 cm (17½")
Back width (F)	29 cm (11¼")
Back height (C)	55 - 62 cm (21½" - 24¼")
Seat height above floor (E)	51 - 78 cm (20" - 30½")
Width, frame (G)	67 cm (26")
Length, frame (H)	71 cm (27¾")
Height frame w/seat (I)	108 - 135 cm (42" - 52½")
Seat angling (tilt in space)	-5° -> 25° (-5° -> 25°)
Back angling	0° -> 30° (0° -> 30°)
Weight	28 kg (61.5 lb)
Max load	100 kg (220 lb)



## ACCESSORIES



### Head support

To manage alignment and support the head in a tilted position

See the Accessories section at the back of the catalogue, for further information on options and measurements



### Shoulder supports

880508-01  
Provide stability for the shoulder girdle and moderate control of trunk position

size	measurements
one	W:10 x H:36 cm
48 cm	Back width, top



### Upholstery for shoulder supports

880507-04  
For added comfort

size	measurements
one	W:10 x H:36 cm



### Side supports, swing-away

83xxx-xxx Provide precise positioning of the trunk

See the Accessories section at the back of the catalogue, for further information on options and measurements



### Arm rests

880508-03  
Arm rests may help in repositioning or transfer

size	measurements
one	W:5 x L:37 x H:25 cm
H	height above seat



### Tray

880508-04 A tray may be used to support a more natural toileting position for a user with poor upper trunk or head control

size	measurements
one	W:44 x D:19 cm



### Hip supports

880508-02  
For pelvic support and adjustment of seat width

size	measurements
one	W:21 x H:10 cm
Seat width	35 - 49 cm



### Commode pan

880130  
The commode pan makes it possible to use Heron as a stand-alone toilet seat

size	measurements
one	W:20 x D:34 x H:12½ cm



### Splash guard

880508-05  
Ideal for maintaining alignment of the legs or managing adduction, in addition to its self explanatory function

size	measurements
one	W:8 x H:13½ cm



### Upholstery

880507-01, complete set  
880507-02, back  
880507-03, seat

One size



### Vests & belts

For correct positioning and support

See the Accessories section at the back of the catalogue, for further information on options and measurements



### Foot supports, right-angled knee

880506-01  
For leg positioning

One size  
Lower leg length 36 - 46 cm

## ACCESSORIES



### Foot supports, open knee angle

880506-02

For leg positioning

#### One size

Lower leg length 36 - 46 cm



### Padding for foot supports

880506-12 Knee protection for users sitting in abduction or at risk of harm from collision with the frame when extending

#### one size



### Calf support

880509-01

Support for the lower legs

#### size measurements

one H: 10 cm  
H strap height



### Heel stops

880509-02

For correct positioning of the feet

#### size measurements

one H: 4 cm - H1: 5 cm  
H = strap height  
H1 = height above footplate

