



---

TILT, RECLINE, AND SEAT HEIGHT ADJUSTMENT-  
REHAB SHOWER/COMMODE CHAIR

---

- Complete Packages for Easier Ordering Available
- Stainless Steel Frame
- Tilt, Recline and Seat Height Adjustment
- Several Seat Options Available
- 350 lb. (158kg) Weight Capacity
- Seven Seat and Frame Sizes: 16" Wx18"D, 18" Wx18"D, 18" Wx20"D, 20" Wx18"D, 20" Wx20"D, 22" Wx18"D and 22" Wx20"D

This tilt-in-space shower/commode chair with stainless steel frame comes with an optional reclining back and tool-free, 4-way seat. The combination of tilt-in-space and recline easily accommodates complex positioning needs.

Multiple features combine to provide support, comfort, and pressure relief, along with the other benefits of tilt-in-space technology. The chair height adjustment allows for over toilet use or can be used with a commode pan, making this chair a versatile answer for home or institutional use.

FRAMES



**P13762**  
16"Wx18"D  
Stainless Steel  
Frame



**P13763**  
18"Wx18"D  
Stainless Steel  
Frame



**P13764**  
18"Wx20"D  
Stainless Steel  
Frame



**P13765**  
20"Wx18"D  
Stainless Steel  
Frame



**P13766**  
20"Wx20"D  
Stainless Steel  
Frame



**P13767**  
22"Wx18"D  
Stainless Steel  
Frame



**P13768**  
22"Wx20"D  
Stainless Steel  
Frame

FRAME POSITIONING



**P13759**  
Tilt



**P13760**  
Recline



**P13761**  
Tilt/Recline

CASTERS



**P60800-4**  
5" Dual Locking  
Casters  
(2 pair)



**P13770**  
5" Casters (pair) and  
5" Dual Locking  
Casters (pair)

SEATS

\*Seat works in all 4 positions



**P61124**  
16"Wx18"D  
Ensolite® 1" foam  
Front Open Seat  
A-4.75"xB-7.75" opening



**P60993\***  
18"Wx18"D  
Comfortuff 1.5" waterfall foam  
Front/Rear Open Seat  
A-5"xB-8" opening



**P60974**  
18"Wx18"D  
Comfortuff sloped foam  
Front Open Seat  
A-4"xB-6.5" opening



**P61058**  
18"Wx18"D  
Ensolite® 2" waterfall foam  
Front Open Contoured Seat  
A-5.5"xB-8.25" opening



**P61086**  
18"Wx18"D  
Ensolite® 2" foam  
Solid Seat



**P61122**  
18"Wx20"D  
Ensolite® 1" foam  
Solid Seat



**P61121**  
18"Wx20"D  
Ensolite® 1" foam  
Front/Rear Open Seat  
A-4.5"xB-7.5" opening



**PP61038**  
18"Wx20"D  
Comfortuff  
1.5" waterfall foam  
Side Open Seat  
A-5"xB-8" opening



**P61038**  
20"Wx18"D  
Comfortuff  
1.5" waterfall foam  
Front Open Seat  
A-5"xB-8" opening



**P60913\***  
18"Wx18"D  
Ensolite® 2" waterfall foam  
Front/Rear Open Seat  
A-5.25"xB-8" opening



**P60903**  
18"Wx20"D  
Ensolite® 1" foam  
Front/Rear Open Seat  
A-4.5"xB-7.75" opening



**PP61121**  
20"Wx18"D  
Ensolite® 1" foam  
Side Open Seat  
A-4.5"xB-7.5" opening



**PP61122**  
20"Wx18"D  
Ensolite® 1" foam  
Solid Seat



**P61123\***  
20"Wx20"D  
Ensolite® 1" waterfall foam  
Front/Rear Open Seat  
A-5"xB-8" opening



**P60905**  
22"Wx18"D  
Ensolite® 1" foam  
Front/Rear Open Seat  
A-4.5"xB-7.75" opening



**P61126**  
22"Wx22"D  
Ensolite® 1" waterfall foam  
Front/Rear Open Seat  
A-5"xB-8" opening

ARMRESTS



**P13729**  
18"D Left Hand  
Armrest with Pad



**P13730**  
18"D Right Hand  
Armrest with Pad



**P13731**  
18"D Left Hand  
Armrest with  
Arm Trough



**P13732**  
18"D Right Hand  
Armrest with  
Arm Trough



**P13735**  
20"D Left Hand  
Armrest with Pad



**P13736**  
20"D Right Hand  
Armrest with Pad



**P13737**  
20"D Left Hand  
Armrest with  
Arm Trough

LEG RESTS



**P13738**  
20"D Right Hand  
Armrest with  
Arm Trough



**P13615**  
Left Hand  
Height-Adjustable  
Arms



**P13616**  
Right Hand  
Height-Adjustable  
Arms



**PL13725**  
Left Leg Rest



**PR13725**  
Right Leg Rest



**P13571**  
Left Elevating  
Leg Rest



**P13572**  
Right Elevating  
Leg Rest

FOOT PLATES



**PL11099**  
Left Foot Plate



**PR11099**  
Right Foot Plate



**PL11100**  
Left Foot Plate with Heel Loop



**PR11100**  
Right Foot Plate with Heel Loop



**P13891**  
Left Oversized Aluminum Foot Plate



**P13892**  
Right Oversized Aluminum Foot Plate



**PL11101**  
Left Padded Foot Plate

BACKS



**PR11101**  
Right Padded Foot Plate



**P13745**  
16\"/>



**P13746**  
16\"/>



**P13747**  
18\"/>



**P13748**  
18\"/>



**P13750**  
20\"/>



**P13751**  
20\"/>

BELTS



**P13752**  
22\"/>



**P13753**  
22\"/>



**PW60884**  
Waist Belt  
(62\", 64\", 66\", or 68\"  
circumference with  
12\" overlap)



**PT60884**  
Trunk Belt  
(62\", 64\", 66\", or 68\"  
circumference with  
12\" overlap)



**P60879**  
Calf Strap



**P11093**  
Bodypoint®  
Trunk Belt



**P11102**  
Bodypoint®  
Trunk Belt (pair)

POSITIONING AIDS



**P11116**  
Bodypoint® Trunk  
Belt & Waist Belt



**P11112**  
Bodypoint® XL  
Trunk Belt



**P11113**  
Bodypoint® Belt  
w/Quick Release  
Knobs



**P61081**  
Bodypoint®  
Calf Strap



**P11114**  
Bodypoint®  
Knee Belt



**PL13574**  
Left Hand  
Swing-Away  
Adjustable Lateral



**PR13574**  
Right Hand  
Swing-Away  
Adjustable Lateral

PANS



**PL13618**  
Left Hand  
Arm-Mounted  
Hip Guide



**PR13618**  
Right Hand  
Arm-Mounted  
Hip Guide



**P61006**  
Abductor/Deflector  
Small



**P13833**  
16\"/>



**P13834**  
18\"/>



**P13835**  
18\"/>



**P13836**  
20\"/>

HEAD SUPPORTS



**P13837**  
20\"/>



**P13838**  
22\"/>



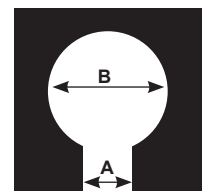
**P13839**  
22\"/>



**P13621**  
Head Support  
Large



**P13758**  
Head Support  
XL



Seat Opening  
Measurements



285TR in Tilt and Recline



285TR in Tilt

## SPECIFICATIONS

	16"Wx18"D Frame	18"Wx18"D Frame	18"Wx20"D Frame	20"Wx18"D Frame	20"Wx20"D Frame	22"Wx18"D Frame	22"Wx20"D Frame
Weight Capacity	(158kg) 350 lbs.	350 lbs.	350 lbs.	350 lbs.	350 lbs.	350 lbs.	350 lbs.
Seat Width	16" (40cm)	18" (45cm)	18" (45cm)	20" (50cm)	20" (50cm)	22" (55cm)	22" (55cm)
Width between Arm Rests							
Armrest with Pad	20" (50cm)	22" (55cm)	22" (55cm)	24" (60cm)	24" (60cm)	26" (66cm)	26" (66cm)
Armrest with Arm Troughs	18" (45cm)	20" (50cm)	20" (50cm)	22" (55cm)	22" (55cm)	24" (60cm)	24" (60cm)
Height Adjustable Armrests	19.5" (49cm)	21.5" (54cm)	21.5" (54cm)	23.5" (59cm)	23.5" (59cm)	25.5" (64cm)	25.5" (64cm)
Seat Depth	18" (45cm)	18" (45cm)	20" (50cm)	18" (45cm)	20" (50cm)	18" (45cm)	20" (50cm)
Seat Height Range From Floor to Top of Seat (transfer height)	22"-25" (55-63cm)						
Leg Rest Range						<u>with Padded Footplate</u>	
Leg Rest			16"-20" (40-50cm)			14.75"-18.75" (37-47cm)	
Elevating - Up			16.5"-23.5" (41-59cm)			15.25"-22.25" (38-56cm)	
Elevating - Down			15.5"-22.5" (39-57cm)			14.25"-21.25" (36-53cm)	
Usable Seat Depth w/Solid Back	16" (40cm)	16" (40cm)	18" (45cm)	16" (40cm)	18" (45cm)	16" (40cm)	18" (45cm)
Arm Height from Top of Seat							
Armrest with Pad					8" (20cm)		
Armrest with Arm Troughs					8.5" (21cm)		
Height Adjustable Armrests					4"-14" (10-35cm)		
Back Height From Top of Seat					22" (55cm)		
Gap between top of seat and bottom of back					4" (10cm)		
Maximum Back Slack					3" (7cm)		
Seat to Back Angle (or Range) (Recline)					0-40°		
Tilt Range					0-26°		
Head Support Height Range - top of Seat to bottom of Cervical Support					22.5"-30.5" (39-77cm)		
Under Seat Height Clearance					17.75" (45cm)		
Under Seat Width Clearance	14" (35cm)	16" (40cm)	16" (40cm)	18" (45cm)	18" (45cm)	20" (50cm)	20" (50cm)
Overall Width							
min. Armrest with Arm Troughs	24" (60cm)	26" (66cm)	26" (66cm)	28" (71cm)	28" (71cm)	30" (76cm)	30" (76cm)
max. Height Adjustable Armrests	29" (73cm)	31" (78cm)	31" (78cm)	33" (83cm)	33" (83cm)	35" (88cm)	35" (88cm)
Overall Length							
Min.					42" (106cm)		
Max.					66" (167cm)		
Back of Unit to Start of Commode Opening					15" (38cm)		
Turning Diameter					53" (134cm)		
Seat Used to Generate Specifications					#60993 18"Wx18"Dx2.5"H		