

Fixed ELITE Mounting Hardware

- ◆ **Stationary Mounting**
- ◆ **Fixed Positioning**

Mounting

Stationary to back post

Positioning

Fixed in place; no moving parts

Fits:

Exclusive with Carbon Series back supports

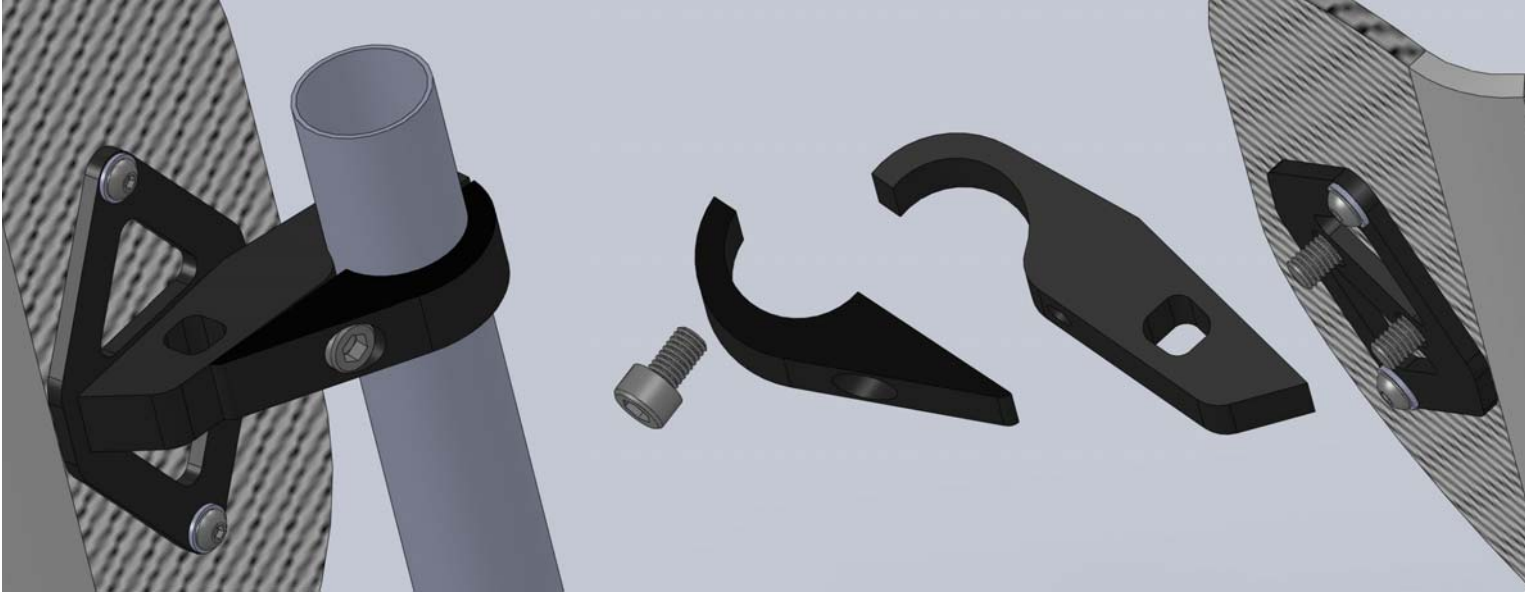
Active contours

14" through 18" widths

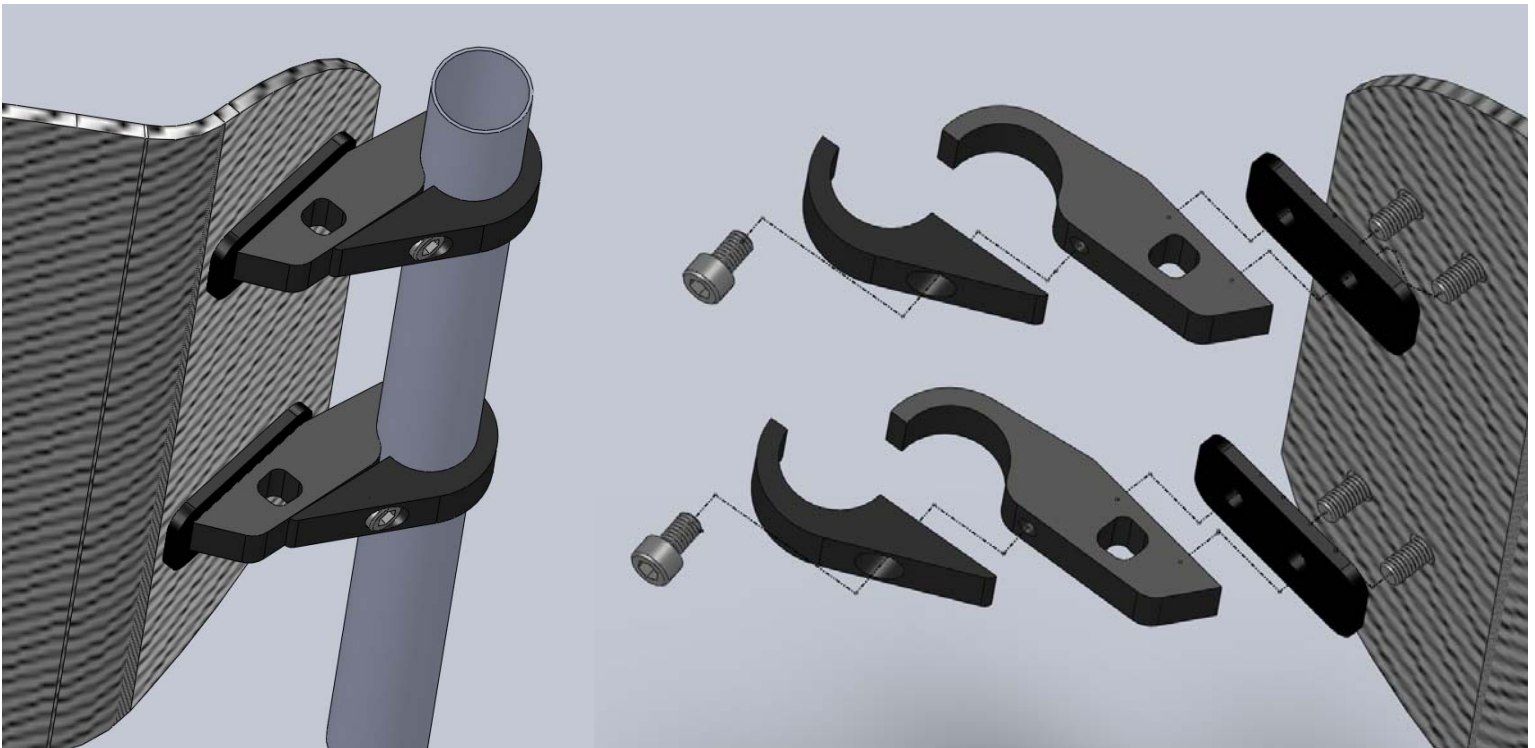
10", 13" and 16" heights



Fixed ELITE Hardware



Fixed Elite on low height Carbon Series
note: two point mounting



Fixed Elite on medium and standard height Carbon Series
note: four point mounting