



Aquatec® Ocean VIP Ergo /  
Aquatec® Ocean Dual VIP Ergo



This manual **MUST** be given to the user of the product.  
**BEFORE** using this product, this manual **MUST** be read and saved for  
future reference.

**AQUATEC®**

©2019 Invacare Corporation

All rights reserved. Reproduction, duplication or modification in whole or in part is prohibited without prior written permission from Invacare. Trademarks are identified by <sup>™</sup> and <sup>®</sup>. All trademarks are owned by or licensed to Invacare Corporation or its subsidiaries unless otherwise noted.

---

# Contents

---

This manual **MUST** be given to the user of the product.  
BEFORE using this product, this manual **MUST** be read and saved  
for future reference.

<b>1 General</b>	<b>4</b>
1.1 Introduction	4
1.2 Symbols in this manual	4
1.3 Warranty information	4
1.4 Compliance	5
1.4.1 Product-specific standards	5
1.5 Intended use	5
1.6 Service life	5
<b>2 Safety</b>	<b>6</b>
2.1 Safety information	6
2.2 Labels and symbols on the product	6
<b>3 Components</b>	<b>9</b>
3.1 Overview	9
<b>4 Setup</b>	<b>11</b>
4.1 Safety information	11
4.2 Assembling the shower and toilet commode	11
4.2.1 Adjusting the seat height	11
4.2.2 Installing the backrest	12
4.2.3 Installing the activation handle	13
4.2.4 Installing/Removing the seat plate	14
4.2.5 Adjusting the height of the armrests	14
4.2.6 Installing the footrests	15
4.2.7 Installing the headrest	15
4.2.8 Installing the rear antitippers	16
4.2.9 Installing/removing the brake covers / clamping protection covers	17
<b>5 Accessory (optional)</b>	<b>18</b>
5.1 Fitting/removing the toilet pan holder and toilet pan	18

<b>6 Usage</b>	<b>20</b>
6.1 Safety information	20
6.2 Swiveling the armrests	21
6.3 Swivelling the footrests	22
6.4 Tilting the seat frame with backrest	22
6.5 Tilting the backrest (Ocean Dual VIP Ergo only)	23
6.6 Engaging/disengaging the castor locks	24
<b>7 Transport</b>	<b>25</b>
7.1 Safety information	25
<b>8 Maintenance</b>	<b>26</b>
8.1 Maintenance and inspection	26
8.2 Cleaning and disinfection	26
<b>9 After Use</b>	<b>28</b>
9.1 Storage	28
9.2 Re-use	28
9.3 Disposal	28
<b>10 Troubleshooting</b>	<b>29</b>
10.1 Identifying and repairing faults	29
<b>11 Technical Data</b>	<b>30</b>
11.1 Dimensions and weight	30
11.2 Materials	32
11.3 Environmental parameters	32

# 1 General

## 1.1 Introduction

This user manual contains important information about the handling of the product. To ensure safety when using the product, read the user manual carefully and follow the safety instructions.

Note that there may be sections in this document, which are not relevant to your product, since this document applies to all available models (on the date of printing). If not otherwise stated, each section in this document refers to all models of the product.

The models and configurations available in your country can be found in the country-specific price lists.

Invacare reserves the right to alter product specifications without further notice.

Before reading this document, make sure you have the latest version. You find the latest version as a PDF on the Invacare website.

If you find that the font size in the printed document is difficult to read, you can download the PDF version from the website. The PDF can then be scaled on screen to a font size that is more comfortable for you.

For more information about the product, for example product safety notices and product recalls, contact your Invacare representative. See addresses at the end of this document.

## 1.2 Symbols in this manual

Symbols and signal words are used in this manual and apply to hazards or unsafe practices which could result in personal injury or property damage. See the information below for definitions of the signal words.



### WARNING

Indicates a hazardous situation that could result in serious injury or death if it is not avoided.



### CAUTION

Indicates a hazardous situation that could result in minor or slight injury if it is not avoided.



### IMPORTANT

Indicates a hazardous situation that could result in damage to property if it is not avoided.



### Tips and Recommendations

Gives useful tips, recommendations and information for efficient, trouble-free use.



This product complies with Directive 93/42/EEC concerning medical devices. The launch date of this product is stated in the CE declaration of conformity.



Manufacturer of the product.

## 1.3 Warranty information

We provide a manufacturer's warranty for the product in accordance with our General Terms and Conditions of Business in the respective countries.

Warranty claims can only be made through the provider from whom the product was obtained.

## 1.4 Compliance

Quality is fundamental to the company's operation, working within the disciplines of ISO 13485.

This product features the CE mark, in compliance with the Medical Device Directive 93/42/EEC Class 1.

We are continuously working towards ensuring that the company's impact on the environment, locally and globally, is reduced to a minimum.

We only use REACH compliant materials and components.

### 1.4.1 Product-specific standards

The product has been tested and conforms to the standard ISO 17966 (Assistive products for personal hygiene that support users) and related standards. This includes testing concerning flammability. Progressive smouldering ignition and flaming ignition do not occur.

For further information about local standards and regulations, contact your local Invacare representative. See addresses at the end of this document.

## 1.5 Intended use

The shower and toilet commode is designed exclusively as an aid for showering or bathing, going to the toilet, for use during personal hygiene (e.g. in front of the basin) or for transferring patients while indoors. It is intended to be used by youth and adult patients with or without caregiver's assistance, who have:

- Difficulty standing or keeping their balance
- Weak legs or lower limb disability
- Medical conditions that impair their balance

The product is intended for institutional and private house hold use. Any other use is prohibited.



### **WARNING!** **Risk of injury**

- Never use the product as an aid for getting into or out of a bathtub, for climbing or descending, as a support or for similar purposes.
- Do not use the product outdoors.

As a toilet commode, the product can be used over a standard toilet or independently with the toilet pan (optional).

Temperature for use: 10 - 65 °C

## 1.6 Service life

The expected service life of this product is five years when used daily and in accordance with the safety instructions, maintenance intervals and correct use, stated in this manual. The effective service life can vary according to frequency and intensity of use.

## 2 Safety

### 2.1 Safety information



#### **WARNING!**

##### **Risk of injury or damage**

- Do not use this product or any available optional equipment without first completely reading and understanding these instructions and any additional instructional material such as user manuals, service manuals or instruction sheets supplied with this product or optional equipment.
- If you are unable to understand the warnings, cautions or instructions, please contact a healthcare professional, Invacare provider or qualified technician before attempting to use this product.



#### **WARNING!**

##### **Risk of injury**

- Do not stand on the product.
- Do not use as a climbing aid.
- Do not use outdoors.



#### **WARNING!**

##### **Risk of injury**

- Do not use if defective.
- In the event of a malfunction, contact your provider immediately.
- Do not make any unauthorized changes or alterations to the product.
- Only use accessories intended for this product.



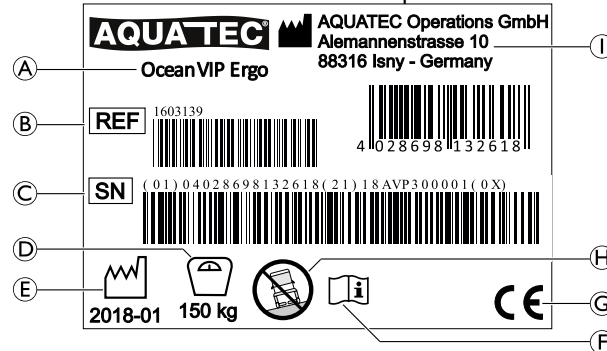
#### **IMPORTANT!**

The information contained in this document is subject to change without notice.

### 2.2 Labels and symbols on the product

#### Identification label

The identification label contains important information:




Ⓐ	Product designation
Ⓑ	Reference number
Ⓒ	Serial number
Ⓓ	Maximum user weight
Ⓔ	Date of manufacture
Ⓕ	Read user manual
Ⓖ	Conformity mark
Ⓗ	Note (use only on flat surfaces)
Ⓘ	Manufacturer address




The identification label is attached to the inside of the left side part.

### Labels on the product

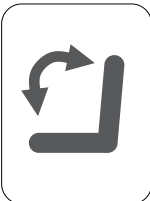
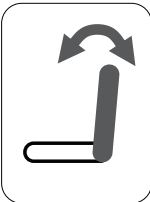
The following label is attached to the backside of the headrest:	
Label	Description
	<p><b>CAUTION!</b></p> <p>Risk of impact</p> <p>Your body can be hit by the backrest/headrest when pulling the activation handle.</p> <p>– Make sure there is enough space between you and the backrest/headrest when tilting the seat frame with backrest.</p>

The following label is attached to the handle of the backrest:

Label	Description
	<p><b>WARNING!</b></p> <p>Risk of tipping over</p> <ul style="list-style-type: none"> <li>– Do not step on the footrest when getting into or out of the shower and toilet commode.</li> <li>– Push the footrests to the sides or fold up the foot plates before getting into or out of the shower and toilet commode.</li> <li>– Before sitting down or standing up, turn the castors so that the lock is pointing forwards.</li> <li>– Do not lean too far forwards when sitting in the shower and toilet commode.</li> </ul>

The following labels are attached to the activation handles:

Label	Description
-------	-------------

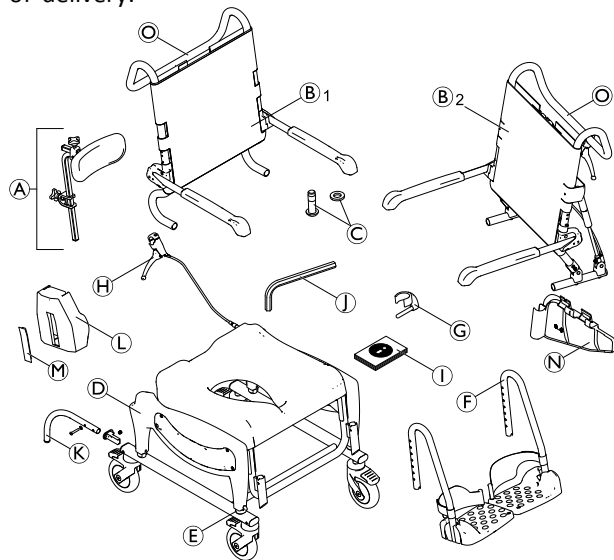
	Activation handle for seat tilting.
	Activation handle only for backrest tilting.



## 3 Components

### 3.1 Overview

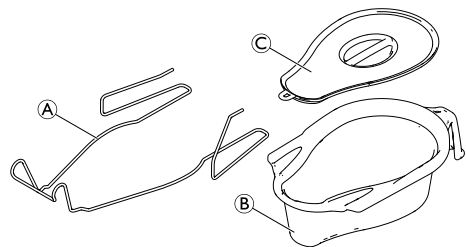
The following components are included within the scope of delivery:



(A)	Head support
(B <sub>1</sub> )	<b>Ocean VIP Ergo:</b> Backrest with backrest cover and armrests

(B <sub>2</sub> )	<b>Ocean Dual VIP Ergo:</b> Backrest with backrest cover, armrests and activation handle for backrest tilting
(C)	Screws (4x) and washers (4x) for backrest fixation
(D)	Seat frame with seat plate and side parts with base frame and castors
(E)	Clips (4x) for height adjustment
(F)	Footrests with heel straps (2x)
(G)	Clips (2x) for footrests
(H)	Activation handle for seat tilting
(I)	User manual
(J)	Allen key
(K)	Rear antitipper with screw, washer and mounting cap (2x) (Ocean Dual VIP Ergo only)
(L)	Brake cover (2x)
(M)	Brake lever cover (2x)
(N)	Clamping protection cover (2x)
(O)	Push bar

## Accessory — Toilet pan holder with toilet pan



Ⓐ	Toilet pan holder
Ⓑ	Toilet pan
Ⓒ	Lid

## 4 Setup

### 4.1 Safety information



#### WARNING!

- Check the parts for transport damage before commissioning and contact your provider if required.
- Ensure during assembly that the parts are positioned correctly with respect to one another.
- Self-locking screws/nuts or thread-locking adhesive are used for several connections. If these are loosened, they must be replaced by new self-locking screws/nuts or they must be secured using new thread-locking adhesive.

### 4.2 Assembling the shower and toilet commode

This section describes the assembly. Disassembly takes place in the reverse order.



The armrest height, footrest height, footrest angle, headrest, heel strap, tension of backrest cover and accessories must be adjusted to optimally fit the user.

#### 4.2.1 Adjusting the seat height

This section describes the assembly. Disassembly takes place in the reverse order.

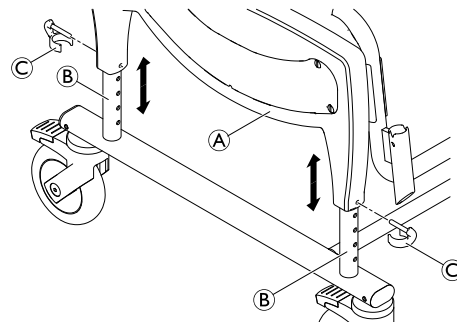


#### WARNING!

- Do not adjust the seat height of the commode when someone is sitting on it.



The seat height must be adjusted on both sides simultaneously.



1. Slightly raise the commode at the side part ①.
2. Remove the four clips ③ (two on each side).
3. Set the correct height by simultaneously moving the seat frame upwards or downwards on the four tubes ② of the base frame.
4. Bring the clip mounts on the side part in line with a hole in the base frame.
5. Insert the four clips from the outside into the side part, until the clip edges enclose the base frame tube ②.



#### WARNING!

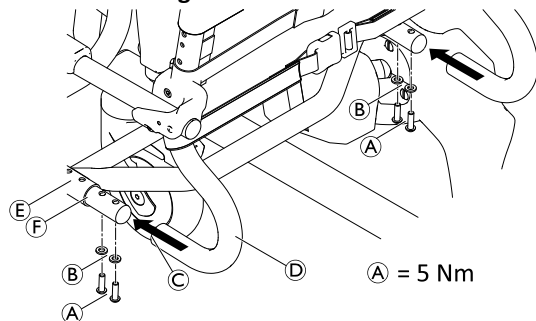
##### Risk of injury

- Make sure that all four clips are securely fastened.
- Make sure that all four tubes are set to the same height.



The seat height can be adjusted to accommodate different situations of use e.g. transfer from a bed or a wheelchair or use above toilet etc.

#### 4.2.2 Installing the backrest



1. Push down all four foot pedals of the castors to lock them.
2. Push the backrest **D** from behind onto the seat frame **E**, until the collar **C** touches the seat frame tube **F**.



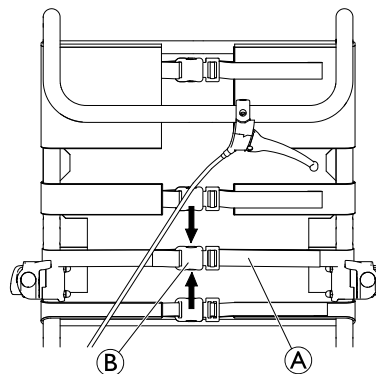
#### IMPORTANT!

- Firmly tighten the screws using the Allen key supplied.
- Check the screws regularly to ensure they are fastened securely.

3. Position a washer **B** on each screw **A** and secure the backrest on each side.
4. Tighten the screws with a torque of 5 Nm.

#### Adjusting the backrest cover

The tension of the backrest can be adjusted as needed.



#### WARNING!

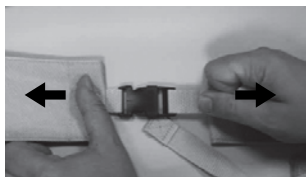
- Make sure that at least three belts are always passed around the backrest frame (on the outside) and their belt buckles are fastened.

#### Tightening:

1. Pull the belts **A** of the backrest cover tighter.

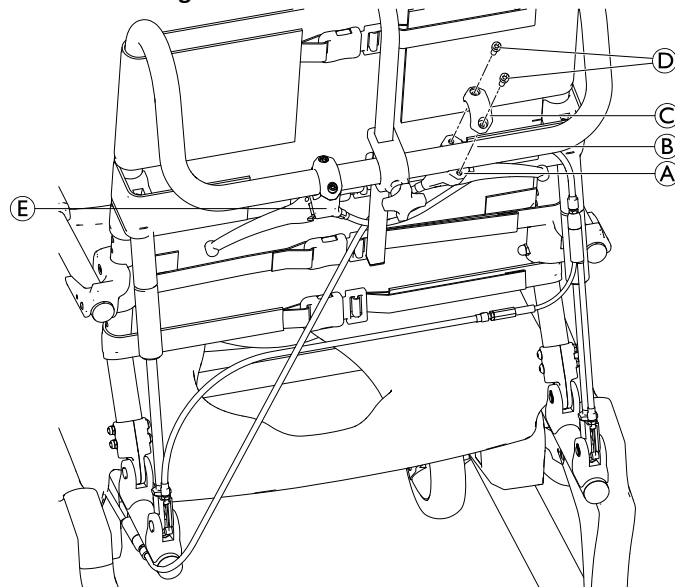
#### Loosening:

1. Open the buckles **B** by squeezing the retaining lugs together (arrows).
2. Push the belts back a little through the buckle.
3. Fasten the belt buckles.
4. Retighten the belts gently.

**WARNING!****Risk of injury due to damaged backrest buckles!**

Check for secure fastening of the backrest buckles each time the product is maintained or reconditioned.

- Check all buckle clips for secure fastening by closing the buckles and pulling on both ends.
- Replace the backrest/backrest buckles if a buckle opens under the applied force.

**4.2.3 Installing the activation handle**

1. Remove the clamping part © from the activation handle ① by loosening the screws ②.
2. Position the activation handle ① for seat tilting from the underside at the right side of the handle tube ③.



The handle should be slightly turned inwards to the backrest.

3. Install the activation handle to the handle tube using the clamping part © and screws ②.



For the Ocean Dual VIP Ergo, the activation handle ⑤ for backrest tilting is already installed to the left side of the handle tube. The position of the activation handle can be changed if required.

## 4.2.4 Installing/Removing the seat plate

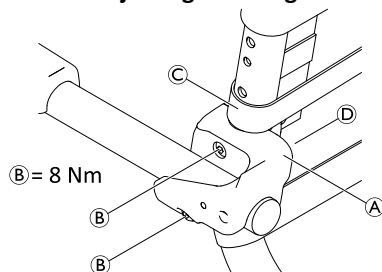
### Installing:

1. Place the seat plate on the seat frame with the cutout to the front.
2. With your hand flat, press the seat plate down at the sides and then at the front and back until the seat plate snaps onto the seat frame.

### Removing:

1. Pull the seat plate upwards at the rear.

## 4.2.5 Adjusting the height of the armrests



1. On the backrest cover, open the second lowest belt ③ and loosen the other belts.



The nuts are inserted loosely in the securing clamp and can fall out.

2. Unscrew the screws ② of the armrest bracket ① using the Allen key supplied.
3. Remove the securing clamp ④ with the nuts from the inside of the backrest frame.
4. Remove the backrest bracket ① with the armrest and move it upwards.



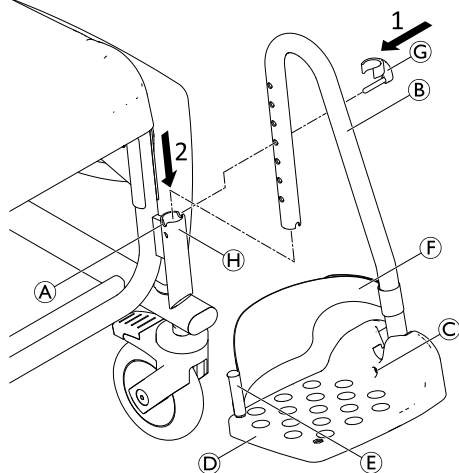
The smaller hole serves to fix the securing clamp.

5. Insert the screws in the armrest bracket and guide them through the holes in the backrest frame.
6. If required, put the nuts back into the securing clamp.
7. Place the securing clamp on the backrest frame inserting the fixation pin into the smaller hole.
8. Turn the screws in the nuts and tighten.
9. Depending on the armrest height, pass the second lowest belt on the outside of the backrest frame or on the inside, fasten and tighten all belts.
10. The height adjustment procedure is the same for the right and left armrest.




To attach accessories, the second lowest belt can be opened and the backrest cover can be passed by the backrest frame on the inside.


## 4.2.6 Installing the footrests



1. Insert the pin of the clip ⑥ from the outside into the required hole on the footrest ⑥. Make sure the clip engages around the tube.
2. Push the footrest into the guide ⑧ at the front of the side part until the pin of clip ⑥ engages in the groove ①. The footrest can no longer be turned to the side.


 The assembly procedure is the same for the right and the left footrest.

## Adjusting the height of the footrests

 The footrests can be shortened if required (refer to the service manual). Shortening the footrests must be performed by a qualified technician.

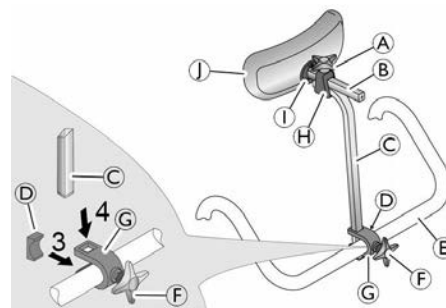
1. Slightly pull up the footrest ⑥.
2. Pull the clip ⑥ out of the hole in the footrest and re-insert it into the required hole. Pull out the footrest slightly further if necessary.
3. Push down the footrest until the groove ① catches the pin of the clip.
4. Set the other footrest to the required height as described.

## Adjusting the inclination of the foot plates

 The inclination of the foot plates can be adjusted infinitely variably.

1. Loosen the Allen screw ③ on the foot plate using a size 4 Allen key.
2. Turn the foot plate ④ to the required position.
3. Re-tighten the Allen screw.

## 4.2.7 Installing the headrest



1. Use the star handle ⑥ to insert the screw a little into the bracket ③.
2. Push the bracket with the screw onto the handle of the backrest ⑤ from behind with the screw engaging in the hole of the backrest's handle.
3. Insert the plate ④ into the bracket from the front so that both lugs of the plate face down and up and the curved plate side touches the handle of the backrest.
4. Push the height adjustment tube ② from above into the recesses of the bracket.
5. Use the star handle to tighten the screw until the height adjustment tube is fixed in place.
6. Push the pad ① and the pad holder ⑧ into the holder ⑨ on the height adjustment tube.
7. Use the star handle ⑥ to tighten the upper screw until the pad holder is fixed in place.



To adapt it to the user, the height adjustment tube can be fitted with the curve facing the front or the back.

The headrest pad ① can be removed and replaced by other pad shapes (optional). To remove it, loosen the retaining bolts ①.

### Adjusting the length of the headrest



The headrest tubes ③ and ② can be shortened if required (refer to the service manual). Shortening the headrest tube must be performed by a qualified technician.

### 4.2.8 Installing the rear antitippers



#### **WARNING!**

#### **Risk of tipping**

There is a risk of severe injury on the Ocean Dual VIP Ergo when the backrest is tilted. The complete chair can tilt backwards.

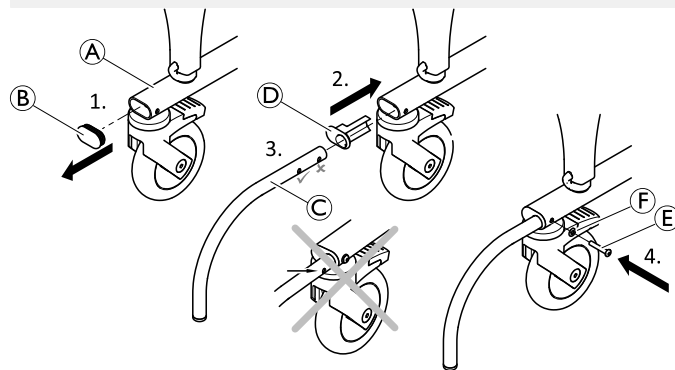
– Before using the Ocean Dual VIP Ergo, make sure that both rear antitippers are installed.



#### **WARNING!**

#### **Risk of injury**

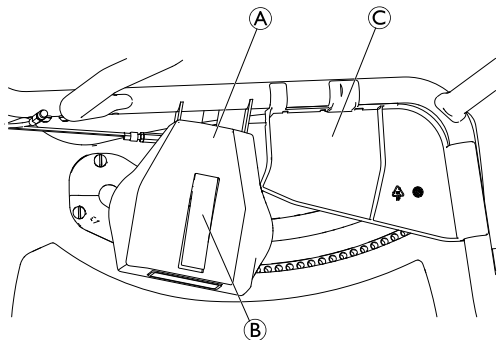
– Never stand on the antitippers.



1. Remove the cover cap ② from the base frame ①.
2. Attach the mounting cap ④ to the base frame.
3. Insert the antitipper tube ③.
4. Fix the antitipper through its second hole using the screw ⑤ with the washer ⑥.
5. Install the second antitipper on the other side.

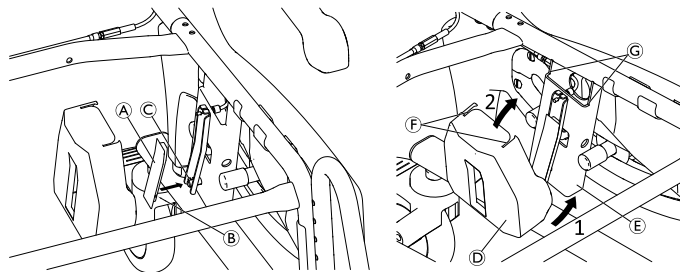


## 4.2.9 Installing/removing the brake covers / clamping protection covers



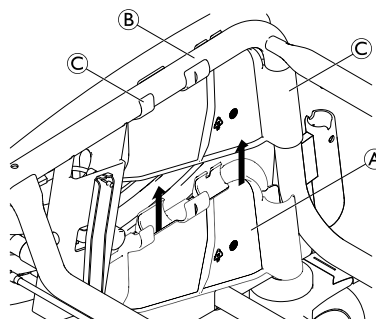
(A)	Brake cover
(B)	Brake lever cover
(C)	Clamping protection cover

### Brake cover



1. Attach the brake lever cover (A) by pinning up the slot (B) to the small shaft (C).
2. Position the lower part of the brake cover (D) at an angle from below over the brake housing (E).
3. Fold the upper part of the brake cover to the brake housing so that the recesses (F) sit flush with the edges (G).
4. Install the second brake cover on the other side.

### Clamping protecting cover



1. Install the clamping protecting cover (A) by snapping it onto the frame tubes (B). Make sure that all clips (C) are fully engaged.
2. Install the second clamping protecting cover on the other side.

## 5 Accessory (optional)

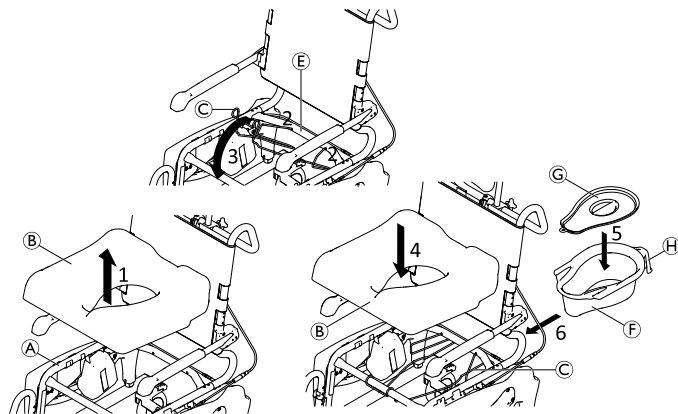


### WARNING!

#### Risk of injury

– The assembly of accessories (optional) must be carried out according to the corresponding instructions.

### 5.1 Fitting/removing the toilet pan holder and toilet pan



The toilet pan (F) can be inserted/removed with or without the lid (G).

1. Remove the seat (B) from the frame (A).
2. Position the ends of the toilet pan holder (C) into the holes of the rear cross tube (E).

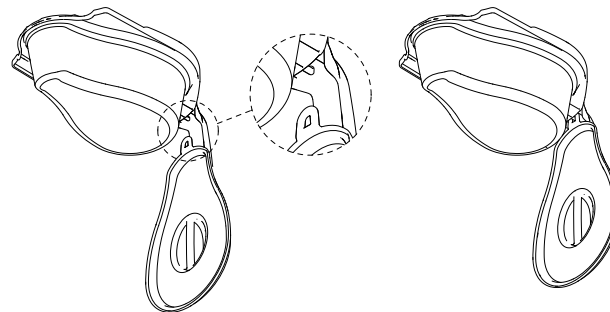
3. Engage the front part of the toilet pan holder with the front cross tube (D).
4. Re-fit the seat to the frame.
5. Place the lid on or remove it from the toilet pan.
6. Hold the toilet pan by its handle (H) and insert from the rear side between the toilet pan holder and the seat.



Slightly push down the toilet pan when inserting or removing.



The lid can be hung on the plastic hook at the underside of the toilet pan handle.



There is a fill level indicator on the inner wall of the toilet pan.

2.5 l	<input type="checkbox"/>	
2.25 l	<input type="checkbox"/>	
2 l	<input type="checkbox"/>	<input type="checkbox"/>
1.75 l	<input type="checkbox"/>	<input type="checkbox"/>
1.5 l	<input type="checkbox"/>	
1.25 l	<input type="checkbox"/>	
1 l	<input type="checkbox"/>	<input type="checkbox"/>
0.75 l	<input type="checkbox"/>	
0.5 l	<input type="checkbox"/>	
0.25 l	<input type="checkbox"/>	

## 6 Usage

### 6.1 Safety information



#### **WARNING!**

- Only use the shower and toilet commode on a flat surface and indoors.
- Observe the specifications on the identification label. Do not overload the shower and toilet commode.
- Observe the safety labels on the backside of the headrest and on the handle of the backrest, 2.2 *Labels and symbols on the product, page 6*.
- Do not place excessive weight on the shower and toilet commode.
- Always perform a visual inspection of the product for external damage before each use.



#### **WARNING!**

##### **Risk of slipping and rolling**

- Before use, make sure that the seat is securely fastened to the seat frame
- Lock all castors with levers using the foot levers before sitting down on the shower and toilet commode or standing up from it, as well as in the parking position.



#### **WARNING!**

##### **Risk of tipping**

- Swivel the footrests to the side or fold up the foot plates before sitting down or standing up.
- Before sitting down or standing up, turn the front castors so that the lock is pointing forwards.
- Never stand on the footrests.
- Do not lean excessively forwards.
- Only push the seated user on the commode when the seat frame and backrest are set in an upright position.
- Only transfer the user from or to the commode when the seat frame and backrest are set in an upright position.
- Never remove the pneumatic springs (Ocean Dual VIP Ergo only).



#### **WARNING!**

##### **Risk of injury!**

- Before using the Variable Soft Seat (optional accessory), the lateral covers (part-no. AP1605002) have to be installed.



#### **WARNING!**

##### **Risk of tipping backwards!**

- The Ocean Dual VIP Ergo must only be used if the rear antitippers are installed.

**WARNING!****Risk of tipping**

- The shower and toilet commode must only be moved by using the push bar.

**CAUTION!****Risk of burning your skin**

The product components can heat up when exposed to external sources of heat.

- Consider heated up surfaces when using the shower and toilet commode in the sauna or when it is exposed to hot water.
- Do not expose the product to direct sunlight before use.

**CAUTION!****Risk of catching due to tilting mechanism**

- When tilting the seat frame, make sure that the user's arms are placed on the armrests.
- Make sure that the clamping protection cover is installed to the frame, see chapter 4.2.9 *Installing/removing the brake covers / clamping protection covers, page 17.*

**IMPORTANT!****Risk of breaking the headrest**

- Only steer or push the shower and toilet commode using the handle on the backrest, never with the headrest.

**IMPORTANT!****Risk of damage to the product**

- Do not lift the shower and toilet commode using the footrests, armrests or any accessories.



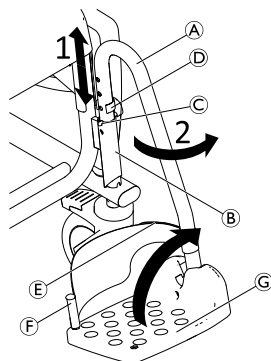
For users with high risk of standing on the footrests (e.g. dementia), front antitippers (part-no. AP1603992) are available as accessories to prevent the shower and toilet commode from tipping forward.

## 6.2 Swiveling the armrests

**CAUTION!****Risk of getting fingers caught in the folding mechanism**

- Do not insert fingers in the articulated joint when folding the armrests up or down.
- Do not insert fingers between the armrest and the backrest when folding back the armrests.
- Make sure that no parts get caught in the joints.

## 6.3 Swivelling the footrests



### Entry position/exit position:

1. Slightly pull up the footrest (A) in the guide (B) until the pin of clip (D) no longer engages in the groove (C).
2. Swivel the footrest to the side.

### Driving position:



#### **CAUTION!**

**Risk of accident due to loose footrest**

– Fix footrests in the driving position.

1. Turn the footrest (A) inwards.
2. Push the footrest downward, until the pin of clip (D) engages in the groove (C).



Alternatively, the foot plates (G) can be swivelled upwards to enter/exit the shower and toilet commode.

## Removing/fitting the heel strap

1. Open the hook and loop strip (E) on the heel strap.
2. Remove the screw (F) from the underside of the foot plate.
3. Remove the heel strap from the flexible plastic pin.



To attach the strap, carry out the same procedure in the reverse order.



When installing ensure that the hook and loop strip of the heel strap is facing backwards.

## 6.4 Tilting the seat frame with backrest



### **IMPORTANT!**

– Never reach into the area between the seat frame with backrest and the front tubular frame between the side parts when tilting.

### Tilting backwards/forwards



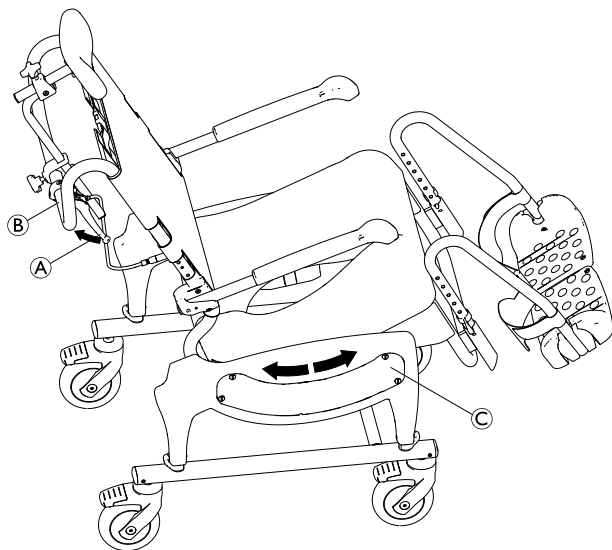
The seat frame can be tilted approx. 40° backwards together with the backrest.



If armrest locks (optional accessory) are used and the armrests are mounted in the lowest possible position, the seat cannot be tilted completely backwards. The maximum inclination is 35°.



For the two lowest seat heights, the complete adjustment range of the footrest can not be used. Before use, check that the footrests do not touch the floor when tilting the seat forwards. If necessary re-adjust the seat height or the footrest height accordingly.



### CAUTION!

#### Risk of crushing

Your fingers or hands can get caught and squeezed by the tilting mechanism.

- Before every use, make sure that the side part covers © of the tilting mechanism are correctly mounted.

1. Push down all four foot pedals for the castors to lock them.
2. Hold the shower chair at its push bar ②.
3. Pull and hold the activation handle ①.
4. Set the required inclination by pushing down or pulling up the handle ②.
5. Release the activation handle and let the pins of the tilting mechanism engage in the nearest holes. The seat frame is set at the currently set inclination.

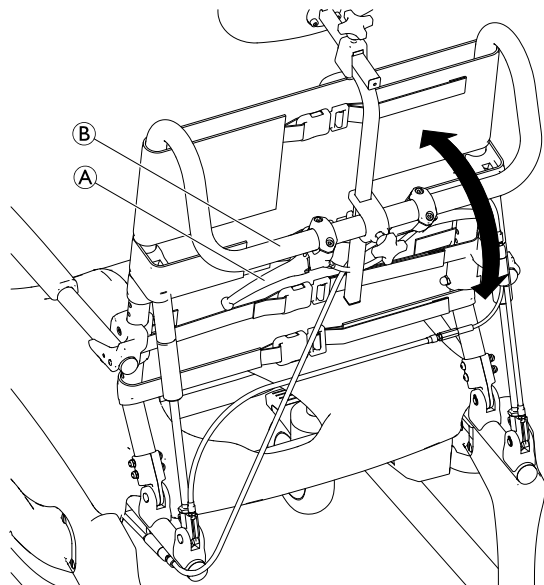
## 6.5 Tilting the backrest (Ocean Dual VIP Ergo only)




### CAUTION!

#### Risk of getting fingers caught between armrest bracket and side part

- Never reach into the area between the armrest bracket and the side part when tilting backwards the seat frame or when lowering the backrest.
- When tilting the seat frame or the backrest make sure that the user's arms are placed on the armrests or folded in front of the body.



1. Push down all four foot pedals for the castors to lock them.
2. Hold the shower chair at its push bar **B**.
3. Pull and hold the activation handle **A**.

 The activation handle is equipped with a locking device. For activating the handle, the locking device has to be pulled in advance.

4. Tilt the backrest to the required position.
5. Release the activation handle to fix the backrest in the current position.



Increased force is needed for tilting backwards without seated user. Automatic tilting upwards without seated user when activation handle is pulled.

## 6.6 Engaging/disengaging the castor locks

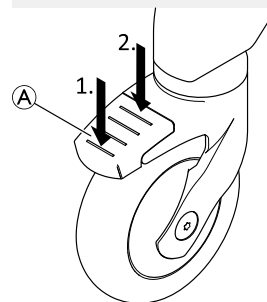


### CAUTION!

#### Risk of trapping/squeezing

All castor locks are foot-operated.

– Do not operate the castor locks by hand.



1. To lock the castor locks step on the rear end of the pedal **A** until it engages.
2. To unlock the castor locks step on the front end of the pedal until it disengages.



Castor with blue lever (option) is used to engage the direction lock for easier straight movement.



---

## 7 Transport

---

### 7.1 Safety information



The product can be dismantled for transport into the parts of the scope of delivery, see chapter 3 *Components, page 9*.

1. Disassemble the product: Refer to chapter 4 *Setup, page 11* by following the assembly steps in reverse order.



#### **IMPORTANT!**

##### **Risk of damage to the product**

- Transport the product in a dry area.
- Do not expose the product to direct sunlight.
- Refer to the storage and shipping conditions in chapter 11.3 *Environmental parameters, page 32*.



#### **IMPORTANT!**

- Self-locking screws/nuts or thread-locking adhesive are used for several connections. If these are loosened, they must be replaced by new self-locking screws/nuts or they must be secured using new thread-locking adhesive.

## 8 Maintenance

### 8.1 Maintenance and inspection

The product is maintenance-free, provided the cleaning and safety instructions outlined below are adhered to.

To ensure good performance and safety the following checks should regularly be carried out:

- Check the product and accessories regularly for damage. Do not use the product if defective.
- Check tilting function of the seat frame and backrest (Ocean Dual VIP Ergo). Easy tilting and secure locking of the position is mandatory.
- In case of damage or malfunction it is recommended to contact the provider.
- Ensure that the product is securely assembled incl. all protection covers and that screws are properly tightened.



#### **WARNING!**

##### **Risk of injury and damage**

If the product is improperly adjusted it can cause accidents and severe injuries.

- The product must be repaired by a qualified technician.
- Damaged parts have to be replaced by a qualified technician.
- Only use original Invacare spare parts.

### 8.2 Cleaning and disinfection

The product can be cleaned and disinfected using commercially available agents.



#### **IMPORTANT!**

In the sensitive area of the bathroom and toilet, hygiene is particularly important.

- Keep the product clean at all times and wipe it down regularly.
- Disinfect the product regularly.

1. Disinfect the product by wiping down all generally accessible surfaces with disinfectant (after disassembling the product, if possible).



#### **IMPORTANT!**

All cleaning agents and disinfectants used must be effective, compatible with one another and must protect the materials they are used to clean. For further information on decontamination in Healthcare Environments, please refer to 'The National Institute for Clinical Excellence' guidelines on Infection Control [www.nice.org.uk/CG139](http://www.nice.org.uk/CG139) and your local infection control policy.

- Clean by hand or in a washing machine or autoclave.
- Clean without scouring agent.

#### **Cleaning in a domestic environment**

1. Remove any accessories fitted (only accessories which do not require tools).
2. Pull the footrests out of the guides.
3. Remove the seat plate and the backrest cover.

4. Remove the brake covers and clamping protection covers, see chapter 4.2.9 *Installing/removing the brake covers / clamping protection covers*, page 17.
5. Wipe down the individual parts using a cloth or brush and commercially available cleaning agents and disinfectants.
6. Rinse the parts with warm water.
7. Dry the parts with a cloth.
8. Re-assemble the product, see chapter 4 Setup.

### Cleaning in a clinical environment



In addition to cleaning as described above we recommend cleaning the product prior to the use by another patient, after ending of the period of use or on a regular basis (depending on which occurs first) at

- 90°C for 1 minute
- 85°C for 3 minutes
- 80°C for 10 minutes

in the autoclave.



### CAUTION!

#### Risk of burning your skin

- Allow the product to cool after cleaning in the washing machine or autoclave.



### IMPORTANT!

#### Risk of damage

- Washing at higher temperatures can cause damage.
- Do not tumble dry.



### IMPORTANT!

Excessive cleaning can damage textile.

- We recommend replacing the backrest cover every two years for hygiene reasons.

### Cleaning the toilet pan (optional)

The toilet pan can be cleaned in an autoclave at following temperatures/times:

- 90 °C for 1 minute
- 85 °C for 3 minutes
- 80 °C for 10 minutes.

### Cleaning the backrest cover (optional)

1. Remove the backrest cover.
2. Machine-wash the cover at max. 60 °C using a mild detergent.

## 9 After Use

### 9.1 Storage



#### **WARNING!**

##### **Risk of damage to the product**

- Store the product in a dry area.
- Do not store the product near heat sources.
- Do not expose the product to direct sunlight.
- Refer to the storage and shipping conditions in chapter *11.3 Environmental parameters, page 32*.



After long time storage, a higher force may be needed to trigger the gas spring (Ocean Dual VIP Ergo only).

### 9.2 Re-use

The product is suitable for repeated use. The number of times it can be used depends on how often and in which way the product is used. Before re-use, clean and disinfect the product thoroughly (→ *8.2 Cleaning and disinfection, page 26*) and check for damage and correct assembly.

### 9.3 Disposal

Be environmentally responsible and recycle the different materials and components of this product separately through your recycling facility at its end of life.

The disposal and recycling of used products and packaging must comply with the laws and regulations for waste

handling in each country. Contact your local waste management company for information.

## 10 Troubleshooting

### 10.1 Identifying and repairing faults

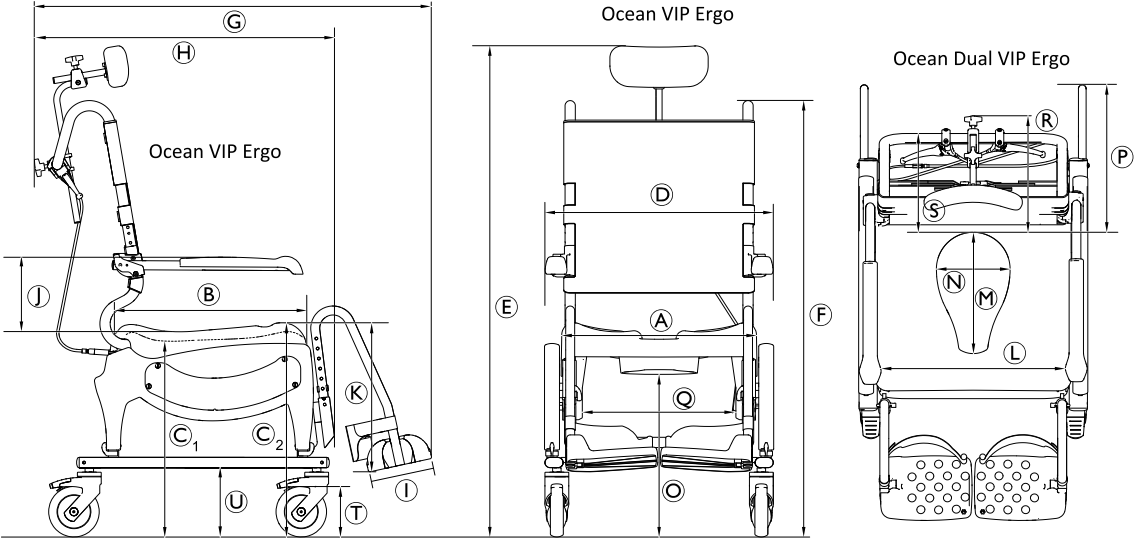


The following table provides information on malfunctions and their possible causes. If you cannot correct the malfunction using the solutions named, contact your provider directly.

Malfunction	Possible cause	Solution
Difficulty in adjusting the seat height	Dirt between the seat frame and the side part	Disassemble the base frame and clean base frame and side part thoroughly
The castors are difficult or impossible to turn	Dirt between the fork and the rim	Thoroughly clean the castors
Difficulty pushing the footrests to the side	Deposits in the guides	Thoroughly clean the footrests and the guides
The seat frame with backrest cannot be tilted	Deposits in tilting mechanism	Remove brake cover and brake lever cover and thoroughly clean the tilting mechanism
	Bowden cable not correctly adjusted	The Bowden cable must be adjusted by a qualified technician
Higher force needed to trigger the gas spring (Dual VIP)	Long-time storage	Repeat the tilting of the seat frame several times
The backrest cannot be tilted (Dual VIP)	Bowden cable not correctly adjusted	The Bowden cable must be adjusted by a qualified technician
Rattling noise during tilting of the seat frame with backrest.	Bowden cable not correctly adjusted	The Bowden cable must be adjusted by a qualified technician
	The activation handle is not pulled completely	Pull the activation handle completely.

# 11 Technical Data

## 11.1 Dimensions and weight



	Ocean VIP Ergo	Ocean VIP Ergo XL	Ocean Dual VIP Ergo
Ⓐ	480 mm		
Ⓑ	480 mm		
Ⓒ <sub>1</sub>	475 mm – 600 mm		
Ⓒ <sub>2</sub>	533 mm – 658 mm		
Ⓓ	565 mm	645 mm	565 mm

	Ocean VIP Ergo	Ocean VIP Ergo XL	Ocean Dual VIP Ergo
Ⓔ	ca. 1052 mm – 1340 mm (in neutral seat position)		
Ⓕ	ca. 1052 mm – 1202 mm (in neutral seat position)		
Ⓖ	ca. 1000 mm		
Ⓗ	ca. 742 mm		
Ⓘ	160 mm		
Ⓢ	213 mm / 251 mm / 289 mm		
Ⓚ	319 mm – 469 mm (in steps of 25 mm)		
Ⓛ	455 mm	535 mm	455 mm
Ⓜ	350 mm (top) / 300 mm (bottom)		
Ⓝ	250 mm (top) / 182 mm (bottom)		
Ⓞ	400 mm – 525 mm		
Ⓟ	—	—	380 mm
Ⓠ	385 mm		
Ⓡ	295 mm	—	
Ⓢ	230 mm	—	
Ⓣ	Æ 5" (127 mm)		
Ⓤ	172 mm		
Angle of inclination seat	-5° – 40°		
Angle of inclination backrest	—	—	5° – 35°
Turning diameter	2200 mm		

	Ocean VIP Ergo	Ocean VIP Ergo XL	Ocean Dual VIP Ergo
Reversing width	1140 mm		1290 mm
Product weight	23.5 kg	23.5 kg	28.3 kg
Maximum user weight	150 kg		

## 11.2 Materials

Frame	Stainless steel, powder-coated
Seat plate	Polypropylene, fiber-glass reinforced
Backrest cover	Nylon, PVC-coated
Footrests	Polypropylene, fiber-glass reinforced
Armrest pad	Polypropylene
Castors	Plastics and stainless steel

Relative humidity	30 % - 75 %, non-condensing
Atmospheric pressure	795 - 1060 hPa

All product components are corrosion resistant and do not contain natural rubber latex.

## 11.3 Environmental parameters

Operating conditions	
Ambient temperature	10 - 65 °C
Relative humidity	15 % - 93 %, non-condensing
Atmospheric pressure	795 - 1060 hPa
Storage and shipping conditions	
Ambient temperature	0 - 65 °C





1639504-C 2019-01-30



**AQUATEC®**

**Making Life's Experiences Possible®**