



SIZE	PART NUMBERS	
	CINCH-MOUNT™	FLAT-MOUNT™
X-SMALL	SH321XS-B2	SH321XS-B1

 CINCH-MOUNT™ END FITTING 2x  
HKA2-R-1  
  
 FLAT-MOUNT™ END FITTING 2x  
HKA1-R-1

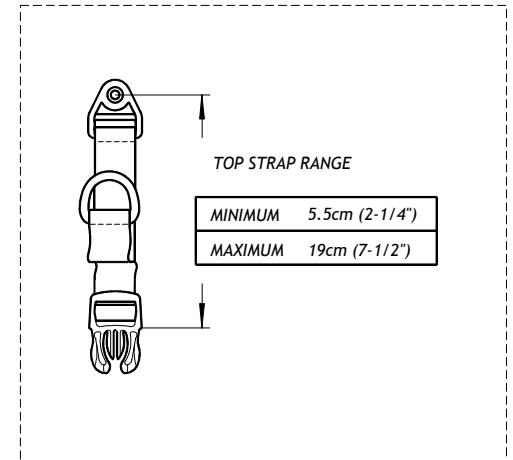
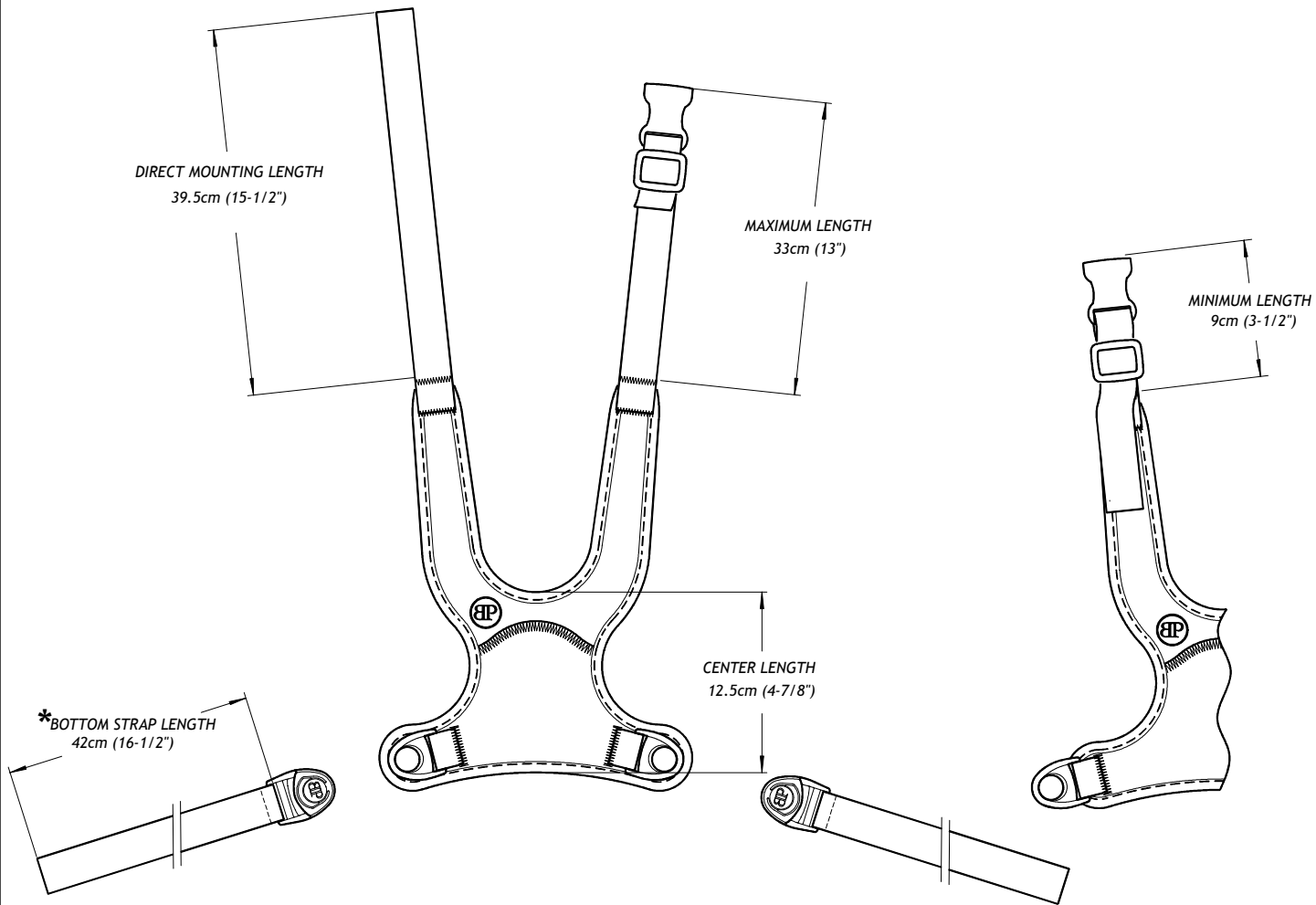
**note**

REPLACEMENT BOTTOM STRAP * FOR ALL STAYFLEX SIZES		
SH303XL	FITS BODYPOINT SWIVEL BUCKLE ALL STAYFLEX SOLD AFTER FALL 2013	62cm (24-1/2") LONG

**description**

**STAYFLEX™ CHEST SUPPORT, REAR-PULL, X-SMALL, TECHNICAL SPECS**

drawing no. <b>D11-0831-30</b>	date originated 8/31/2011	drawn by D. HAGAN	rev. <b>D</b>
-----------------------------------	------------------------------	----------------------	------------------



note

description

STAYFLEX™ CHEST SUPPORT, REAR-PULL, X-SMALL, TECHNICAL SPECS

drawing no.

D11-0831-30

date originated

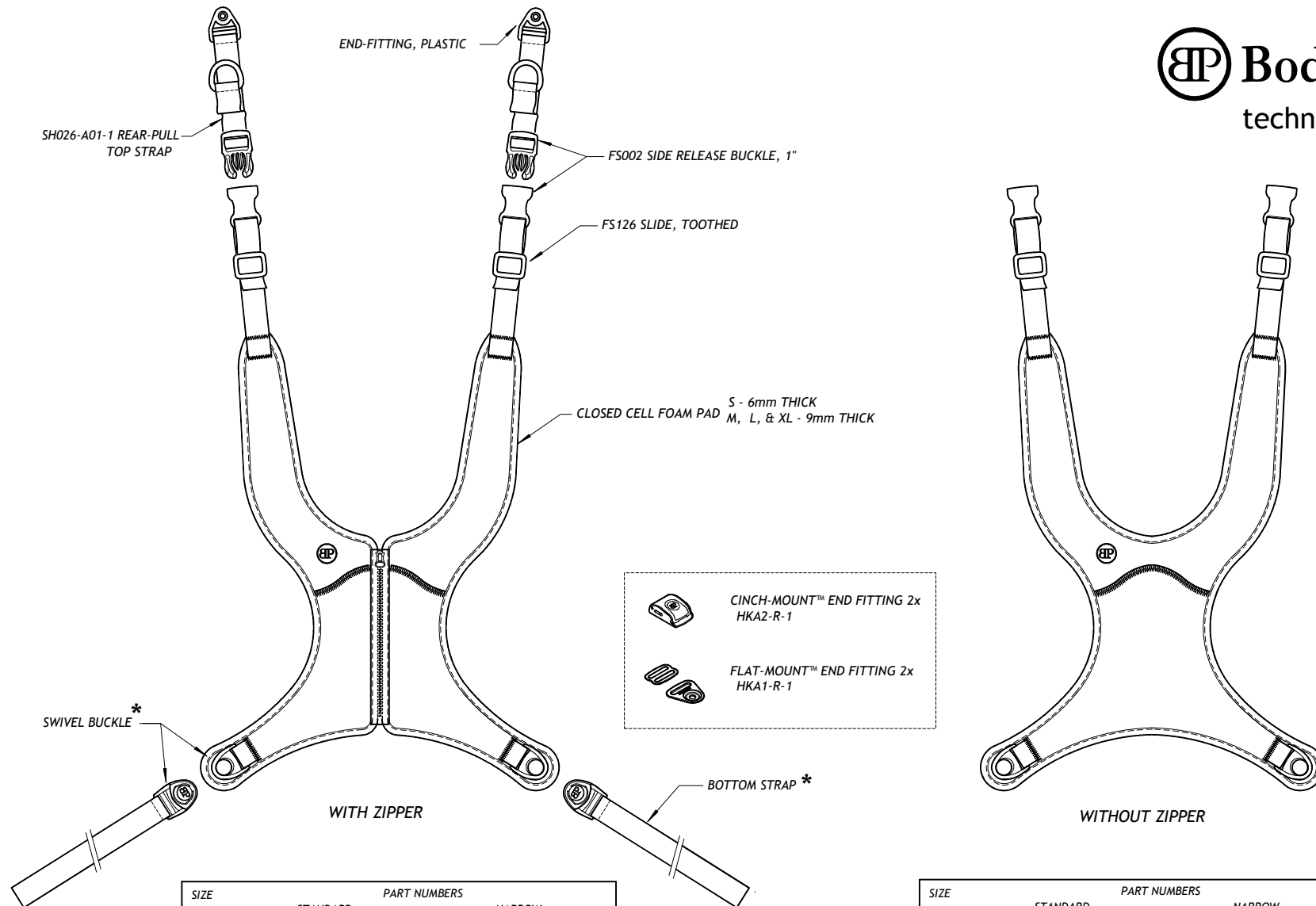
8/31/2011

drawn by

D. HAGAN

rev.

**D**



SIZE	PART NUMBERS			
	STANDARD CINCH-MOUNT™	FLAT-MOUNT™	NARROW CINCH-MOUNT™	FLAT-MOUNT™
SMALL	SH320S-B2	SH320S-B1	----	----
MEDIUM	SH320M-B2	SH320M-B1	SH340M-B2	SH340M-B1
LARGE	SH320L-B2	SH320L-B1	SH340L-B2	SH340L-B1
X-LARGE	SH320XL-B2	SH320XL-B1	SH340XL-B2	SH340XL-B1

SIZE	PART NUMBERS			
	STANDARD CINCH-MOUNT™	FLAT-MOUNT™	NARROW CINCH-MOUNT™	FLAT-MOUNT™
SMALL	SH321S-B2	SH321S-B1	----	----
MEDIUM	SH321M-B2	SH321M-B1	SH341M-B2	SH341M-B1
LARGE	SH321L-B2	SH321L-B1	SH341L-B2	SH341L-B1
X-LARGE	SH321XL-B2	SH321XL-B1	SH341XL-B2	SH341XL-B1

SHEET 1 of 2

note

REPLACEMENT BOTTOM STRAP * FOR ALL STAYFLEX SIZES		
SH303XL	FITS BODYPOINT SWIVEL BUCKLE ALL STAYFLEX SOLD AFTER FALL 2013	62cm (24-1/2") LONG

description  
**STAYFLEX™ CHEST SUPPORT, REAR-PULL, TECHNICAL SPECS**

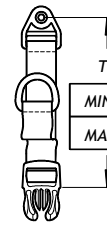
drawing no. <b>D11-0825-30</b>	date originated 8/25/2011	drawn by D. HAGAN	rev. <b>E</b>
-----------------------------------	------------------------------	----------------------	------------------

DIRECT MOUNTING LENGTH

SMALL	40.5cm (16")
MEDIUM	40.5cm (16")
LARGE	45.5cm (18")
X-LARGE	45.5cm (18")

MAXIMUM LENGTH

SMALL	32cm (12-1/2")
MEDIUM	32cm (12-1/2")
LARGE	37cm (14-1/2")
X-LARGE	37cm (14-1/2")



TOP STRAP RANGE

MINIMUM	5.5cm (2-1/4")
MAXIMUM	19cm (7-1/2")

MINIMUM LENGTH  
9cm (3-1/2")  
ALL SIZES

BOTTOM STRAP LENGTH \*

SMALL	47cm (18-1/2")
MEDIUM	52cm (20")
LARGE	57cm (22-1/2")
X-LARGE	62cm (24-1/2")

ZIPPER LENGTH

SMALL	11.5cm (4-1/2")
MEDIUM	15cm (6")
LARGE	19cm (7-1/2")
X-LARGE	23cm (9")

CENTER LENGTH

SMALL	14.5cm (5-3/4")
MEDIUM	18.5cm (7-1/4")
LARGE	22cm (8-3/4")
X-LARGE	26cm (10-1/4")

WITH ZIPPER

WITHOUT ZIPPER

note

description

**STAYFLEX™ CHEST SUPPORT, REAR-PULL, TECHNICAL SPECS**

drawing no.

**D11-0825-30**

date originated

8/25/2011

drawn by

D. HAGAN

rev.

**E**