



**BRODA**<sup>®</sup>  
*Comfort is Essential*

**SASHAY**  
PEDAL CHAIR

## ENHANCED MOBILITY AND FREEDOM

Ergonomically designed, the Pedal Chair enables patients to self-propel with their hands or feet. Increasing mobility and independence.



- 1 INFINITELY ADJUSTABLE SEAT TILT
- 2 HEIGHT ADJUSTABLE ARMRESTS
- 3 ADJUSTABLE SEAT TO FLOOR HEIGHT
- 4 REMOVABLE WINGS FOR UPPER LATERAL SUPPORT
- 5 TOTAL LOCKING CASTERS

### PATIENT BENEFITS



Posterior tilt improves posture, redistributes pressure and aids in fall prevention.



Height adjustable armrests and upper lateral supports provide enhanced postural stability.



Front pivot seat tilt enhances visual orientation, and encourages self-mobility with proper foot on floor positioning.



Optional front mount mag wheels facilitate hand propulsion allowing patients to socialize and engage in their surroundings.

### CAREGIVER AND FACILITY BENEFITS

- Provides supportive stable positioning
- Aids in the maintenance of skin integrity
- Tilt provides ease of use for frequent re-positioning
- Design provides safety and stability helping to reduce risk of injury
- Provides stimulation and contentment - excellent for memory care

## COMFORT TENSION SEATING® PROVIDES

- Long term seating comfort
- Conforming support for proper pelvic positioning
- Improved air flow, decreasing heat and moisture build up
- Pressure redistribution that aids in maintaining skin integrity
- Accommodation for conditions such as kyphosis and lordosis
- Decreased pressure, improved blood flow and oxygenation of the tissue



CTS Strapping flexes for individualized fit & superior comfort.

## SPECIFICATIONS

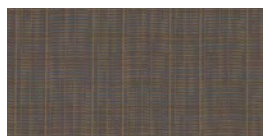
Frame	16 Gauge tubular steel frame
Seat & Backrest	BRODA Comfort Tension Seating®
Degrees of Tilt	18°
Mag Wheel Option	20" or 22" Front or rear mount (50cm or 55cm)
Standard Seat Width	16", 18", 20" (40cm, 45cm, 50cm)
Custom Seat Width	22", 24", 26", 28" (55cm, 60cm, 65cm, 70cm)
Standard Seat Depth	17", 18.5" (43cm, 46cm)
Custom Seat Depth	15.5", 20" (39cm, 50cm)
Seat Height	Adjustable 12.5" to 17.5"
Front Casters	5" Front total lock (12.5cm)
Rear Casters	5" Fixed (12.5kg)
Weight Capacity	350 lbs. / 159kg
Standard Padding	Headrest cushion, shoulder bolsters, lower side pads, seat and back pad with cover
HCPCS*	E1031
ADP Device Code*	WMA5B-005

\* Specific configurations apply. Consult your Rep for details

## COMMON ACCESSORIES

- Swing away footrests
- Elevating swing away legrests
- Solid or clear tray
- Padded tray cover
- Aluminum front casters
- Half tray
- Thigh belt
- Full wrap vinyl seat and back covers
- BRODA app (additional positioning package)

## UPHOLSTERY OPTIONS



INTERLACE  
ESPRESSO



RENAISSANCE  
BURGUNDY



RENAISSANCE  
CHARCOAL



SILVERTEX  
SAPPHIRE BLUE

## FRAME OPTIONS



GREY  
HAMMER



BLACK

