

ACTA-EMBRACE™ ORDER FORM



HCPCS CODING: E2607/E2608
SKIN PROTECTION & POSITIONING SEAT CUSHION

Company Name/ACCT #: _____
 P.O. Number: _____
 Requested By: _____
 Phone: _____ Fax: _____
 Email: _____
 Ship To: _____
 Patient Reference: _____

Acta-Embrace™ Zero Elevation
shown with GlideWear®



Acta-Embrace™ Anti-Thrust



1 SIZE & STYLE

ZERO ELEVATION

Please select size in the appropriate fabric chart below.

COMFORT-TEK™
 SELECTED FOR INCONTINENCE PROTECTION & AN EASILY CLEANED SURFACE.



STRETCH-AIR™
 SELECTED FOR AIR TRANSMISSION & HEAT DISSIPATION.

		COMFORT-TEK™																			
		\$352.00										\$428.00									
DEPTH	24"											EM-FZ-1824	EM-FZ-1924	EM-FZ-2024	EM-FZ-2124	EM-FZ-2224	EM-FZ-2324	EM-FZ-2424			
	23"											EM-FZ-1823	EM-FZ-1923	EM-FZ-2023	EM-FZ-2123	EM-FZ-2223	EM-FZ-2323	EM-FZ-2423			
	22"																				
	21"										EM-FZ-1622	EM-FZ-1722	EM-FZ-1822	EM-FZ-1922	EM-FZ-2022	EM-FZ-2122	EM-FZ-2222	EM-FZ-2322	EM-FZ-2422		
	20"										EM-FZ-1420	EM-FZ-1520	EM-FZ-1620	EM-FZ-1720	EM-FZ-1820	EM-FZ-1920	EM-FZ-2020	EM-FZ-2120	EM-FZ-2220	EM-FZ-2320	EM-FZ-2420
	19"										EM-FZ-1419	EM-FZ-1519	EM-FZ-1619	EM-FZ-1719	EM-FZ-1819	EM-FZ-1919	EM-FZ-2019	EM-FZ-2119	EM-FZ-2219	EM-FZ-2319	EM-FZ-2419
	18"				EM-FZ-1218	EM-FZ-1318	EM-FZ-1418	EM-FZ-1518	EM-FZ-1618	EM-FZ-1718	EM-FZ-1818	EM-FZ-1918	EM-FZ-2018	EM-FZ-2118	EM-FZ-2218	EM-FZ-2318	EM-FZ-2418				
	17"																				
	16"			EM-FZ-1117	EM-FZ-1217	EM-FZ-1317	EM-FZ-1417	EM-FZ-1517	EM-FZ-1617	EM-FZ-1717	EM-FZ-1817	EM-FZ-1917	EM-FZ-2017	EM-FZ-2117	EM-FZ-2217	EM-FZ-2317	EM-FZ-2417				
	15"	EM-FZ-1016	EM-FZ-1116	EM-FZ-1216	EM-FZ-1316	EM-FZ-1416	EM-FZ-1516	EM-FZ-1616	EM-FZ-1716	EM-FZ-1816	EM-FZ-1916	EM-FZ-2016	EM-FZ-2116	EM-FZ-2216	EM-FZ-2316	EM-FZ-2416					
	14"	EM-FZ-1015	EM-FZ-1115	EM-FZ-1215	EM-FZ-1315	EM-FZ-1415	EM-FZ-1515	EM-FZ-1615	EM-FZ-1715	EM-FZ-1815	EM-FZ-1915	EM-FZ-2015									
13"	EM-FZ-1014	EM-FZ-1114	EM-FZ-1214	EM-FZ-1314	EM-FZ-1414	EM-FZ-1514	EM-FZ-1614	EM-FZ-1714	EM-FZ-1814	EM-FZ-1914											
12"	EM-FZ-1013	EM-FZ-1113	EM-FZ-1213	EM-FZ-1313	EM-FZ-1413	EM-FZ-1513	EM-FZ-1613	EM-FZ-1713													
11"	EM-FZ-1012	EM-FZ-1112	EM-FZ-1212	EM-FZ-1312	EM-FZ-1412	EM-FZ-1512	EM-FZ-1612	EM-FZ-1712													
10"	EM-FZ-1011	EM-FZ-1111	EM-FZ-1211	EM-FZ-1311	EM-FZ-1411	EM-FZ-1511															
	EM-FZ-1010	EM-FZ-1110	EM-FZ-1210	EM-FZ-1310	EM-FZ-1410	EM-FZ-1510															
		10"	11"	12"	13"	14"	15"	16"	17"	18"	19"	20"	21"	22"	23"	24"					

		STRETCH-AIR™																				
		\$352.00										\$428.00										
DEPTH	24"											EM-SZ-1824	EM-SZ-1924	EM-SZ-2024	EM-SZ-2124	EM-SZ-2224	EM-SZ-2324	EM-SZ-2424				
	23"											EM-SZ-1823	EM-SZ-1923	EM-SZ-2023	EM-SZ-2123	EM-SZ-2223	EM-SZ-2323	EM-SZ-2423				
	22"																					
	21"											EM-SZ-1622	EM-SZ-1722	EM-SZ-1822	EM-SZ-1922	EM-SZ-2022	EM-SZ-2122	EM-SZ-2222	EM-SZ-2322	EM-SZ-2422		
	20"											EM-SZ-1420	EM-SZ-1520	EM-SZ-1620	EM-SZ-1720	EM-SZ-1820	EM-SZ-1920	EM-SZ-2020	EM-SZ-2120	EM-SZ-2220	EM-SZ-2320	EM-SZ-2420
	19"											EM-SZ-1419	EM-SZ-1519	EM-SZ-1619	EM-SZ-1719	EM-SZ-1819	EM-SZ-1919	EM-SZ-2019	EM-SZ-2119	EM-SZ-2219	EM-SZ-2319	EM-SZ-2419
	18"				EM-SZ-1218	EM-SZ-1318	EM-SZ-1418	EM-SZ-1518	EM-SZ-1618	EM-SZ-1718	EM-SZ-1818	EM-SZ-1918	EM-SZ-2018	EM-SZ-2118	EM-SZ-2218	EM-SZ-2318	EM-SZ-2418					
	17"																					
	16"			EM-SZ-1117	EM-SZ-1217	EM-SZ-1317	EM-SZ-1417	EM-SZ-1517	EM-SZ-1617	EM-SZ-1717	EM-SZ-1817	EM-SZ-1917	EM-SZ-2017	EM-SZ-2117	EM-SZ-2217	EM-SZ-2317	EM-SZ-2417					
	15"	EM-SZ-1016	EM-SZ-1116	EM-SZ-1216	EM-SZ-1316	EM-SZ-1416	EM-SZ-1516	EM-SZ-1616	EM-SZ-1716	EM-SZ-1816	EM-SZ-1916	EM-SZ-2016	EM-SZ-2116	EM-SZ-2216	EM-SZ-2316	EM-SZ-2416						
	14"	EM-SZ-1015	EM-SZ-1115	EM-SZ-1215	EM-SZ-1315	EM-SZ-1415	EM-SZ-1515	EM-SZ-1615	EM-SZ-1715	EM-SZ-1815	EM-SZ-1915	EM-SZ-2015										
13"	EM-SZ-1014	EM-SZ-1114	EM-SZ-1214	EM-SZ-1314	EM-SZ-1414	EM-SZ-1514	EM-SZ-1614	EM-SZ-1714	EM-SZ-1814	EM-SZ-1914												
12"	EM-SZ-1013	EM-SZ-1113	EM-SZ-1213	EM-SZ-1313	EM-SZ-1413	EM-SZ-1513	EM-SZ-1613	EM-SZ-1713														
11"	EM-SZ-1012	EM-SZ-1112	EM-SZ-1212	EM-SZ-1312	EM-SZ-1412	EM-SZ-1512	EM-SZ-1612	EM-SZ-1712														
10"	EM-SZ-1011	EM-SZ-1111	EM-SZ-1211	EM-SZ-1311	EM-SZ-1411	EM-SZ-1511																
	EM-SZ-1010	EM-SZ-1110	EM-SZ-1210	EM-SZ-1310	EM-SZ-1410	EM-SZ-1510																
		10"	11"	12"	13"	14"	15"	16"	17"	18"	19"	20"	21"	22"	23"	24"						

GLIDEWEAR® is designed to promote healing as well as reduce the risk of skin breakdown. A GlideWear® Shear Reduction Panel is incorporated into the cover under the most at-risk areas to allow for micro-movements without the deformation of tissue.

U.S. GLIDEWEAR® Patent No. 8,646,459

COMFORT-TEK™
 SELECTED FOR INCONTINENCE PROTECTION
 & AN EASILY CLEANED SURFACE.

OR

STRETCH-AIR™
 SELECTED FOR AIR TRANSMISSION
 & HEAT DISSIPATION.

ACTA-EMBRACE-SS-ORDER REV0316

ZERO ELEVATION WITH

Please select size in the appropriate fabric chart below.

COMFORT-TEK™ with GLIDEWEAR®

\$389.30 **\$465.32**

DEPTH	24"											EM-FQZ-1824	EM-FQZ-1924	EM-FQZ-2024	EM-FQZ-2124	EM-FQZ-2224	EM-FQZ-2324	EM-FQZ-2424	
	23"											EM-FQZ-1823	EM-FQZ-1923	EM-FQZ-2023	EM-FQZ-2123	EM-FQZ-2223	EM-FQZ-2323	EM-FQZ-2423	
22"																			
21"																			
20"																			
19"																			
18"																			
17"																			
16"		EM-FQZ-1016	EM-FQZ-1116	EM-FQZ-1216	EM-FQZ-1316	EM-FQZ-1416	EM-FQZ-1516	EM-FQZ-1616	EM-FQZ-1716	EM-FQZ-1816	EM-FQZ-1916	EM-FQZ-2016	EM-FQZ-2116	EM-FQZ-2216	EM-FQZ-2316	EM-FQZ-2416			
15"		EM-FQZ-1015	EM-FQZ-1115	EM-FQZ-1215	EM-FQZ-1315	EM-FQZ-1415	EM-FQZ-1515	EM-FQZ-1615	EM-FQZ-1715	EM-FQZ-1815	EM-FQZ-1915	EM-FQZ-2015							
14"		EM-FQZ-1014	EM-FQZ-1114	EM-FQZ-1214	EM-FQZ-1314	EM-FQZ-1414	EM-FQZ-1514	EM-FQZ-1614	EM-FQZ-1714	EM-FQZ-1814	EM-FQZ-1914								
13"		EM-FQZ-1013	EM-FQZ-1113	EM-FQZ-1213	EM-FQZ-1313	EM-FQZ-1413	EM-FQZ-1513	EM-FQZ-1613	EM-FQZ-1713										
12"		EM-FQZ-1012	EM-FQZ-1112	EM-FQZ-1212	EM-FQZ-1312	EM-FQZ-1412	EM-FQZ-1512	EM-FQZ-1612	EM-FQZ-1712										
11"		EM-FQZ-1011	EM-FQZ-1111	EM-FQZ-1211	EM-FQZ-1311	EM-FQZ-1411	EM-FQZ-1511												
10"		EM-FQZ-1010	EM-FQZ-1110	EM-FQZ-1210	EM-FQZ-1310	EM-FQZ-1410	EM-FQZ-1510												
		10"	11"	12"	13"	14"	15"	16"	17"	18"	19"	20"	21"	22"	23"	24"			
		WIDTH																	

STRETCH-AIR™ with GLIDEWEAR®

\$389.30 **\$465.32**

DEPTH	24"											EM-SQZ-1824	EM-SQZ-1924	EM-SQZ-2024	EM-SQZ-2124	EM-SQZ-2224	EM-SQZ-2324	EM-SQZ-2424	
	23"																		
22"																			
21"																			
20"																			
19"																			
18"																			
17"																			
16"		EM-SQZ-1016	EM-SQZ-1116	EM-SQZ-1216	EM-SQZ-1316	EM-SQZ-1416	EM-SQZ-1516	EM-SQZ-1616	EM-SQZ-1716	EM-SQZ-1816	EM-SQZ-1916	EM-SQZ-2016	EM-SQZ-2116	EM-SQZ-2216	EM-SQZ-2316	EM-SQZ-2416			
15"		EM-SQZ-1015	EM-SQZ-1115	EM-SQZ-1215	EM-SQZ-1315	EM-SQZ-1415	EM-SQZ-1515	EM-SQZ-1615	EM-SQZ-1715	EM-SQZ-1815	EM-SQZ-1915	EM-SQZ-2015							
14"		EM-SQZ-1014	EM-SQZ-1114	EM-SQZ-1214	EM-SQZ-1314	EM-SQZ-1414	EM-SQZ-1514	EM-SQZ-1614	EM-SQZ-1714	EM-SQZ-1814	EM-SQZ-1914								
13"		EM-SQZ-1013	EM-SQZ-1113	EM-SQZ-1213	EM-SQZ-1313	EM-SQZ-1413	EM-SQZ-1513	EM-SQZ-1613	EM-SQZ-1713										
12"		EM-SQZ-1012	EM-SQZ-1112	EM-SQZ-1212	EM-SQZ-1312	EM-SQZ-1412	EM-SQZ-1512	EM-SQZ-1612	EM-SQZ-1712										
11"		EM-SQZ-1011	EM-SQZ-1111	EM-SQZ-1211	EM-SQZ-1311	EM-SQZ-1411	EM-SQZ-1511												
10"		EM-SQZ-1010	EM-SQZ-1110	EM-SQZ-1210	EM-SQZ-1310	EM-SQZ-1410	EM-SQZ-1510												
		10"	11"	12"	13"	14"	15"	16"	17"	18"	19"	20"	21"	22"	23"	24"			
		WIDTH																	

COMFORT-TEK™
 SELECTED FOR INCONTINENCE PROTECTION
 & AN EASILY CLEANED SURFACE.

OR

STRETCH-AIR™
 SELECTED FOR AIR TRANSMISSION
 & HEAT DISSIPATION.

ACTA-EMBRACE-SS-ORDER REV0316

ANTI-THRUST

Please select size in the appropriate fabric chart below.

		COMFORT-TEK™																	
		\$352.00											\$428.00						
DEPTH	24"												EM-FA-1824	EM-FA-1924	EM-FA-2024	EM-FA-2124	EM-FA-2224	EM-FA-2324	EM-FA-2424
	23"												EM-FA-1823	EM-FA-1923	EM-FA-2023	EM-FA-2123	EM-FA-2223	EM-FA-2323	EM-FA-2423
	22"																		
	21"																		
	20"																		
	19"																		
	18"																		
	17"																		
	16"																		
	15"																		
	14"																		
13"																			
12"																			
11"																			
10"																			
		10"	11"	12"	13"	14"	15"	16"	17"	18"	19"	20"	21"	22"	23"	24"			
		WIDTH																	

		STRETCH-AIR™																	
		\$352.00											\$428.00						
DEPTH	24"												EM-SA-1824	EM-SA-1924	EM-SA-2024	EM-SA-2124	EM-SA-2224	EM-SA-2324	EM-SA-2424
	23"												EM-SA-1823	EM-SA-1923	EM-SA-2023	EM-SA-2123	EM-SA-2223	EM-SA-2323	EM-SA-2423
	22"																		
	21"																		
	20"																		
	19"																		
	18"																		
	17"																		
	16"																		
	15"																		
	14"																		
13"																			
12"																			
11"																			
10"																			
		10"	11"	12"	13"	14"	15"	16"	17"	18"	19"	20"	21"	22"	23"	24"			
		WIDTH																	

GLIDEWEAR® is designed to promote healing as well as reduce the risk of skin breakdown. A GlideWear® Shear Reduction Panel is incorporated into the cover under the most at-risk areas to allow for micro-movements without the deformation of tissue.

U.S. GLIDEWEAR® Patent No. 8,646,459

COMFORT-TEK™
 SELECTED FOR INCONTINENCE PROTECTION
 & AN EASILY CLEANED SURFACE.

OR

STRETCH-AIR™
 SELECTED FOR AIR TRANSMISSION
 & HEAT DISSIPATION.

ACTA-EMBRACE-SS-ORDER REV0316

ANTI-THRUST WITH GLIDEWEAR.

Please select size in the appropriate fabric chart below.

COMFORT-TEK™ with GLIDEWEAR®

← \$389.30 → ← \$465.32 →

DEPTH	24"									EM-FQA-1824	EM-FQA-1924	EM-FQA-2024	EM-FQA-2124	EM-FQA-2224	EM-FQA-2324	EM-FQA-2424
	23"									EM-FQA-1823	EM-FQA-1923	EM-FQA-2023	EM-FQA-2123	EM-FQA-2223	EM-FQA-2323	EM-FQA-2423
22"								EM-FQA-1622	EM-FQA-1722	EM-FQA-1822	EM-FQA-1922	EM-FQA-2022	EM-FQA-2122	EM-FQA-2222	EM-FQA-2322	EM-FQA-2422
21"							EM-FQA-1521	EM-FQA-1621	EM-FQA-1721	EM-FQA-1821	EM-FQA-1921	EM-FQA-2021	EM-FQA-2121	EM-FQA-2221	EM-FQA-2321	EM-FQA-2421
20"					EM-FQA-1420	EM-FQA-1520	EM-FQA-1620	EM-FQA-1720	EM-FQA-1820	EM-FQA-1920	EM-FQA-2020	EM-FQA-2120	EM-FQA-2220	EM-FQA-2320	EM-FQA-2420	
19"					EM-FQA-1419	EM-FQA-1519	EM-FQA-1619	EM-FQA-1719	EM-FQA-1819	EM-FQA-1919	EM-FQA-2019	EM-FQA-2119	EM-FQA-2219	EM-FQA-2319	EM-FQA-2419	
18"			EM-FQA-1218	EM-FQA-1318	EM-FQA-1418	EM-FQA-1518	EM-FQA-1618	EM-FQA-1718	EM-FQA-1818	EM-FQA-1918	EM-FQA-2018	EM-FQA-2118	EM-FQA-2218	EM-FQA-2318	EM-FQA-2418	
17"		EM-FQA-1117	EM-FQA-1217	EM-FQA-1317	EM-FQA-1417	EM-FQA-1517	EM-FQA-1617	EM-FQA-1717	EM-FQA-1817	EM-FQA-1917	EM-FQA-2017	EM-FQA-2117	EM-FQA-2217	EM-FQA-2317	EM-FQA-2417	
16"	EM-FQA-1016	EM-FQA-1116	EM-FQA-1216	EM-FQA-1316	EM-FQA-1416	EM-FQA-1516	EM-FQA-1616	EM-FQA-1716	EM-FQA-1816	EM-FQA-1916	EM-FQA-2016	EM-FQA-2116	EM-FQA-2216	EM-FQA-2316	EM-FQA-2416	
15"	EM-FQA-1015	EM-FQA-1115	EM-FQA-1215	EM-FQA-1315	EM-FQA-1415	EM-FQA-1515	EM-FQA-1615	EM-FQA-1715	EM-FQA-1815	EM-FQA-1915	EM-FQA-2015					
14"	EM-FQA-1014	EM-FQA-1114	EM-FQA-1214	EM-FQA-1314	EM-FQA-1414	EM-FQA-1514	EM-FQA-1614	EM-FQA-1714	EM-FQA-1814	EM-FQA-1914						
13"	EM-FQA-1013	EM-FQA-1113	EM-FQA-1213	EM-FQA-1313	EM-FQA-1413	EM-FQA-1513	EM-FQA-1613	EM-FQA-1713								
12"	EM-FQA-1012	EM-FQA-1112	EM-FQA-1212	EM-FQA-1312	EM-FQA-1412	EM-FQA-1512	EM-FQA-1612	EM-FQA-1712								
11"	EM-FQA-1011	EM-FQA-1111	EM-FQA-1211	EM-FQA-1311	EM-FQA-1411	EM-FQA-1511										
10"	EM-FQA-1010	EM-FQA-1110	EM-FQA-1210	EM-FQA-1310	EM-FQA-1410	EM-FQA-1510										
		10"	11"	12"	13"	14"	15"	16"	17"	18"	19"	20"	21"	22"	23"	24"
		WIDTH														

STRETCH-AIR™ with GLIDEWEAR®

← \$389.30 → ← \$465.32 →

DEPTH	24"									EM-SQA-1824	EM-SQA-1924	EM-SQA-2024	EM-SQA-2124	EM-SQA-2224	EM-SQA-2324	EM-SQA-2424
	23"									EM-SQA-1823	EM-SQA-1923	EM-SQA-2023	EM-SQA-2123	EM-SQA-2223	EM-SQA-2323	EM-SQA-2423
22"										EM-SQA-1622	EM-SQA-1722	EM-SQA-1822	EM-SQA-1922	EM-SQA-2022	EM-SQA-2122	EM-SQA-2222
21"								EM-SQA-1521	EM-SQA-1621	EM-SQA-1721	EM-SQA-1821	EM-SQA-1921	EM-SQA-2021	EM-SQA-2121	EM-SQA-2221	EM-SQA-2321
20"					EM-SQA-1420	EM-SQA-1520	EM-SQA-1620	EM-SQA-1720	EM-SQA-1820	EM-SQA-1920	EM-SQA-2020	EM-SQA-2120	EM-SQA-2220	EM-SQA-2320	EM-SQA-2420	
19"					EM-SQA-1419	EM-SQA-1519	EM-SQA-1619	EM-SQA-1719	EM-SQA-1819	EM-SQA-1919	EM-SQA-2019	EM-SQA-2119	EM-SQA-2219	EM-SQA-2319	EM-SQA-2419	
18"			EM-SQA-1218	EM-SQA-1318	EM-SQA-1418	EM-SQA-1518	EM-SQA-1618	EM-SQA-1718	EM-SQA-1818	EM-SQA-1918	EM-SQA-2018	EM-SQA-2118	EM-SQA-2218	EM-SQA-2318	EM-SQA-2418	
17"		EM-SQA-1117	EM-SQA-1217	EM-SQA-1317	EM-SQA-1417	EM-SQA-1517	EM-SQA-1617	EM-SQA-1717	EM-SQA-1817	EM-SQA-1917	EM-SQA-2017	EM-SQA-2117	EM-SQA-2217	EM-SQA-2317	EM-SQA-2417	
16"	EM-SQA-1016	EM-SQA-1116	EM-SQA-1216	EM-SQA-1316	EM-SQA-1416	EM-SQA-1516	EM-SQA-1616	EM-SQA-1716	EM-SQA-1816	EM-SQA-1916	EM-SQA-2016	EM-SQA-2116	EM-SQA-2216	EM-SQA-2316	EM-SQA-2416	
15"	EM-SQA-1015	EM-SQA-1115	EM-SQA-1215	EM-SQA-1315	EM-SQA-1415	EM-SQA-1515	EM-SQA-1615	EM-SQA-1715	EM-SQA-1815	EM-SQA-1915	EM-SQA-2015					
14"	EM-SQA-1014	EM-SQA-1114	EM-SQA-1214	EM-SQA-1314	EM-SQA-1414	EM-SQA-1514	EM-SQA-1614	EM-SQA-1714	EM-SQA-1814	EM-SQA-1914						
13"	EM-SQA-1013	EM-SQA-1113	EM-SQA-1213	EM-SQA-1313	EM-SQA-1413	EM-SQA-1513	EM-SQA-1613	EM-SQA-1713								
12"	EM-SQA-1012	EM-SQA-1112	EM-SQA-1212	EM-SQA-1312	EM-SQA-1412	EM-SQA-1512	EM-SQA-1612	EM-SQA-1712								
11"	EM-SQA-1011	EM-SQA-1111	EM-SQA-1211	EM-SQA-1311	EM-SQA-1411	EM-SQA-1511										
10"	EM-SQA-1010	EM-SQA-1110	EM-SQA-1210	EM-SQA-1310	EM-SQA-1410	EM-SQA-1510										
		10"	11"	12"	13"	14"	15"	16"	17"	18"	19"	20"	21"	22"	23"	24"
		WIDTH														

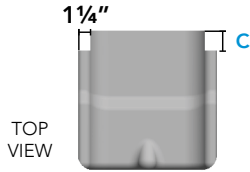
2 ACTA-EMBRACE™ ACCESSORIES

*All accessories are cosmetic changes to the cushion except for options in gray, which are add on items.

2.1 GROWTH NOTCHES MSRP \$0.00

If growth notches are selected, a 1¼" wide cut will be taken from each side to allow the cushion to fit between the chair canes.

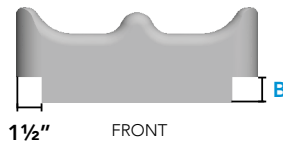
DEPTH OF NOTCHES



C = 1" D (GROWTH-NOTCH-1)
C = 2" D (GROWTH-NOTCH-2)
C = 3" D (GROWTH-NOTCH-3)
C = Other _____ (GROWTH-NOTCH-OTHER)

2.2 RAIL CUTS MSRP \$25.00

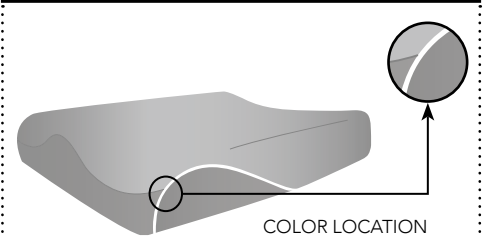
A standard 1 1/2" wide cut will be made and you decide how high the cut will need to be. All cuts run the entire depth of the cushion.



B = 1" Rail Cut (RAIL-CUT-1.0)
B = 1½" Rail Cut (RAIL-CUT-1.5)
B = 2" Rail Cut (RAIL-CUT-2.0)

2.3 COLOR - COMES STANDARD SILVER REFLECTIVE PIPING MSRP \$25.00

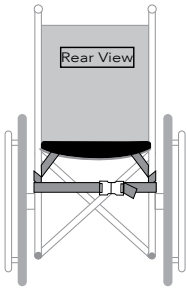
Accent colors can be applied to the cushion via colored piping. If no colors are selected, our standard silver reflective piping is used.



Red (RED)	Blue (BLUE)
Purple (PURPLE)	Green (GREEN)
Pink (PINK)	Remove (REMOVE)

2.4 KWIK STRAP® MSRP \$15.00

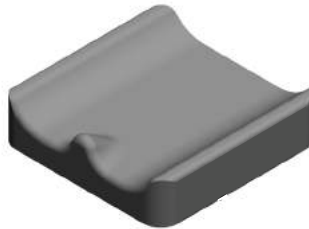
Kwik Strap® provides extra security. Kwik Strap® is connected to the bottom of the cushion via hook & loop attachment and wraps around vertical canes to secure the cushion to wheelchair during transfers.



Kwik Strap®
(KWIK-STRAP)

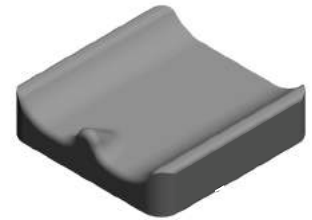
2.5 INCONTINENCE LINER MSRP One = \$58.00 - Two = \$116.00

Liner provides extra incontinence protection for the cushion.



One Extra Incontinence Liner (INCON-LINER)
Two Extra Incontinence Liners (INCON-LINER)

2.6 EXTRA COVER MSRP One = \$60.00 - Two = \$120.00



One Extra Stretch Air Outer Cover (X-STRETCH-AIR-CV)
Two Extra Stretch Air Outer Cover (2X-STRETCH-AIR-CV)
One Extra Comfort Tek Outer Cover (X-COMFORT-TEK-CV)
Two Extra Comfort Tek Outer Cover (2X-COMFORT-TEK-CV)

2.7 REMOVABLE SOLID SEAT PAN & HARDWARE KIT HCPCS Code: E2231 MSRP \$375.00

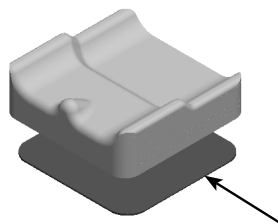
The solid seat pan kit includes a slotted aluminum pan and attaching hardware to accommodate 7/8" or 1" tubing. The kit also comes with two different cross bars to accommodate various wheelchair frame types. This will fit both folding and non-folding seat rails. Lateral trunk supports can be easily attached.



Solid Seat Pan & Hardware Kit
(RSSP-N-HARD)

2.8 RIGID INSERT HCPCS Code: E0992 MSRP \$63.00

3/16" Plastic rigidizing board.



Rigid Insert Glued (RGD-INSERT-GLUED)
Rigid Insert Not Glued (RGD-INSERT-UNGLUED)

3 LATERAL THIGH SUPPORTS & HARDWARE

3.1 LATERAL THIGH SUPPORT PADS

HCPCS Code: E0956 (OPTIONAL)

*Length (L) refers to the actual size dimension of the support from bottom to top edge.

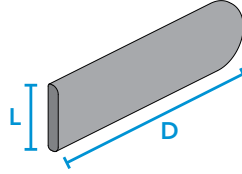
INSTRUCTIONS:

- Select a left and/or right lateral pad using any combination of style, size and fabric.

NOTE:

T-Nut spacing along hip guide is 1" on center running the entire length of the pad.

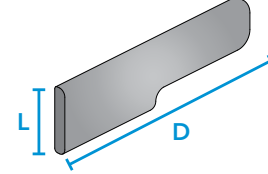
RIGID
MSRP \$50.00/ea



STRETCH-AIR FABRIC				
Extra L	Left	SIZE	Right	Extra R
(HG1-RS3H4D)		3" L x 4" D		(HG1-RS3H4D)
(HG1-RS3H5D)		3" L x 5" D		(HG1-RS3H5D)
(HG1-RS4H4D)		4" L x 4" D		(HG1-RS4H4D)
(HG1-RS4H6D)		4" L x 6" D		(HG1-RS4H6D)
(HG1-RS4H8D)		4" L x 8" D		(HG1-RS4H8D)
(HG1-RS4H10D)		4" L x 10" D		(HG1-RS4H10D)
(HG1-RS4H12D)		4" L x 12" D		(HG1-RS4H12D)
(HG1-RS4H14D)		4" L x 14" D		(HG1-RS4H14D)
(HG1-RS4H16D)		4" L x 16" D		(HG1-RS4H16D)

- OR -

RIGID CONTOURED
for Anti-Thrust Cushion
MSRP \$50.00/ea



STRETCH-AIR FABRIC				
Extra L	Left	SIZE	Right	Extra R
(HG1-RS3H4D-AL)		3" L x 4" D		(HG1-RS3H4D-AR)
(HG1-RS3H5D-AL)		3" L x 5" D		(HG1-RS3H5D-AR)
(HG1-RS4H4D-AL)		4" L x 4" D		(HG1-RS4H4D-AR)
(HG1-RS4H6D-AL)		4" L x 6" D		(HG1-RS4H6D-AR)
(HG1-RS4H8D-AL)		4" L x 8" D		(HG1-RS4H8D-AR)
(HG1-RS4H10D-AL)		4" L x 10" D		(HG1-RS4H10D-AR)
(HG1-RS4H12D-AL)		4" L x 12" D		(HG1-RS4H12D-AR)
(HG1-RS4H14D-AL)		4" L x 14" D		(HG1-RS4H14D-AR)
(HG1-RS4H16D-AL)		4" L x 16" D		(HG1-RS4H16D-AR)

- OR -

STRETCH-AIR
SELECTED FOR AIR TRANSMISSION & HEAT DISSIPATION.

COMFORT-TEK
SELECTED FOR INCONTINENCE PROTECTION & AN EASILY CLEANED SURFACE.

COMFORT-TEK FABRIC				
Extra L	Left	SIZE	Right	Extra R
(HG1-RF3H4D)		3" L x 4" D		(HG1-RF3H4D)
(HG1-RF3H5D)		3" L x 5" D		(HG1-RF3H5D)
(HG1-RF4H4D)		4" L x 4" D		(HG1-RF4H4D)
(HG1-RF4H6D)		4" L x 6" D		(HG1-RF4H6D)
(HG1-RF4H8D)		4" L x 8" D		(HG1-RF4H8D)
(HG1-RF4H10D)		4" L x 10" D		(HG1-RF4H10D)
(HG1-RF4H12D)		4" L x 12" D		(HG1-RF4H12D)
(HG1-RF4H14D)		4" L x 14" D		(HG1-RF4H14D)
(HG1-RF4H16D)		4" L x 16" D		(HG1-RF4H16D)

COMFORT-TEK FABRIC				
Extra L	Left	SIZE	Right	Extra R
(HG1-RF3H4D-AL)		3" L x 4" D		(HG1-RF3H4D-AR)
(HG1-RF3H5D-AL)		3" L x 5" D		(HG1-RF3H5D-AR)
(HG1-RF4H4D-AL)		4" L x 4" D		(HG1-RF4H4D-AR)
(HG1-RF4H6D-AL)		4" L x 6" D		(HG1-RF4H6D-AR)
(HG1-RF4H8D-AL)		4" L x 8" D		(HG1-RF4H8D-AR)
(HG1-RF4H10D-AL)		4" L x 10" D		(HG1-RF4H10D-AR)
(HG1-RF4H12D-AL)		4" L x 12" D		(HG1-RF4H12D-AR)
(HG1-RF4H14D-AL)		4" L x 14" D		(HG1-RF4H14D-AR)
(HG1-RF4H16D-AL)		4" L x 16" D		(HG1-RF4H16D-AR)

3.2 LATERAL THIGH SUPPORT HARDWARE

HCPCS Code: E0956 (OPTIONAL)

NOTE: Lateral thigh support hardware will allow for width adjustability. Hardware in Section A comes standard with 2 links. Each extra link in Section B allows for 1" of adjustability.

A.

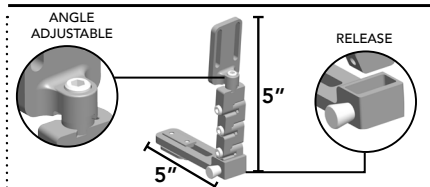
REMOVABLE
MSRP \$240.00/ea

- OR -

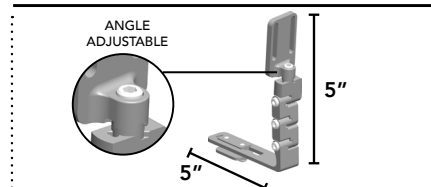
FIXED
MSRP \$100.00/ea

B.

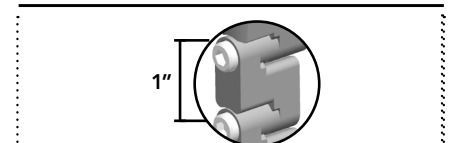
ADDITIONAL LINK
MSRP \$35.00/extra link



LEFT (HGL-QR)	RIGHT (HGR-QR)
(1) EXTRA L	(1) EXTRA R
(2) EXTRA L	(2) EXTRA R



LEFT (HGL-RS)	RIGHT (HGR-RS)
(1) EXTRA L	(1) EXTRA R
(2) EXTRA L	(2) EXTRA R



LEFT (HG1-LINK)	RIGHT (HG1-LINK)
(1) EXTRA L	(1) EXTRA R
(2) EXTRA L	(2) EXTRA R
(3) EXTRA L	(3) EXTRA R