

# ACTA-RELIEF™ ORDER FORM

# permobil

SEATING + POSITIONING

HCPCS CODING: E2615  
POSITIONING BACK, POSTERIOR LATERAL

Company Name/ACCT #: \_\_\_\_\_

P.O. Number: \_\_\_\_\_

Requested By: \_\_\_\_\_

Phone: \_\_\_\_\_ Fax: \_\_\_\_\_

Email: \_\_\_\_\_

Ship To: \_\_\_\_\_

Patient Reference: \_\_\_\_\_



*This back support is also available through CUSTOM*

*Shown with Compass® 4 Quick Release 2 Point Hardware.  
Cover appearance may vary with hardware selection.*

## 1 SIZE SELECTION

Required

\*Length (L) refers to the actual size dimension of the support from bottom to top edge.

### BASE MSRP

LENGTH*	22"	\$746.00			
	20"				
	18"				
	16"				
	14"				
	12"				
	10"				
	14"	16"	18"	20"	
	FRAME WIDTH				

Sizes available are subject to hardware being used.

## AR-BS \_\_\_\_\_

Please fill in one of the above with dimensions from the size charts to the right.

Example Part: **AR-BS14W16L**

Hardware will be selected in Section 2.

14W10L	16W10L	18W10L	20W10L
--------	--------	--------	--------

Please note these sizes are not available with lateral trunk supports or a head support.

14W12L	16W12L	18W12L	20W12L
--------	--------	--------	--------

Please note these sizes are not available with 4 POINT when using lateral trunk supports.

IF DESIRED SIZE IS NOT LISTED, PLEASE CONTACT CUSTOMER SERVICE FOR ASSISTANCE. | 800.736.0925

### Sizes available with 2 POINT Mounting Hardware

LENGTH*	22"	14W22L	16W22L	18W22L	20W22L
	20"	14W20L	16W20L	18W20L	20W20L
	18"	14W18L	16W18L	18W18L	20W18L
	16"	14W16L	16W16L	18W16L	20W16L
	14"	14W14L	16W14L	18W14L	20W14L
	12"	14W12L	16W12L	18W12L	20W12L
	10"	14W10L	16W10L	18W10L	20W10L
	14"	16"	18"	20"	
	FRAME WIDTH				

### Sizes available with 4 POINT Mounting Hardware

LENGTH*	22"	14W22L	16W22L	18W22L	20W22L
	20"	14W20L	16W20L	18W20L	20W20L
	18"	14W18L	16W18L	18W18L	20W18L
	16"	14W16L	16W16L	18W16L	20W16L
	14"	14W14L	16W14L	18W14L	20W14L
	12"	14W12L	16W12L	18W12L	20W12L
	10"				
	14"	16"	18"	20"	
	FRAME WIDTH				

### Sizes available with POWER Mounting Hardware

LENGTH*	22"	14W22L	16W22L	18W22L	20W22L
	20"	14W20L	16W20L	18W20L	20W20L
	18"	14W18L	16W18L	18W18L	20W18L
	16"	14W16L	16W16L	18W16L	20W16L
	14"	14W14L	16W14L	18W14L	20W14L
	12"	14W12L	16W12L	18W12L	20W12L
	10"				
	14"	16"	18"	20"	
	FRAME WIDTH				

# 2 COVER & HARDWARE SELECTION

Required

## 2.1 COVER SELECTION

MSRP \$0.00

Both fabrics are latex-free. Fabric selection is for the support surface only. Other fabrics used in cover construction remain the same.



**COMFORT-TEK™** is a smooth, easily cleaned surface. The fluid protection aids in infection control.



**STRETCH-AIR™** has comfortable stretch, air transmission and heat dissipation. It is not fluid resistant.

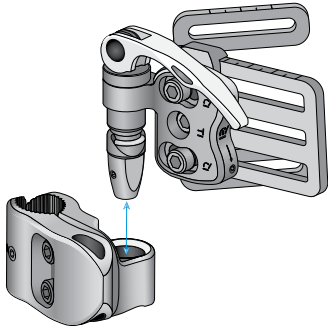
**COMFORT-TEK™** Cover  
(COMFORT-TEK)

**STRETCH-AIR™** Cover  
(STRETCH-AIR)

## 2.2 HARDWARE STYLE

### COMPASS® 4 QUICK RELEASE

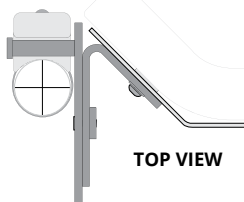
Price included in back support purchase



**QUICK RELEASE 2 POINT**  
(Q-COMPASS)

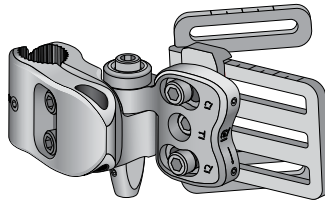
**QUICK RELEASE 4 POINT**  
(Q-COMPASS4)

**4 POINT** hardware is required on all 24"W back supports using Compass® 4 hardware.



### COMPASS® 4 FIXED

Price included in back support purchase



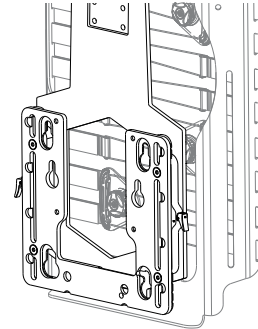
**FIXED** fully adjustable hardware requires tools for back support removal

**FIXED 2 POINT**  
(NQ-COMPASS)

**FIXED 4 POINT**  
(NQ-COMPASS4)

### COMPASS® POWER MOUNT

MSRP add \$40.00



**POWER MOUNT** hardware has 8" of height adjustment in 1/2" increments without using tools.

**QUANTUM w/ TRU BALANCE 3**  
(PMB-QUANTUM)

**PERMOBIL w/ CORPUS 3G**  
(PMB-PERMOBIL)

**QUICKIE w/ 3.7 POWER**  
(PMB-QUICKIE)

**AVID REHAB w/ POWER T & R**  
(PMB-AVID)

**ROVI w/ MOTION CONCEPTS\***  
(PMB-ROVI)

\*Using Power Mount Hardware on ROVI requires mounting to the RECESSED PLANAR INTERFACE PLATE available when ordering the Motion Concepts Seating System. Drilling is required for mounting.

# 3 BACK SUPPORT ADD-ON SELECTIONS

Optional

## 3.1 COLOR

MSRP \$26.00

Accent colors are applied via colored piping. Placement of the piping may vary by back support size and mounting hardware. If no colors are selected, our standard silver reflective piping is used at no additional cost.



Color Location

<b>RED</b> (RED)
<b>PURPLE</b> (PURPLE)
<b>PINK</b> (PINK)
<b>BLUE</b> (BLUE)
<b>GREEN</b> (GREEN)
<b>ORANGE</b> (ORANGE)
<b>REMOVE</b> (REMOVE)

## 3.2 EMBROIDERY

MSRP \$26.00

**A. THREAD COLOR OPTIONS**

<b>RED</b> (EMB-RED)	<b>BLUE</b> (EMB-BLUE)
<b>PURPLE</b> (EMB-PURPLE)	<b>GREEN</b> (EMB-GREEN)
<b>PINK</b> (EMB-PINK)	<b>SILVER</b> (EMB-SILVER)

**B. FONT OPTIONS**

<b>Helvetica</b> (EMB-Helvetica)	<b>Twilight</b> (EMB-Twilight)
<b>Garamond</b> (EMB-Garamond)	<b>Script</b> (EMB-Script)

**C. WORD ONE**

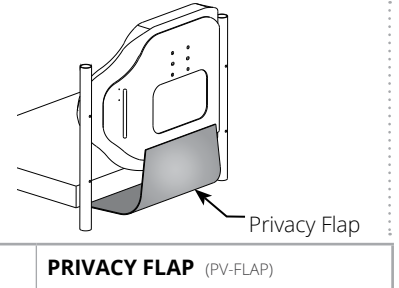
**WORD TWO (optional)**

*\*ADDITIONAL LEAD TIMES MAY APPLY*

## 3.3 PRIVACY FLAP

MSRP \$37.00

This flap connects with hook & loop attachment between the seat and back for added privacy.



**PRIVACY FLAP** (PV-FLAP)

# 4 BODILINK® LATERAL TRUNK SUPPORT & HARDWARE

## 4.1 PREMIUM PAD SIZE & SHAPE

HCPCS Code: E0956 MSRP \$88.00/ea.

- You may make one selection per column in section 4.1.
- Follow each column down to sections 4.2 and 4.3 and select a style and cover for each pad selected in section 4.1

\*Length (L) refers to the dimension of the support from top to bottom edge. Depth (D) refers to the dimension of the support from anterior to posterior edge.

	SHAPE	SIZE	LEFT	*EXTRA LEFT	RIGHT	*EXTRA RIGHT
<b>SUPPORTIVE</b>		<b>3"L x 4"D</b>	BL-LTSP2S-3L4D-LH	BL-LTSP2S-3L4D-LH	BL-LTSP2S-3L4D-RH	BL-LTSP2S-3L4D-RH
		<b>3"L x 5.5"D</b>	BL-LTSP2S-3L5D-LH	BL-LTSP2S-3L5D-LH	BL-LTSP2S-3L5D-RH	BL-LTSP2S-3L5D-RH
		<b>4"L x 5"D</b>	BL-LTSP2S-4L5D-LH	BL-LTSP2S-4L5D-LH	BL-LTSP2S-4L5D-RH	BL-LTSP2S-4L5D-RH
		<b>4"L x 6.5"D</b>	BL-LTSP2S-4L6D-LH	BL-LTSP2S-4L6D-LH	BL-LTSP2S-4L6D-RH	BL-LTSP2S-4L6D-RH
		<b>5"L x 6.5"D</b>	BL-LTSP2S-5L6D-LH	BL-LTSP2S-5L6D-LH	BL-LTSP2S-5L6D-RH	BL-LTSP2S-5L6D-RH
		<b>6"L x 6.5"D</b>	BL-LTSP2S-6L6D-LH	BL-LTSP2S-6L6D-LH	BL-LTSP2S-6L6D-RH	BL-LTSP2S-6L6D-RH
<b>OR</b>		<b>3"L x 4"D</b>	BL-LTSP2A-3L4D-LH	BL-LTSP2A-3L4D-LH	BL-LTSP2A-3L4D-RH	BL-LTSP2A-3L4D-RH
		<b>3"L x 5.5"D</b>	BL-LTSP2A-3L5D-LH	BL-LTSP2A-3L5D-LH	BL-LTSP2A-3L5D-RH	BL-LTSP2A-3L5D-RH
		<b>4"L x 5"D</b>	BL-LTSP2A-4L5D-LH	BL-LTSP2A-4L5D-LH	BL-LTSP2A-4L5D-RH	BL-LTSP2A-4L5D-RH
		<b>4"L x 6.5"D</b>	BL-LTSP2A-4L6D-LH	BL-LTSP2A-4L6D-LH	BL-LTSP2A-4L6D-RH	BL-LTSP2A-4L6D-RH
		<b>5"L x 6.5"D</b>	BL-LTSP2A-5L6D-LH	BL-LTSP2A-5L6D-LH	BL-LTSP2A-5L6D-RH	BL-LTSP2A-5L6D-RH
		<b>6"L x 6.5"D</b>	BL-LTSP2A-6L6D-LH	BL-LTSP2A-6L6D-LH	BL-LTSP2A-6L6D-RH	BL-LTSP2A-6L6D-RH

## 4.2 PREMIUM PAD STYLE

MSRP \$0.00/ea.



\*"EXTRA" parts may not fit depending on back support, pad, and hardware size and style combinations. Please contact customer support with questions.

STYLE OPTIONS	LEFT	*EXTRA LEFT	RIGHT	*EXTRA RIGHT
<b>MOLDABLE</b>	LTS-P2-MOLD	LTS-P2-MOLD	LTS-P2-MOLD	LTS-P2-MOLD
<b>RIGID</b>	LTS-P2-RIGID	LTS-P2-RIGID	LTS-P2-RIGID	LTS-P2-RIGID

4.3

PREMIUM PAD COVER

COVER OPTIONS	MSRP	LEFT	*EXTRA LEFT	RIGHT	*EXTRA RIGHT
<b>NO COVER</b>	\$0.00/ea.	LTS-P2-NO-CV	LTS-P2-NO-CV	LTS-P2-NO-CV	LTS-P2-NO-CV
<b>COMFORT-TEK™</b>	\$0.00/ea.	LTS-P2-COMFORT	LTS-P2-COMFORT	LTS-P2-COMFORT	LTS-P2-COMFORT
<b>STRETCH-AIR™</b>	\$0.00/ea.	LTS-P2-STRETCH	LTS-P2-STRETCH	LTS-P2-STRETCH	LTS-P2-STRETCH
<b>GLIDEWEAR®</b>	\$13.00/ea.	LTS-P2-GLIDE	LTS-P2-GLIDE	LTS-P2-GLIDE	LTS-P2-GLIDE
<b>COMFORT-TEK™ with FOAM</b>	\$13.00/ea.	LTS-P2-COMFORT-FM	LTS-P2-COMFORT-FM	LTS-P2-COMFORT-FM	LTS-P2-COMFORT-FM
<b>STRETCH-AIR™ with FOAM</b>	\$13.00/ea.	LTS-P2-STRETCH-FM	LTS-P2-STRETCH-FM	LTS-P2-STRETCH-FM	LTS-P2-STRETCH-FM
<b>GLIDEWEAR® with FOAM</b>	\$26.00/ea.	LTS-P2-GLIDE-FM	LTS-P2-GLIDE-FM	LTS-P2-GLIDE-FM	LTS-P2-GLIDE-FM

**COMFORT-TEK™**  
FOR FLUID PROTECTION & AN EASILY CLEANED SURFACE.

**STRETCH-AIR™**  
FOR AIR TRANSMISSION & HEAT DISSIPATION.

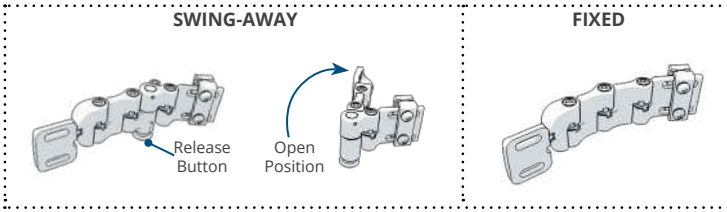
**GlideWear**  
FOR SKIN PROTECTION & SHEAR REDUCTION. NOT FLUID RESISTANT.

**COVER with FOAM**  
FOR SOFT FEEL, NON-ZERO CUSHIONING SUPPORT.

4.4

GT2 MOUNTING HARDWARE

Both Fixed and Swing-Away hardware styles are adjustable.

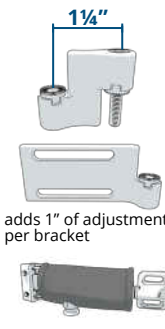


- You may make one selection per column in section 4.4.
- Extra links and long mounting bracket (section 4.5) only for GT2 style hardware.

SLOT MOUNTING	MSRP	LEFT	*EXTRA LEFT	RIGHT	*EXTRA RIGHT
<b>OR</b> <b>SWING-AWAY</b> HCPCS Code: E1028	\$298.00/ea.	BL-LTS-GT2SAK-LH	BL-LTS-GT2SAK-LH	BL-LTS-GT2SAK-RH	BL-LTS-GT2SAK-RH
<b>FIXED</b>	\$178.00/ea.	BL-LTS-GT2FXK-LH	BL-LTS-GT2FXK-LH	BL-LTS-GT2FXK-RH	BL-LTS-GT2FXK-RH

4.5

GT2 ADDITIONAL OPTIONS



EXTRA HARDWARE LINKS	LEFT	ADD'L LEFT	RIGHT	ADD'L RIGHT
MSRP \$37.00/link	BL-LTS-GT2LINK	BL-LTS-GT2LINK	BL-LTS-GT2LINK	BL-LTS-GT2LINK
LONG MOUNTING BRACKET	LEFT	*EXTRA LEFT	RIGHT	*EXTRA RIGHT
For Slot Mount MSRP \$37.00/ea	BL-LTS-GT2LSLOT-LH	BL-LTS-GT2LSLOT-LH	BL-LTS-GT2LSLOT-RH	BL-LTS-GT2LSLOT-RH
HARDWARE COVER	LEFT	*EXTRA LEFT	RIGHT	*EXTRA RIGHT
MSRP \$26.00/ea	BL-LTS-HCOVER	BL-LTS-HCOVER	BL-LTS-HCOVER	BL-LTS-HCOVER

# 5 BODILINK® HEAD SUPPORT HARDWARE & PADS

- You may make one selection per column.
- Choose between premium (5.1) -or- basic (5.3).
- Choose a cover material in 5.2 -or- 5.4.

## 5.1 PREMIUM PAD SIZE

HCPCS CODING: E0955 MSRP \$237.00

Length (L) refers to the actual size dimension of the support from bottom to top edge.

W		Pad Firmness	
L	6W x 3L	Soft	BL-HSP1-6W3L
		Extra Soft	BL-HSP2-6W3L
L	8W x 4L	Soft	BL-HSP1-8W4L
		Extra Soft	BL-HSP2-8W4L
L	10W x 5L <i>with adjustable wings</i>	Soft	BL-HSP1-10W5L
		Extra Soft	BL-HSP2-10W5L
L	12W x 5L <i>with adjustable wings</i>	Soft	BL-HSP1-12W5L
		Extra Soft	BL-HSP2-12W5L
L	14W x 5L <i>with adjustable wings</i>	Soft	BL-HSP1-14W5L
		Extra Soft	BL-HSP2-14W5L
L	18W x 5L <i>with adjustable wings</i>	Soft	BL-HSP1-18W5L
		Extra Soft	BL-HSP2-18W5L



Premium Head Support Pads angles can be formed by adjusting the plates in the pad.

## 5.2 PREMIUM PAD COVER MATERIAL



FOR SKIN PROTECTION & SHEAR REDUCTION. NOT FLUID RESISTANT.

COMFORT-TEK



FOR FLUID PROTECTION & AN EASILY CLEANED SURFACE.

STRETCH-AIR



FOR PATIENT COMFORT & HEAT DISSIPATION.

	GlideWear® (GLIDEWEAR) (add \$26.00)
	Comfort-Tek (COMFORT-TEK)
	Stretch-Air (STRETCH-AIR)

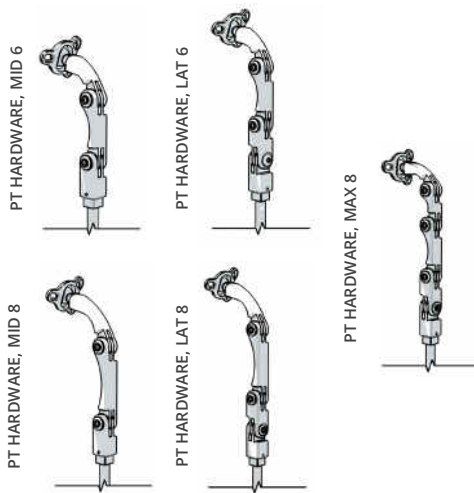
## 5.3 PT HARDWARE, REMOVABLE

HCPCS E1028

- After choosing hardware in 5.3, choose a stem length.
- Choose which mounting block option you require in 5.4.

### PT HARDWARE RANGE OF MOTION

PT MODEL	TOTAL # OF LINKS	TOTAL LINK LENGTH	MAX. ANTERIOR REACH	MAX. POSTERIOR REACH	MAX. LATERAL REACH
MID 6	2	6"	5.5"	1"	N/A
LAT 6	3	6"	5.5"	1"	6"
MID 8	2	8"	7.5"	1"	N/A
LAT 8	3	8"	7.5"	1"	8"
MAX 8	4	8"	7.5"	3"	8"

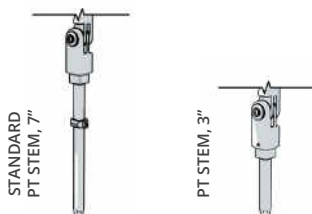


SIZE & SHAPE	MSRP
MID 8	\$223.00
LAT 8	\$260.00
MAX 8*	\$327.00
MID 6	\$223.00
LAT 6	\$260.00

PART NUMBER	
(BL-HS-PT1RMMID8)	
(BL-HS-PT1RMLAT8)	
(BL-HS-PT1RMMAX8)	
(BL-HS-PT1RMMID6)	
(BL-HS-PT1RMLAT6)	

\*Provides the greatest amount of articulation and range of motion.

### PT HARDWARE, STEM LENGTH OPTION



STEM LENGTH	MSRP	PART NUMBER	
STANDARD 7" STEM	\$0.00	(HS-STEM-7)	
**3" STEM	\$0.00	(HS-STEM-3)	

\*\*3" Stem is recommended for use with power mounting where there may be special constraints with power chair functions

## 5.4 HEAD SUPPORT MOUNTING OPTION



**BRACKET WITH MOUNTING BLOCK- ACTA-RELIEF™**  
18W Shown Above  
For Non-Power Mount Only.



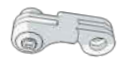
**MOUNTING BLOCK- POSTERIOR A**  
For Acta-Relief with Power Mount Only

MOUNTING BLOCK OR BRACKET WITH MOUNTING BLOCK	MSRP
*ACTA-RELIEF™ 14W BRACKET WITH MOUNTING BLOCK	\$72.00
*ACTA-RELIEF™ 16W BRACKET WITH MOUNTING BLOCK	\$72.00
*ACTA-RELIEF™ 18W BRACKET WITH MOUNTING BLOCK	\$72.00
*ACTA-RELIEF™ 20W BRACKET WITH MOUNTING BLOCK	\$72.00
POSTERIOR A MOUNTING BLOCK	\$0.00

PART NUMBER	
(HS-MB-AR14W)	
(HS-MB-AR16W)	
(HS-MB-AR18W)	
(HS-MB-AR20W)	
(HS-MB-POSTA)	

\*For Acta Relief™, includes mounting bracket and POSTA block.  
If you already have an Acta-Relief™ head support bracket, order POSTA Block

## 5.5 EXTRA HARDWARE



LINK LENGTH	MSRP
**EXTRA 2" LINK	\$57.00

EXTRA PART
(BL-HS-PT1LINK2)



**EXTRA 3" LINK	\$57.00
-----------------	---------

(BL-HS-PT1LINK3)
------------------



**EXTRA 4" LINK	\$57.00
-----------------	---------

(BL-HS-PT1LINK4)
------------------



TOOL-LESS WING LOCK	MSRP
**1 LOCK	\$21.00/each

EXTRA PART
(BL-HS-52WINGA1)

EXTRA PART
(BL-HS-52WINGA1)

EXTRA PART
(BL-HS-52WINGA1)

EXTRA PART
(BL-HS-52WINGA1)

\*\*For PT Hardware Only



**BRACKET- ACTA-RELIEF™**  
18W Shown Above

BRACKET SIZE	MSRP	PART NUMBER	
*ACTA-RELIEF™ 14W BRACKET	\$152.00	(BL-HS-AR14W)	
*ACTA-RELIEF™ 16W BRACKET	\$152.00	(BL-HS-AR16W)	
*ACTA-RELIEF™ 18W BRACKET	\$152.00	(BL-HS-AR18W)	
*ACTA-RELIEF™ 20W BRACKET	\$152.00	(BL-HS-AR20W)	

\*Bracket only, does not include mounting block.



ADDITIONAL	MSRP	EXTRA PART
1/4" SPACER PLATE	\$37.00/each	(BL-HS-SPCRA)