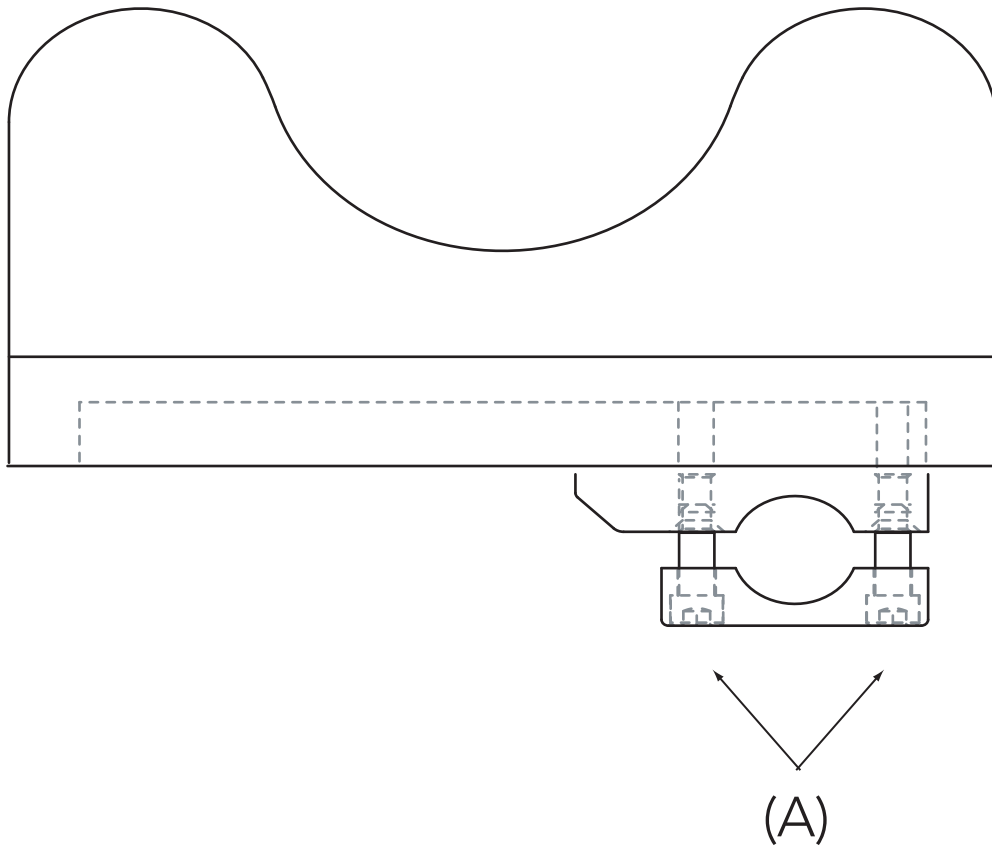


---

## DIRECT INTERLOCK MOUNT

Comfort Arm®, Smart Arm, Molded Arm, Flip-Up Lap Tray, Trunk Support Firm

Example shown: Comfort Arm



- 
- 1** Remove existing armrest from wheelchair.
  - 2** Take the 2 screws (A) out of bottom clamp. Mount top half of clamp that is connected to base plate to top of arm rest tube. Reinstall bottom damp with screws.