

HYALITE® ORDER FORM



HCPCS CODING: E2603/E2604
SKIN PROTECTION SEAT CUSHION

Company Name/ACCT #: _____
P.O. Number: _____
Requested By: _____
Phone: _____ Fax: _____
Email: _____
Ship To: _____
Patient Reference: _____

Hyalite



1 SIZE & COVER

Please select size in the appropriate fabric chart below.

COMFORT-TEK™
SELECTED FOR INCONTINENCE PROTECTION
& AN EASILY CLEANED SURFACE.

OR

STRETCH-AIR™
SELECTED FOR AIR TRANSMISSION
& HEAT DISSIPATION.

COMFORT-TEK™											
		\$237.00				\$355.50		\$309.00		\$463.50	
DEPTH	20"	HY-GF-1620	HY-GF-1720	HY-GF-1820	HY-GF-1920	HY-GF-2020	HY-GF-2120	HY-GF-2220	HY-GF-2320	HY-GF-2420	
	19"	HY-GF-1619	HY-GF-1719	HY-GF-1819	HY-GF-1919	HY-GF-2019	HY-GF-2119	HY-GF-2219	HY-GF-2319	HY-GF-2419	
	18"	HY-GF-1618	HY-GF-1718	HY-GF-1818	HY-GF-1918	HY-GF-2018	HY-GF-2118	HY-GF-2218	HY-GF-2318	HY-GF-2418	
	17"	HY-GF-1617	HY-GF-1717	HY-GF-1817	HY-GF-1917	HY-GF-2017	HY-GF-2117	HY-GF-2217	HY-GF-2317	HY-GF-2417	
	16"	HY-GF-1616	HY-GF-1716	HY-GF-1816	HY-GF-1916	HY-GF-2016	HY-GF-2116	HY-GF-2216	HY-GF-2316	HY-GF-2416	
		16"	17"	18"	19"	20"	21"	22"	23"	24"	
		WIDTH									

STRETCH-AIR™											
		\$237.00				\$355.50		\$309.00		\$463.50	
DEPTH	20"	HY-GU-1620	HY-GU-1720	HY-GU-1820	HY-GU-1920	HY-GU-2020	HY-GU-2120	HY-GU-2220	HY-GU-2320	HY-GU-2420	
	19"	HY-GU-1619	HY-GU-1719	HY-GU-1819	HY-GU-1919	HY-GU-2019	HY-GU-2119	HY-GU-2219	HY-GU-2319	HY-GU-2419	
	18"	HY-GU-1618	HY-GU-1718	HY-GU-1818	HY-GU-1918	HY-GU-2018	HY-GU-2118	HY-GU-2218	HY-GU-2318	HY-GU-2418	
	17"	HY-GU-1617	HY-GU-1717	HY-GU-1817	HY-GU-1917	HY-GU-2017	HY-GU-2117	HY-GU-2217	HY-GU-2317	HY-GU-2417	
	16"	HY-GU-1616	HY-GU-1716	HY-GU-1816	HY-GU-1916	HY-GU-2016	HY-GU-2116	HY-GU-2216	HY-GU-2316	HY-GU-2416	
		16"	17"	18"	19"	20"	21"	22"	23"	24"	
		WIDTH									

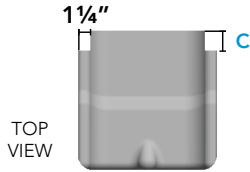
2 HYALITE® ACCESSORIES

*All accessories are cosmetic changes to the cushion except for options in gray, which are add on items.

2.1 GROWTH NOTCHES MSRP \$0.00

If growth notches are selected, a 1¼" wide cut will be taken from each side to allow the cushion to fit between the chair canes.

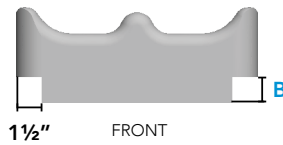
DEPTH OF NOTCHES



- C = 1" D (GROWTH-NOTCH-1)
- C = 2" D (GROWTH-NOTCH-2)
- C = 3" D (GROWTH-NOTCH-3)
- C = Other _____ (GROWTH-NOTCH-OTHER)

2.2 RAIL CUTS MSRP \$25.00

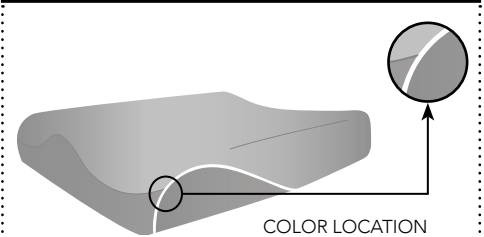
A standard 1 1/2" wide cut will be made and you decide how high the cut will need to be. All cuts run the entire depth of the cushion.



- B = 1" Rail Cut (RAIL-CUT-1.0)
- B = 1½" Rail Cut (RAIL-CUT-1.5)
- B = 2" Rail Cut (RAIL-CUT-2.0)

2.3 COLOR - COMES STANDARD SILVER REFLECTIVE PIPING MSRP \$25.00

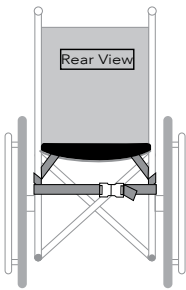
Accent colors can be applied to the cushion via colored piping. If no colors are selected, our standard silver reflective piping is used.



Red (RED)	Blue (BLUE)
Purple (PURPLE)	Green (GREEN)
Pink (PINK)	Remove (REMOVE)

2.4 KWIK STRAP® MSRP \$15.00

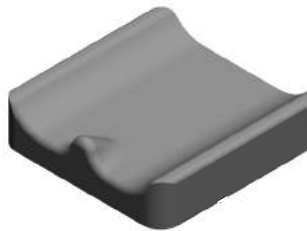
Kwik Strap® provides extra security. Kwik Strap® is connected to the bottom of the cushion via hook & loop attachment and wraps around vertical canes to secure the cushion to wheelchair during transfers.



Kwik Strap®
(KWIK-STRAP)

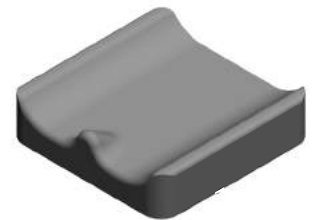
2.5 INCONTINENCE LINER MSRP One = \$58.00 - Two = \$116.00

Liner provides extra incontinence protection for the cushion.



One Extra Incontinence Liner (INCON-LINER)
Two Extra Incontinence Liners (INCON-LINER)

2.6 EXTRA COVER MSRP One = \$60.00 - Two = \$120.00



One Extra Stretch Air Outer Cover (X-STRETCH-AIR-CV)
Two Extra Stretch Air Outer Cover (2X-STRETCH-AIR-CV)
One Extra Comfort Tek Outer Cover (X-COMFORT-TEK-CV)
Two Extra Comfort Tek Outer Cover (2X-COMFORT-TEK-CV)

2.7 REMOVABLE SOLID SEAT PAN & HARDWARE KIT HCPCS Code: E2231 MSRP \$375.00

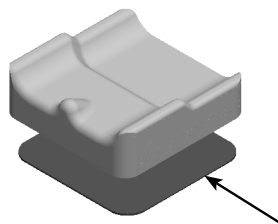
The solid seat pan kit includes a slotted aluminum pan and attaching hardware to accommodate 7/8" or 1" tubing. The kit also comes with two different cross bars to accommodate various wheelchair frame types. This will fit both folding and non-folding seat rails. Lateral trunk supports can be easily attached.



Solid Seat Pan & Hardware Kit
(RSSP-N-HARD)

2.8 RIGID INSERT HCPCS Code: E0992 MSRP \$63.00

3/16" Plastic rigidizing board.



Rigid Insert Glued (RGD-INSERT-GLUED)
Rigid Insert Not Glued (RGD-INSERT-UNGLUED)

3 LATERAL THIGH SUPPORTS & HARDWARE

INSTRUCTIONS:

- Select a left and/or right lateral pad using any combination of style, size and fabric.

3.1 LATERAL THIGH SUPPORT PADS

HPCS Code: E0956 (OPTIONAL)

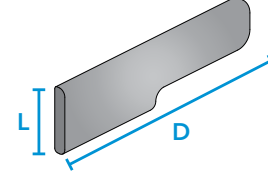
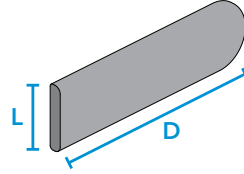
*Length (L) refers to the actual size dimension of the support from bottom to top edge.

RIGID
MSRP \$50.00/ea

RIGID CONTOURED
for Anti-Thrust Cushion
MSRP \$50.00/ea

NOTE:

T-Nut spacing along hip guide is 1" on center running the entire length of the pad.



STRETCH-AIR

SELECTED FOR AIR TRANSMISSION & HEAT DISSIPATION.



COMFORT-TEK

SELECTED FOR INCONTINENCE PROTECTION & AN EASILY CLEANED SURFACE.

STRETCH-AIR FABRIC				
Extra L	Left	SIZE	Right	Extra R
(HG1-RS3H4D)		3" L x 4" D		(HG1-RS3H4D)
(HG1-RS3H5D)		3" L x 5" D		(HG1-RS3H5D)
(HG1-RS4H4D)		4" L x 4" D		(HG1-RS4H4D)
(HG1-RS4H6D)		4" L x 6" D		(HG1-RS4H6D)
(HG1-RS4H8D)		4" L x 8" D		(HG1-RS4H8D)
(HG1-RS4H10D)		4" L x 10" D		(HG1-RS4H10D)
(HG1-RS4H12D)		4" L x 12" D		(HG1-RS4H12D)
(HG1-RS4H14D)		4" L x 14" D		(HG1-RS4H14D)
(HG1-RS4H16D)		4" L x 16" D		(HG1-RS4H16D)

- OR -

STRETCH-AIR FABRIC				
Extra L	Left	SIZE	Right	Extra R
(HG1-RS3H4D-AL)		3" L x 4" D		(HG1-RS3H4D-AR)
(HG1-RS3H5D-AL)		3" L x 5" D		(HG1-RS3H5D-AR)
(HG1-RS4H4D-AL)		4" L x 4" D		(HG1-RS4H4D-AR)
(HG1-RS4H6D-AL)		4" L x 6" D		(HG1-RS4H6D-AR)
(HG1-RS4H8D-AL)		4" L x 8" D		(HG1-RS4H8D-AR)
(HG1-RS4H10D-AL)		4" L x 10" D		(HG1-RS4H10D-AR)
(HG1-RS4H12D-AL)		4" L x 12" D		(HG1-RS4H12D-AR)
(HG1-RS4H14D-AL)		4" L x 14" D		(HG1-RS4H14D-AR)
(HG1-RS4H16D-AL)		4" L x 16" D		(HG1-RS4H16D-AR)

- OR -

COMFORT-TEK FABRIC				
Extra L	Left	SIZE	Right	Extra R
(HG1-RF3H4D)		3" L x 4" D		(HG1-RF3H4D)
(HG1-RF3H5D)		3" L x 5" D		(HG1-RF3H5D)
(HG1-RF4H4D)		4" L x 4" D		(HG1-RF4H4D)
(HG1-RF4H6D)		4" L x 6" D		(HG1-RF4H6D)
(HG1-RF4H8D)		4" L x 8" D		(HG1-RF4H8D)
(HG1-RF4H10D)		4" L x 10" D		(HG1-RF4H10D)
(HG1-RF4H12D)		4" L x 12" D		(HG1-RF4H12D)
(HG1-RF4H14D)		4" L x 14" D		(HG1-RF4H14D)
(HG1-RF4H16D)		4" L x 16" D		(HG1-RF4H16D)

COMFORT-TEK FABRIC				
Extra L	Left	SIZE	Right	Extra R
(HG1-RF3H4D-AL)		3" L x 4" D		(HG1-RF3H4D-AR)
(HG1-RF3H5D-AL)		3" L x 5" D		(HG1-RF3H5D-AR)
(HG1-RF4H4D-AL)		4" L x 4" D		(HG1-RF4H4D-AR)
(HG1-RF4H6D-AL)		4" L x 6" D		(HG1-RF4H6D-AR)
(HG1-RF4H8D-AL)		4" L x 8" D		(HG1-RF4H8D-AR)
(HG1-RF4H10D-AL)		4" L x 10" D		(HG1-RF4H10D-AR)
(HG1-RF4H12D-AL)		4" L x 12" D		(HG1-RF4H12D-AR)
(HG1-RF4H14D-AL)		4" L x 14" D		(HG1-RF4H14D-AR)
(HG1-RF4H16D-AL)		4" L x 16" D		(HG1-RF4H16D-AR)

3.2 LATERAL THIGH SUPPORT HARDWARE

HPCS Code: E0956 (OPTIONAL)

NOTE: Lateral thigh support hardware will allow for width adjustability. Hardware in Section A comes standard with 2 links. Each extra link in Section B allows for 1" of adjustability.

A.

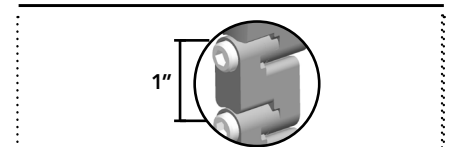
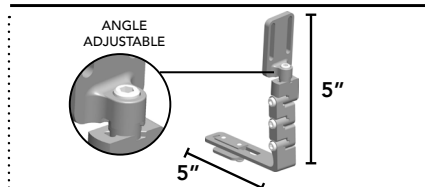
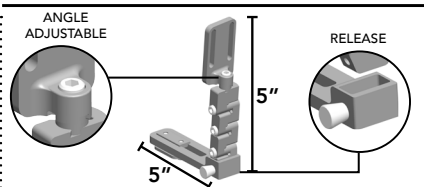
REMOVABLE
MSRP \$240.00/ea

- OR -

FIXED
MSRP \$100.00/ea

B.

ADDITIONAL LINK
MSRP \$35.00/extra link



LEFT (HGL-QR)	RIGHT (HGR-QR)
(1) EXTRA L	(1) EXTRA R
(2) EXTRA L	(2) EXTRA R

LEFT (HGL-RS)	RIGHT (HGR-RS)
(1) EXTRA L	(1) EXTRA R
(2) EXTRA L	(2) EXTRA R

LEFT (HG1-LINK)	RIGHT (HG1-LINK)
(1) EXTRA L	(1) EXTRA R
(2) EXTRA L	(2) EXTRA R
(3) EXTRA L	(3) EXTRA R