

# ARM SUPPORT ORDER FORM

HCPCS CODING: E2209 - ARM SUPPORT

*\*Since U.S. Medicare coding is subject to change, the provider should always confirm the HCPCS code and coverage criteria as part of the client assessment process.\**

Company Name/ACCT #: \_\_\_\_\_

P.O. Number: \_\_\_\_\_

Requested By: \_\_\_\_\_

Phone: \_\_\_\_\_ Fax: \_\_\_\_\_

Email: \_\_\_\_\_

Ship To: \_\_\_\_\_

Client Reference: \_\_\_\_\_

## 1 HARDWARE

### 1.1 HARDWARE OPTIONS

*\*DO NOT SEND PROTECTED HEALTH INFORMATION. IT IS NOT NEEDED TO MAKE THE PRODUCT YOU ARE REQUESTING.\**

**SLIDE ON**  
(HARDWARE ONLY)  
MSRP \$101.00



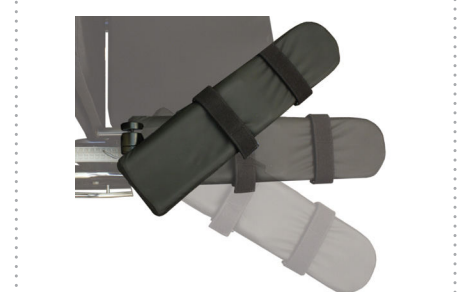
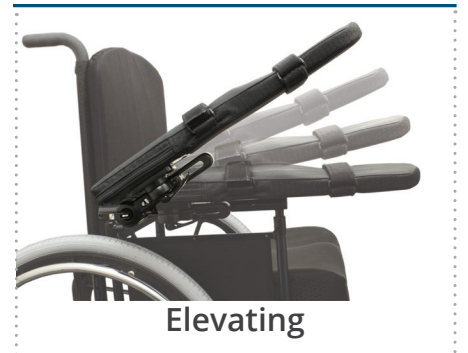
LEFT (2100L-HARD)	RIGHT (2100R-HARD)
----------------------	-----------------------

**SWING AWAY**  
(HARDWARE ONLY)  
HCPCS Code: E1028  
MSRP \$259.00



LEFT (2000L-HARD)	RIGHT (2000R-HARD)
----------------------	-----------------------

**EAD HARDWARE**  
(HARDWARE ONLY)  
HCPCS Code: E1028  
MSRP \$332.00



LEFT (3000L-HARD)	RIGHT (3000R-HARD)
----------------------	-----------------------

**FIXED INTERLOCK**  
(HARDWARE ONLY)  
MSRP \$97.00



LEFT (1000L-HARD)	RIGHT (1000R-HARD)
----------------------	-----------------------

**TRACK MOUNT FOR QUANTUM TRU-BALANCE<sup>3</sup> SEATING SYSTEMS**  
(HARDWARE ONLY)  
MSRP \$124.00



TB3 VERSION 2 TRACK SIDE MOUNT (ARMSTM-P3-HARD)
TB3 VERSION 3 TRACK BOTTOM MOUNT, LEFT (ARMBTM-P3L-HARD)
TB3 VERSION 3 TRACK BOTTOM MOUNT, RIGHT (ARMBTM-P3R-HARD)

# 2 ARM SUPPORT PADS

## 2.1 ARM SUPPORT PADS



### COMFORT-TEK® FABRIC

SELECTED FOR ITS ANTI-MICROBIAL PROPERTIES & AS AN EASILY CLEANED SURFACE.

### MOLDABLE OPTION

Moldable option can be used to elevate fingers preventing edema.



\* LOW ARM SHOWN

### STANDARD ARM

MSRP \$143.00/ea

Moldable Option MSRP \$165.00/ea



LEFT SIDE	Size	RIGHT SIDE
2002L-14-PAD	6" W x 14" D	2002R-14-PAD
2002L-17-PAD	6" W x 17" D	2002R-17-PAD
2002L-PAD	6" W x 22" D	2002R-PAD
2002L-M-PAD	6" W x 22" D Moldable Option	2002R-M-PAD

### LOW ARM

MSRP \$132.00/ea

Moldable Option MSRP \$154.00/ea



LEFT SIDE	Size	RIGHT SIDE
2004L-14-PAD	6" W x 14" D	2004R-14-PAD
2004L-17-PAD	6" W x 17" D	2004R-17-PAD
2004L-PAD	6" W x 22" D	2004R-PAD
2004L-M-PAD	6" W x 22" D Moldable Option	2004R-M-PAD

### TALL RAIL

MSRP \$165.00/ea

Moldable Option MSRP \$188.00/ea



LEFT SIDE	Size	RIGHT SIDE
2007L-PAD	7" W x 22" D	2007R-PAD
2007L-M-PAD	7" W x 22" D Moldable Option	2007R-M-PAD

### BASIC ARM

MSRP \$86.00/ea



LEFT SIDE	Size	RIGHT SIDE
1005D	3" W x 9" D	1005D
1005F	3" W x 14" D	1005F

### MOLDED ARM

MSRP \$76.00/ea



LEFT SIDE	Size	RIGHT SIDE
2300L-14-PAD	14" D	2300R-14-PAD
2300L-PAD	22" D	2300R-PAD

\*Track Mount hardware not available with Basic Arm.

ARM-SUPPORT-ORDER REV121019