



Raised Toilet Seat with Bidet
Ambient & Warm Water Temperature

Asiento Elevado para Inodoro con Bidé y
Agua a Temperatura Ambiente y Caliente

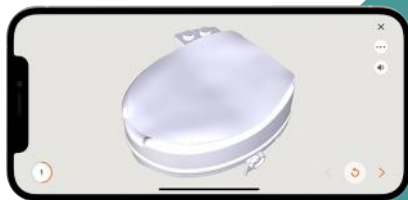
Siège de Toilette Rehaussé avec Bidet,
eau à Température Ambiente et Tiède

Item # RTL12C006-WH



Scan for easy 3D instructions

Download the BILT app before you begin



Y. Sung Handelsvertretung
Duesselthaler Str. 24
40211 Duesseldorf Germany

www.drivemedical.com

driveTM

⚠ warnings ⚠

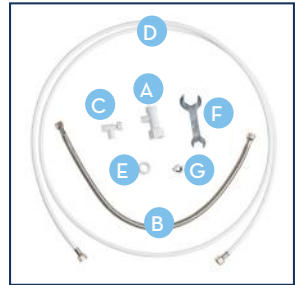
- READ ALL WARNINGS AND INSTRUCTIONS BEFORE INSTALLATION OR USE - FAILURE TO DO SO COULD RESULT IN INJURY OR PROPERTY DAMAGE.
- RISK OF SCALDING. High water temperature can cause severe burns. Do not connect this product to a water supply with a maximum temperature above 104°F (40° C).
- Be careful to test water temperature before each use of the product, to ensure prevention of injury from water that is too hot.
- Be careful to test water pressure before each use of the product, to ensure prevention of discomfort or injury from water pressure that is too high.
- Observe all local plumbing, electrical and building codes when installing or maintaining the product.
- Weight Capacity: 400 LBS / 181 KG

included parts

- A. Large Adapter (7/8") with O-Ring
- B. Cool Water Supply Hose, 2ft
- C. Mini Adapter (3/8") with O-Ring
- D. Warm Water Supply Hose, 9ft

EXTRAS

- E. Teflon Tape
- F. Wrench
- G. Inlet Cap with O-Ring

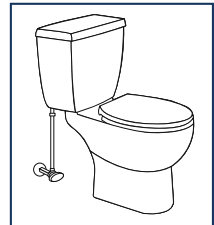


before you start

Can't reach your toilet tank connection?

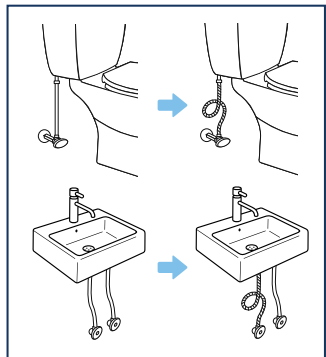
Replace the large adapter with a mini adapter included in your spare parts kit.

- If that does not work visit www.drivemedical.com/troubleshootingtipsbidet for additional tips on how to connect to different types of toilets.



Don't have a flexible hose connection?

- Replace the pipe between your toilet and water supply. Visit your local hardware store and ask for a flexible steel hose that's 3/8" x 7/8".



installation instructions

STEP 1 - PREP

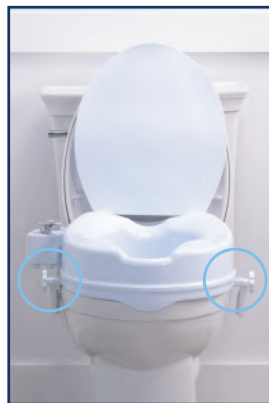
1. Clean your toilet
2. Turn off the cool water supply at the wall beside the toilet
3. Turn off the warm water supply underneath the sink
4. Drain the toilet tank completely by flushing the toilet

STEP 2 - ATTACH YOUR RAISED TOILET SEAT

1. Turn both locking clamps counterclockwise until they can no longer turn - this will open the locking devices.
2. Place raised toilet seat onto the bowl and position securely. Be sure the two locking brackets are on both sides of the bowl wall and that the seat is flush to the bowl.
3. Turn the locking brackets clockwise until tight, hand tighten only. Do not use tools as threads on adjustment bracket may strip.

NOTE:

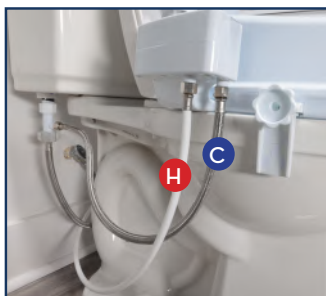
- Check for secure fit routinely before using product.
- User's weight should be centered over toilet seat.



STEP 3 - COOL WATER CONNECTION

TIPS

- You may need a wrench to disconnect the water supply hose.
 - Use a bucket or towel to catch excess water
1. Disconnect the existing water supply hose from the toilet tank
 2. Ensure o-ring is placed in the large adapter
 3. Attach the large adapter to the toilet tank connection and screw the flexible steel hose to the bottom connection
 4. Attach provided cool water supply hose to the large adapter's side connection

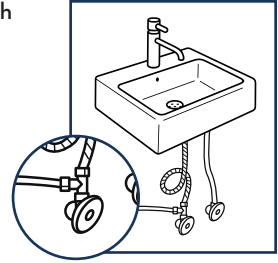


STEP 4 - WARM WATER CONNECTION

TIPS

- You may need a wrench to disconnect the water supply hose.
- Use a bucket or towel to catch excess water when disconnecting the water supply hoses.
- If a vanity cabinet is present you may want to drill a hole to accommodate the water supply hose

1. Disconnect the existing water supply hose underneath the sink
2. Ensure o-ring is placed in the mini adapter
3. Attach the mini adapter to the warm water supply valve and screw the flexible steel hose to the top connection
4. Attach provided warm water supply hose to the mini adapter's side connection



STEP 5 - COMPLETING WATER CONNECTIONS

1. Attach the cool water supply hose provided to the cool water port underneath the bidet control panel
2. Attach the warm water supply hose provided to the warm water port underneath the bidet control panel

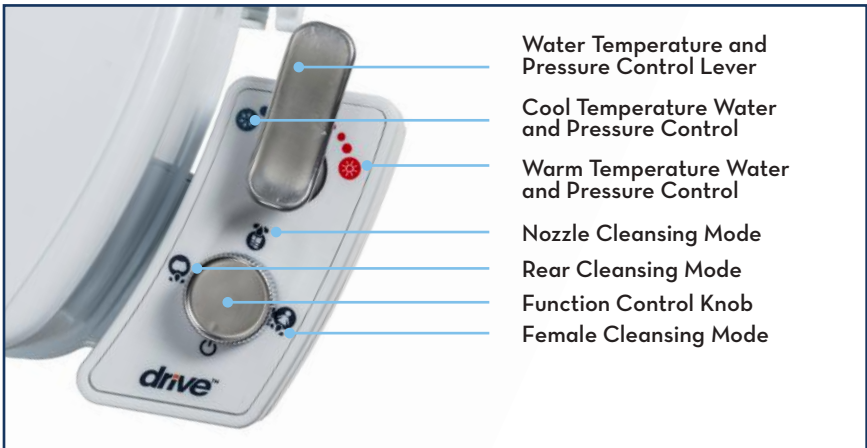
TIPS

- Wrap teflon tape tightly around threads to create a watertight seal
- Tighten by hand to avoid stripping the connection threads

STEP 6 - FINAL CHECK

1. Check connections are properly secured
2. Turn on the water supply line behind the toilet and under your sink

control panel guide



precautions

- Initial temperature of water release is contingent upon current temperature of surroundings and will warm based upon your current water setting and supply.
- Always be sure that the seat is correctly and securely locked in place before using.
- Be sure that adjustment knobs on sides of seat are tight.
- This product is designed for use with most common types of toilets. It will not fit all toilet types; be sure that the unit is correctly installed, fits properly and is stable before use.

cleaning instructions

- Use a non-abrasive detergent or household cleaner with warm water.
- Rinse with warm water and wipe dry.
- **DO NOT USE AN ABRASIVE CLEANER OR CLOTH** with this product, as damage may occur.

maintenance

Drive recommends periodic visual inspection of this product by the user, to ensure that all parts and hardware are secure, that components are in good working order and not worn, torn, frayed, loose, or rusted and that there are no obstructions or impediments to normal, safe operation. If any part or mechanism appears to be unsafe or compromised, do not use the product. If you experience problems, please contact the provider that sold you the product or visit www.drivemedical.com/help for more info.



Drive PreserveTech™ products are manufactured with an antimicrobial* agent that helps to minimize the growth of stain and odor-causing bacteria and mold on treated surfaces.

*Antimicrobial properties are built in to protect the products. These products do not protect users or others against bacteria, viruses, germs or other disease organisms

one year limited warranty

Your Drive branded product is warranted to be free of defects in materials and workmanship under normal use for (1) one year from date of purchase for the original consumer purchaser.

This device was built to exact standards and carefully inspected prior to shipment. This Lifetime Limited Warranty is an expression of our confidence in the materials and workmanship of our products and our assurance to the consumer of years of dependable service.

Drive's obligations under this warranty are limited to replacement, at Drive's option, of products or parts found to be defective, provided that such products were installed and used in accordance with instructions. Drive reserves the right to make such inspections as may be necessary to determine the cause of the defect.

Drive is not responsible for the cost of installation, removal, return shipping and/or reinstallation of products.

This warranty does NOT apply to:

- Damage or loss which occurs during shipment.
- Damage or loss sustained through any natural or man-made causes beyond the control of Drive, including but not limited to fire, earthquake, floods, etc.
- Damage or loss resulting from sediments or foreign matter contained in the water system.
- Damage or loss resulting from negligent or improper installation including installation of a unit in a harsh or hazardous environment.
- Damage or loss resulting from removal, improper repair, modification of the product, or improper maintenance including damage caused by cleaning products.
- Damages due to normal "wear and tear" will not be considered defects.
- If you have a question about your Drive device or this warranty, please contact an authorized Drive dealer.