

*Stand safely,  
turn safely*



## Etac Turner PRO

Safe transfers that are kind to  
a carers back

**etac**<sup>®</sup>

# Etac Turner PRO

*Patient turning with standing support*

## The importance of safe transfers

People in need of assistance often feel unsafe in transfer situations, and caregivers are at risk of injury when assisting with the transfer. The feeling of insecurity from both caregiver and the assisted person may result in fewer transfers taking place.

The Turner PRO allows both the assisted person and the caregiver to feel safe and the transfer can be performed with ease.

## Easy to use

Turner PRO is the perfect sit to stand aid for hospitals, care homes and in the home. The intuitive design makes it easy to use, the only adjustments needed are handle height and height of leg support.

The Turner PRO works well on different flooring materials including carpets.



*A safe transfer which allows eye contact and good communication.*

### Etac Turner PRO

- Etac Turner PRO

16090106

### Dimensions

Handle height: 78-120 cm/30.7"-49.2"

Footplate diameter: 40 cm/15,7"

Footplate height: 20 mm/0,8"

Lower leg support width: 38 cm/15"

Lower leg support height: 15 cm/5,9"

### Material

Cast aluminum, powder coated steel, chrome 3

### Compliant with

MDD 93/42/EEC

EN 12182

### Total weight

7.5 kg /16.5 lbs

### Weight

Max user weight 200 kg / 441 lbs



Clean the product with a solvent-free cleaning agent (pH level 5-9), or with a 70% disinfectant solution. Can be decontaminated at max 85°C / 185°F is so required.

## Features



### Compact

The sit to stand aid is easy to transport due to a low weight of only 7.5 kg. It is compact, evenly balanced and easy to grip.



### Angled leg support

Soft and comfortable, provides lateral support. Easy to adjust to whatever height is needed.



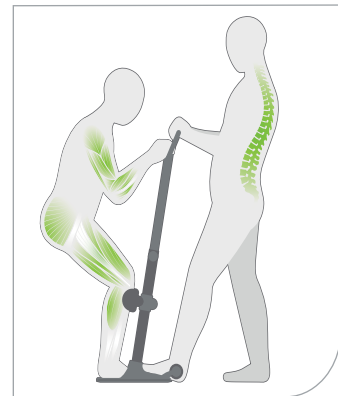
### Contrasting coloured handle

The orange handle provides a strong, high contrasting colour which can help users with impaired vision or dementia. It also offers many grip possibilities.



### Functional base plate

Cast aluminum base plate with integrated anti slip function is easy to turn. Together with the wheel, Turner PRO works well on different flooring materials including carpets..



*Design, function and safety are extremely important to us, and this is presented here in the form of a sit to stand aid. The scandinavian design gives you maximum comfort and a more stylish environment.*

*Turner PRO has a small footprint which makes it the perfect choice when transferring in a tight space, for example between a wheelchair and toilet.*

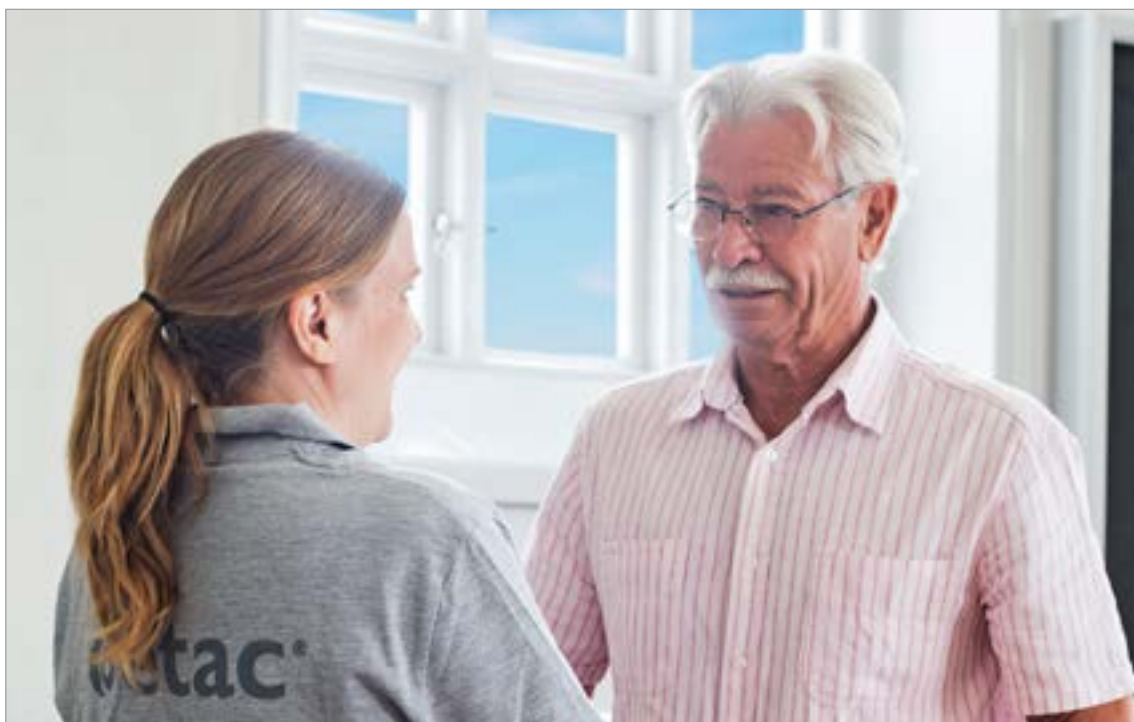
*Encourages natural standing and sitting movement for the user. Enables a good posture and minimises the risk of injury for the carer when transferring.*



## Intended use

Turntable with support handle

- Transfer from bed to wheelchair / shower chair
- Transfer from wheelchair to toilet
- Transfer from chair to wheelchair / shower chair



*"Everyone should be able to live a free and independent life and pursue their dreams regardless of any physical circumstances."*