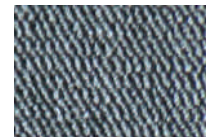
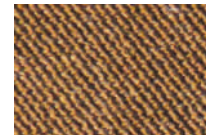




Hazelnut



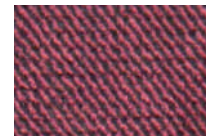
Sterling



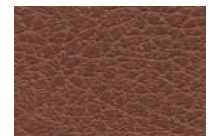
Copper



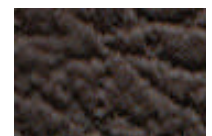
Calypso



Shiraz



Bridle*



Coffee Bean*

Shown in Hazelnut

* upcharge applies

Relaxer PR766



Comfort Zone™
by GOLDEN

The Relaxer is the original power lift chair recliner featuring our patented MaxiComfort® Ultimate Recline Technology standard! The Relaxer model is a true Golden customer favorite, now with a design refresh with modern, well-appointed features like super plush rounded armrests, an adjustable three-pillow waterfall back, an updated pocket style, and an extra wide chaise pad for better lower leg support. Every MaxiComfort® chair comes standard with our exclusive AutoDrive™ 3.0 hand control to make reclining the chair into your favorite position a breeze!

Standard Features:

- MaxiComfort® Technology
- Programmable AutoDrive™ hand control
- Extra pocket



PR766 Relaxer



Model Number	PR766-MED
Size	Medium
Weight Capacity	375 LB
Positioning	MaxiComfort
Comfort Zone(s)	2
Twilight Technology	NO
Chaise Seat	YES
Pocketed Coil Seat	YES
Back Type	3 Pillow
Removable Back Type	Bolt
Head Rest Cover	NO
Arm Rest Covers	NO
Overall Width	36"
Overall Height	44.5"
Width Between Arms	20.5"
Floor to Top of Seat	20"
Seat Depth	20.5"
Seat to Top of Back	28.5"
Seat to Top of Arm	5"
Distance Required from Wall Reclined	26"
Extension Reclined from Back of Seat to End of Foot Rest	44"
Life Time Warranty, Chair Frame, Lift Frame, Recline Mechanism	YES
Warranty on Electrical Parts	3 Yrs.
Pro Rated Years 4 Thru 7	YES
Warranty on Mechanical Labor	3 Yrs.
Warranty on Electrical Labor	1 Yr.
Hand Control Routing	Inside Arm
Extra Pocket Option	Standard
Heat & Massage Option	YES
Articulating Headrest Option	NO
Adjustable Lumbar Option	NO
AutoFlex Option	YES
Foot Rest Extension Option	YES
Straight Lift Option	YES
USB Charging Port	NO
Place of Origin	USA

Battery Backup & SmartTek Diagnostic System STANDARD on all Golden models.



shown in Hazelnut



shown in Coffee Bean

TWO ZONE POSITIONING SYSTEM

Comfort Zone™
by GOLDEN

Comfort Zones 1 & 2 work together to create individualized wellness positioning and comfort. Each Comfort Zone can be adjusted independently by using the exclusive AutoDrive hand control.



Literature is current at time of printing. Golden Technologies reserves the right to make changes to the product or literature at any time.

Sizes may vary depending on fabric, filling material, upholstery and carpet thickness. All measurements taken on concrete floor using levels and metal rulers.



Complies with
UL 73 and
CSA C22.2 No. 68