

INVACARE®  
**UNI-RECLINERS**  
COMFORT SOLUTIONS

---



---

Invacare's line of **Uni-Recliners** delivers outstanding value, durability and comfort in health care chairs and recliners. The Deluxe Invacare Mobile Recumbent Chairs (MRC) provide essential ergonomic support and comfort in a recliner. The Invacare Mobile Treatment Chair (MTC) is especially suited for clinical needs. Regardless of your need, Invacare's extensive line of recliners are ideal for a range of long-term care and clinical seating applications. They're rugged, easy to clean and perform a variety of functions safely and effectively, making them an outstanding choice for you and your patients.

---

---

### Traditional Three-Position Recliner

Model # IH6074A

The IH6074A three-position recliner offers exceptional comfort and durability for day room or patient room environments. The full recline, leg-ottoman elevated and full upright positions provide maximum flexibility for patients. A convenient push bar on the chair back and four rolling casters allow for easy movement. The two rear steering casters may be locked to secure the chair in place.

### Features

Footrests fold completely under chair, allowing the patient to rise to a standing position more easily  
Blow-molded side panels remove quickly, with press pins, for easy cleaning  
Convenient overlap tray included. Tabs allow tray to move freely  
Articulating headrest joins patient to social field of vision  
Flame retardant upholstery – meets California Technical Bulletin 117 standard



1. Full recline position



---

### Clinical Recliner

Model # IH6077A

The IH6077A clinical recliners are an ideal choice for use in dialysis, blood collection, same-day surgery, EKG, oncology, chemotherapy and respiratory care areas. The non-locking reclining mechanism and soft padding allow the patient to sit comfortably for prolonged periods of time in a full upright, leg-elevated or full recline position. The gas spring cylinders allow for Trendelenberg position. The high-strength vinyl upholstery is easy to clean and impervious to fluids. Maneuverability is achieved through four swivel casters, and the rear casters lock in place to secure the chair.

### Features

Two convenient side tables for holding prep materials  
Footrests fold completely under chair, allowing the patient to rise to a standing position more easily  
Blow-molded side panels remove quickly, with press pins, for easy cleaning  
Gas cylinder for instant Trendelenberg positioning for shock patients  
Articulating headrest joins patient to social field of vision  
Flame retardant upholstery – meets California Technical Bulletin 117 standard



1. Full recline position



---

## Deluxe Three-Position Recliner

Model # IH6065 (A, WD)

The IH6065 series deluxe three-position recliners are loaded with features and designed with patient ergonomics in mind. Special padding technology provides a long life of comfort and support for the seating surface. The back of the recliner features lumbar support for maximum comfort. Patients will appreciate the articulating headrest that comfortably supports the neck and head. The full-recline, leg-ottoman elevated and full upright positions provide

maximum comfort for patients. A convenient push bar on the chair back and four rolling casters allow for easy movement. Available in two sizes (adult, wide), providing a variety to fit every patient. The rear locking casters and front swivel casters make this recliner easy to move and position. The two rear steering casters may be locked to secure chair in place. An overlap tray stores on the side and folds out of the way (adult model only).

## Features

Footrests fold completely under chair, allowing the patient to rise to a standing position more easily

Blow-molded side panels remove quickly, with press pins, for easy cleaning

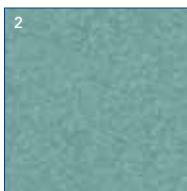
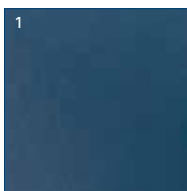
Convenient overlap tray included (adult model only). Tabs allow tray to travel freely or lock in position

Articulating headrest joins patient to social field of vision








Flame retardant upholstery – meets California Technical Bulletin 117 standard



1. Articulating headrest
2. Full recline position



1. #61 Blueridge
  2. #68 Jade
  3. #60 Rosewood
-

Model #	 Dimensions HxWxD	 Seat Dimensions WxD	 Seat-to-Floor Height	 Seat-to-Back Height	 Tray Dimensions WxL	 Weight	 Weight Capacity
IH6074A	47"x24.25"x40"	19"x19.5"	21.5"	32"	25.5"x15"	250 lb.	73 lb.
IH6065A	46"x27.5"x41"	18.75"x19.75"	21"	32"	25.5"x15"	250 lb.	86 lb.
IH6065WD	46"x27.5"x41"	22.75"x19.75"	21"	32"	N/A	400 lb.	86 lb.
IH6077A	49"x30.75"x38"	31"x19.5"	22"	32"	10"x19"	250 lb.	89 lb.

	 Shipping Weight	 Carton Dimensions LxWxH	 Limited Warranty
IH6075A	86 lb.	40"x32"x29"	3 Years Chair 1 Year Upholstery
IH6065A	105 lb.	37"x29"x29"	3 Years Chair 1 Year Upholstery
IH6065WD	105 lb.	37"x29"x29"	3 Years Chair 1 Year Upholstery
IH6077A	105 lb.	40"x32"x29"	3 Years Chair 1 Year Upholstery 1 Year Gas Cylinder