

# JAY<sup>®</sup>

## ZIP<sup>™</sup> BACK & CUSHION

≡ Clinical seating, designed for zippie kids!

Jay Zip Backrest and Cushion  
shown on Zippie Zone chair.



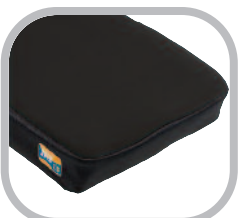
# JAY® ZIP™ CUSHION & BACK

- ≡ The JAY Zip cushion and backrest were designed through the use of anthropometric data so they are specially sized to meet a pediatric client's unique needs. The Zip cushion is a dual layered contoured foam base that provides skin protection and positioning in a comfortable, effective and convenient package. The Zip backrest is an ultra lightweight, antimicrobial backrest that features X-static™ and Aquaguard™ cover technologies as well as adjustable, one step release hardware to accommodate a wide range of mounting locations and user presentations.

## Jay Zip Back

### Versatile One Step Release Hardware

- Easy one step release
- Fits on wide range of tubing: 3/4" with inserts, 7/8" with inserts or 1" without inserts
- One tool adjustments



## Jay Zip Cushion

### Comfortable

- Dual layered contoured foam base
- Reticulated foam in the outer cover promotes air movement
- Soft, stretchable outer cover



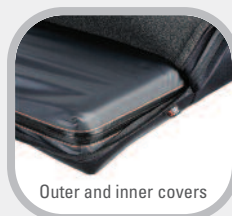
## Convenient and Antimicrobial

### Outer cover:

- Silver impregnated X-static® stretch fabric naturally inhibits bacterial growth
- Extra layer of microclimatic spacer fabric for comfort
- Machine washable and quick to dry
- Two outer covers included (cushion only)
- Safe non-toxic material

### Inner cover:

- Easy to wipe off
- Aquaguard™ zipper resists moisture
- Anti-wicking seam thread protects foam base



## JAY® SPECIFICATIONS

JAY Zip Cushion	
HCPCS Code	E2607
Weight Capacity	165 lbs.
Weight	1.2 lbs (12" x 12")
Product Width	8" – 16"
Product Depth	8" – 18"
Product Height	2.75"

JAY Zip Back	
HCPCS Code	E2613
Weight Capacity	165 lbs.
Weight	2.5 lbs. (12" x 12")
Product Width	8", 10", 12", 14"
Product Height	6", 8", 10", 12"
Depth Adjustability	3" (anterior)
Back Angle	+20° to -20°
Width Adjustability	+1"