

Seating

Standing

Sleeping

Therapy



Atom by Jenx

Modern, child-centered styling, combined with a comprehensive range of support options make Atom the ideal seating system to develop correct seating posture and function.

Key features

- Adjustable flip-away hip support pads
- Tool-free adjustments
- Memory foam ischial well

Age Range: 6 months to 5 years
Back Angle (posterior - anterior) : 15° - 15°
Max user weight: 55lbs

Always Supportive...



Atom by Jenx

Modern, child-centered styling, combined with a comprehensive range of support options make Atom the ideal seating system to develop correct seating posture and function.

Wipe clean covers as standard mean any messy play or other soiling can be easily cleaned; antimicrobial agents in the covers provide additional peace of mind when Atom is placed in a multi-user environment.

Recognizing that children grow and develop at the quickest rate in their infant years, all support structures are tool free and easily adjusted, added or removed. This ensures each child is getting the correct support at any given time and can accommodate changes in their postural needs.

Adjustable Flip-away Hip Support Pads

Included as standard with the Atom seat unit. Adjustable in height, width and angle, ideal for accommodating an abducted seating posture if required.

INNOVATIVE FEATURE

Shoulder Protractors

Width and height adjustable Shoulder Protractors encourage correct shoulder and arm positioning to help promote a functional hand position for play.

INNOVATIVE FEATURE

Flexible Thoracic Supports

Available in a range of sizes, these slimline and super flexible support pads are designed to mimic the feeling of being held. All come mounted on a high-rise flip-away bracket which is easily adjusted to aid transfers.

INNOVATIVE FEATURE

Open Sides

Open sides to the chair ensure adjustments are easily made and allows the user to remain seated with little interruption.

INNOVATIVE FEATURE

Memory Foam Ischial Well

Designed to nestle the pelvis, the memory foam not only provides comfort and pressure distribution, but also stability to promote correct pelvic alignment.

INNOVATIVE FEATURE



Flip-up Angle Adjustable Footplate

To accommodate or encourage dorsi or plantar flexion. Adjusts quickly and simply with the turn of a dial, flips up for safe and easy transfers with the footplate held out of the way with a concealed magnet. Easy-fit slots makes attaching Sandals and other foot support options a breeze.

INNOVATIVE FEATURE



Atom Seat Unit



Atom Seat Unit

Suitable for children from approx. 6 months to 5 years, the Atom seat unit provides all the basics for a solid seating foundation, including:

- Adjustable flip-away hip support pads
- Push handle
- Upper back pad
- Padded seat with memory foam ischial well made from antimicrobial wipe-clean fabric
- Shaped back pad

Base

Y-Base

The most flexible base in the Jenx range, the Y-Base offers a height range of 11" - 30" alongside tilt-in-space functionality and lockable swivel casters. Tilt-in-space 30° posterior - 10° anterior. Available in white only.

White: JM01-06



Always Configurable Accessories

Please note: Any accessory codes ending in '-XX' require a color choice. Please replace '-XX' with either: -01 (Blue) -02 (Pink) -03 (Green) -04 (Red).



Multigrip™ Headrest

The original and innovative Jenx Multigrip™ headrest is available in 3 sizes for all Jenx seating systems. Provides adjustment for height, depth and angle.

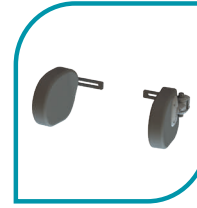
1 Link: MH10-XX 11½"(l) x 2¾"(h)
2 Link: MH11-XX 17¾"(l) x 2¾"(h)
3 Link: MH12-XX 24"(l) x 2¾"(h)



Contoured Headrest

A headrest offering mild mid-line contouring for children who require minimal head support.

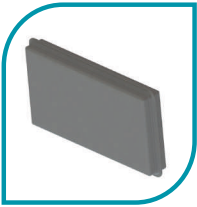
MH13-XX 7¾"(w) x 3"(h) x 2"(d)



Shoulder Protractors

Comfort style Shoulder Protractors encourage a functional mid-line hand position and prevent excessive retraction. Completely flip-away when not required. Independently adjustable for width and angle.

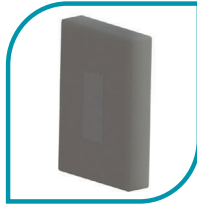
SS00-XX 5½"(w) x 5¼"(h) x 2"(h)



Lumbar Pad

Simply attach into place by hook and loop fastener to give additional lumbar support.

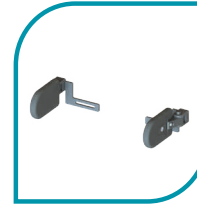
AT01 019 8"(l) x 4"(h) x 1"(d)



Back Pad Infill

The Back Pad Infill reduces the seat depth for smaller children. Simply attach by hook and loop fastener behind the standard 1" back pad - easily removed when no longer needed.

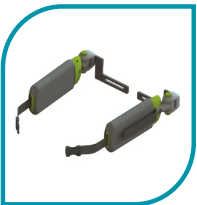
AT01 020 7¼"(w) x 10½"(h) x 2"(d)



High-rise Thoracic Support Pads

These short, slim trunk support pads are made from hygienic PU. There is a single-handed, push button, flip-away action on all supports and they are independently adjustable for height and width.

NB17 5"(l) x 3"(h) x ¾"(d)



High-rise Flexible Thoracic Support Pads

These slimline and super flexible support pads (with straps) are designed to provide outstanding positioning with comfort in mind.

Size 1: THC08-XX 7½"(l) x 3"(h) x 1"(d)
Size 1 S: THC019-XX 5¾"(l) x 3"(h) x 1"(d)
Size 1 L: THC010-XX 8½"(l) x 3"(h) x 1"(d)



Armrests

The Armrests are independently adjustable for height and angle. Soft coloured Armrest Covers are also available.

Grey: AT01 015-04-XX
White: AT01 015-08-XX
Covers: COV030-XX
 2½"(w) x 9¾"(l) x ¾"(d)



Waistcoat Harness

Provides additional trunk support to children with low tone. An innovative zip system allows for easy-access to gastrostomy feed tubes, including a wipe-clean outer surface fabric.

Size 1: HB61
 9½"(w) x 11"(h) x 5¼"(zip length)
Size 2: HB62
 11"(w) x 12½"(h) x 6"(zip length)



Nursery Tray

A useful surface for work, feeding or play. Made from food grade plastic providing a hygienic and easy to clean surface. Contrasting tray edging gives a definitive boundary.

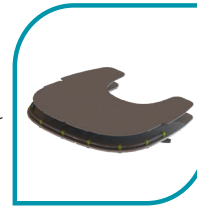
AT05-XX 22¾"(w) x 19"(d)



Nursery Tray Overlay

Designed to work with the Nursery Tray, the Tray Overlay provides the perfect surface for use with suction toys, anchors or grab bars.

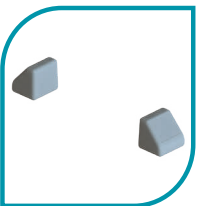
PL009 027 22¾"(w) x 19"(d)



Reduced Cut-out Tray Infill

Designed to work with the Nursery Tray to reduce the aperture for smaller children. Perfect surface for use with suction toys, anchors or grab bars. Prevents even the slimmest of arms from falling into gaps.

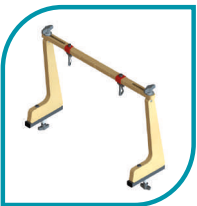
PL009 025 22¼"(w) x 18½"(d)



Tray Elbow Blocks

Used to encourage arms into a midline position and/or to block excessive retraction.

NT09 4"(w) x 3¾"(h) x 3½"(d)

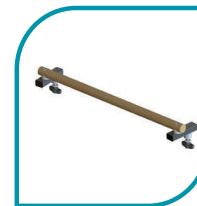


Activity Frame

Great for encouraging head control and hand/eye coordination. Easy to attach and adjust. Comes with two clips for attaching toys or other items.

NB: Nursery Tray required for use.

GT10 21¼"(l) x 13¾"(w)



Grab Bar

Perfect for children who need to fix one hand to increase functionality.

NB: Nursery Tray required for use.

GT09 21¼"(l) x 3¾"(w) x 2¾"(d)



3 point Lap Strap

A lap strap with the additional safety of a groin harness. Ideal for smaller users.

HB63



4 Point Lap Strap

Provides additional pelvic control by allowing a more tailored position. Use in conjunction with the Lumbar Pad to ensure an anterior tilt on the pelvis.

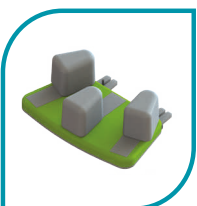
HB17



Abduction Block

Available in 2 sizes, the Abduction Block is ideal for creating separation between the knees to prevent adduction.

Size 0: GL24 3½"(w) x 5¾"(h) x 3½"(d)
Size 1: GL06 4"(w) x 6"(h) x 7"(d)



Long-leg Sitting Board

Easily attached and removed with just 2 wing knobs, the Long-leg Sitting Board can be used permanently or intermittently for very young children or those needing hamstring stretch.

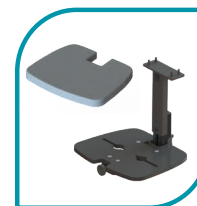
AT01 018-XX
 14½"(w) x 5"(h) x 8"(d)



Leg Control Pads

Perfect for controlling leg positioning. Each leg is guttered in a soft, adjustable cup which can be adjusted for width and angle. Ideal for controlling windsweeping or creating an abducted seating position.

AT01 016 11¼"(w) x 4¾"(h) x 3¾"(d)



Flip-up Angle Adjustable Footplate

Effortlessly flips to aid in transfers. Ideal for where plantar or dorsi flexion accommodation is required.

Footplate: AT01 003
Pad: AT01 013
 11½"(w) x ½"(h) x 9¼"(d)

Accessories continued



Sandals

Available in 2 different sizes to accommodate any size of foot, even when wearing splints, Jenx sandals are interchangeable across the entire range of Jenx seating and standing products.

Size 1: S16 3¼"(w) x 6¾"(d)
Size 2: S2 3¾"(w) x 8½"(d)



Booties

Booties provide gentle and comfortable support for tiny feet even without shoes. They are soft and padded with no fiddly straps, press studs or buckles.

S5 3½"(w) x 2¾"(h) x 5½"(d)



Ankle Snugs

An optional foot positioning accessory to the standard sandal. The Ankle Snug offers a unique magnetic buckle fastening mechanism, which can be operated single handed.

Size 1: S18
Size 2: S20



Sandal Raising Blocks

Available for every size of Jenx sandals, the raising block kits give the sandals that extra bit of height where needed! Use to accommodate for leg length discrepancy or use to raise the height of the footplate on any product to maximize the available growth.

NB: One kit needed per individual sandal.

Size 1: SRB1 3¼"(w) x 6¾"(d)
Size 2: SRB2 3¾"(w) x 8½"(d)

Atom by Jenx Technical Specification

IMPORTANT INFORMATION:

Please be aware, some minimum and maximum measurements are achieved by the use of additional accessory components.

	Units	Atom AT01
Age Range (approx)	mo - yrs	6 mo - 5 yrs
User Weight (max)	lbs	55
Back Angle (posterior - anterior)	degrees	15° - 15°
Back Pad Height from Seat to Top (min - max)	inch	10½ - 15
Chest Width (min - max)	inch	7¾ - 11
Hip Width (min - max)	inch	7 - 10½
Seat Depth (min - max)	inch	3½ - 13¼
Seat Depth with Long Leg Sitting Board (min - max)	inch	12¼ - 22¼
Lower Leg Length with Fixed Angle Footplate (min - max)	inch	6½ - 12¾
Lower Leg Length with Flip Up Footplate (min - max)	inch	4½ - 14
Footplate Angle (dorsi - plantar)	degrees	5° - 35°
Y Base Tilt-In Space Angle (posterior - anterior)	degrees	30° - 10°
Wooden Base Tilt-In Space Angle - High Base and Low Base (posterior)	degrees	20°
Y Base Footprint (width x length)	inch	25½ - 30¾
Wooden Base Footprint (width x length)	inch	19½ - 23½
Y Base Seat Height From Floor (min - max)	inch	11¼ - 29½
Wooden Base Seat Height From Floor (high base / low base)	inch	21½ / 15¾



distributors of

