

Account Information

Date Account Number

Bill To

Phone Number Fax Number

Email Address Buyer

P.O. Number Patient Name

Ship To

Name

Address

City State/Zip Code

Phone Number

Digitized File Name

The information provided in this document is confidential and is intended solely for use by the Ottobock Fabrication Services.

Notes:

OBSS Ortho-Shape Full System

Order Form & Price List

Effective Date 01/01/2017

Before fabrication can begin, we must receive all pages of this order form filled out completely and the digitized file.

OBSS® Ortho-Shape Full System Pre-configured Packages				
<input type="checkbox"/>	6364835	E2617	Finished Custom Back Cushion Package Finished back cushion including carbon fiber look ABS shell, removeable liners for growth adjustability, black patterned fabric upholstery, liner straps, angle adjustable feet fastened to mounting base, mounting hardware	\$2,240
<input type="checkbox"/>	6364836	E2609	Finished Custom Seat Cushion Package Finished seat cushion including carbon fiber look ABS shell, removeable liners for growth adjustability, black patterned fabric upholstery, liner straps, angle adjustable feet fastened to mounting base, mounting hardware.	\$2,240
Also includes the following items. Please check the appropriate box with your choice for each.				
Mounting Kits:				
<input type="checkbox"/>	Flush Mount Kit 7/8"	<input type="checkbox"/>	Flush Mount Kit 1"	
<input type="checkbox"/>	1" Drop Hook w/Stops 7/8"	<input type="checkbox"/>	1" Drop Hook w/Stops 1"	
<input type="checkbox"/>	2" Drop Hook w/Stops 7/8"	<input type="checkbox"/>	2" Drop Hook w/Stops 1"	
<input type="checkbox"/>	3" Drop Hook w/Stops 7/8"	<input type="checkbox"/>	3" Drop Hook w/Stops 1"	

OBSS® Ortho-Shape Back and Seat Cushion Pre-configured Packages with Mid Fit				
The following back and seat cushion packages include an initial patient fit prior to final finishing of cushion.				
<input type="checkbox"/>	6364838	E2617	Custom Back Cushion with Mid Fit Package Finished back cushion including mid-fit carbon fiber look ABS shell, removeable liners for growth adjustability, black patterned fabric upholstery, liner straps, angle adjustable feet fastened to mounting base, and mounting hardware	\$2,240
<input type="checkbox"/>	6364839	E2609	Custom Seat Cushion with Mid Fit Package Finished seat cushion including mid-fit carbon fiber look ABS shell, removeable liners for growth adjustability, black patterned fabric upholstery, liner straps, angle adjustable feet fastened to mounting base, mounting hardware	\$2,240
Also includes the following items. Please check the appropriate box with your choice for each.				
Mounting Kits:				
<input type="checkbox"/>	Flush Mount Kit 7/8"	<input type="checkbox"/>	Flush Mount Kit 1"	
<input type="checkbox"/>	1" Drop Hook w/Stops 7/8"	<input type="checkbox"/>	1" Drop Hook w/Stops 1"	
<input type="checkbox"/>	2" Drop Hook w/Stops 7/8"	<input type="checkbox"/>	2" Drop Hook w/Stops 1"	
<input type="checkbox"/>	3" Drop Hook w/Stops 7/8"	<input type="checkbox"/>	3" Drop Hook w/Stops 1"	

Note: Pre-configured packages approved by PDAC, and therefore can not be modified. Any option not included in the packages that has a separate charge, can always be added. Back and seat must be ordered together. You cannot order a back or seat only.

Itemized Cushions				
Finished Cushions				
<input type="checkbox"/>	6364810	E2617	Finished back cushion including carbon fiber look ABS shell, removeable liners for growth adjustability, black patterned fabric upholstery, liner straps, angle adjustable feet fastened to mounting base	\$2,156
<input type="checkbox"/>	6364815	E2609	Finished seat cushion including carbon fiber look ABS shell, removeable liners for growth adjustability, black patterned fabric upholstery, liner straps, angle adjustable feet fastened to mounting base	\$2,156
Finished Cushion with Mid Fit				
<input type="checkbox"/>	6364820	E2617	Finished back cushion including mid-fit carbon fiber look ABS shell, removeable liners for growth adjustability, black patterned fabric upholstery, liner straps, angle adjustable feet fastened to mounting base	\$2,156
<input type="checkbox"/>	6364825	E2609	Finished seat cushion including mid-fit carbon fiber look ABS shell, removeable liners for growth adjustability, black patterned fabric upholstery, liner straps, angle adjustable feet fastened to mounting base	\$2,156
Fabrication Options				
<input type="checkbox"/>	6364868		Soft Spot (must be noted on digitized file using Where marks and specific measurements)	\$371
<input type="checkbox"/>	6364866		Additional reinforcement of ABS shell (must be ordered with original system)	\$543
Miscellaneous				
<input type="checkbox"/>	6364840		Additional finished liner	\$438
<input type="checkbox"/>	481A00=2219		Digitizing Service Fee *	\$357

* No Discounts Apply

Miscellaneous and Mounting Hardware

Mounting Hardware	Part #	MSRP/Each	# Required to Mount Cushion
Seat and Back Individual Pieces			
Qty:			
<input type="checkbox"/> Flat Bracket Assembly	477C10=FB001	\$43.00	4 – (2 seat, 2 back)
<input type="checkbox"/> 1" Drop Hook	477C10=DH001	\$27.00	4 – (2 seat, 2 back)
<input type="checkbox"/> 2" Drop Hook	477C10=DH002	\$27.00	4 – (2 seat, 2 back)
<input type="checkbox"/> 3" Drop Hook	477C10=DH003	\$27.00	4 – (2 seat, 2 back)
<input type="checkbox"/> Left Slide Bracket*	477C10=SBL01	\$82.00	4 – (2 seat, 2 back)
<input type="checkbox"/> Right Slide Bracket*	477C10=SBR01	\$82.00	4 – (2 seat, 2 back)
<input type="checkbox"/> Swing-away lateral hardware	471C49=PBBKIT	\$427.00	
*For back cushion			
Knob Release, Adjustable Mounting Kits			
Qty:			
<input type="checkbox"/> OBSS Seat Mount Kit for 1" tubing	471C49=OBSK88	\$558.00	<i>Includes:</i> (4) seat clamps & (4) seat forks
<input type="checkbox"/> OBSS Back Mount Kit for 1" tubing	471C49=OBBK88	\$571.00	<i>Includes:</i> (4) back clamps, (2) left forks, (2) right forks
<input type="checkbox"/> OBSS Seat & Back Mount Kit for 1" tubing	471C49=OBSBK88	\$707.00	<i>Includes:</i> Seat-2-Back hinge, (2) seat clamps, (2) seat forks, (2) seat tabs, (2) back clamps, (1) back left fork, (1) back right fork
Quick Release, Non-adjustable Mounting Kits			
Qty:			
<input type="checkbox"/> Flush Mount Kit – 7/8"	471C49=NT-K-FH78	\$245.00	1
<input type="checkbox"/> Flush Mount Kit – 1"	471C49=NT-K-FH88	\$245.00	1
<input type="checkbox"/> 1" Drop Hook with Stops Kit – 7/8"	471C49=NT-K-DH178	\$264.00	1
<input type="checkbox"/> 1" Drop Hook with Stops Kit – 1"	471C49=NT-K-DH188	\$264.00	1
<input type="checkbox"/> 2" Drop Hook with Stops Kit – 7/8"	471C49=NT-K-DH278	\$276.00	1
<input type="checkbox"/> 2" Drop Hook with Stops Kit – 1"	471C49=NT-K-DH288	\$276.00	1
<input type="checkbox"/> 3" Drop Hook with Stops Kit – 7/8"	471C49=NT-K-DH378	\$288.00	1
<input type="checkbox"/> 3" Drop Hook with Stops Kit – 1"	471C49=NT-K-DH388	\$288.00	1
Replacement Parts for Mounting Kits			
Qty:			
<input type="checkbox"/> Knob Release Back Clamp – 1"	471C49=KRBC	\$77.00	4/Back
<input type="checkbox"/> Back Fork – Standard – Left Side	471C49=NT00103-L	\$41.00	2/Back
<input type="checkbox"/> Back Fork – Standard – Right Side	471C49=NT00103-R	\$41.00	2/Back
<input type="checkbox"/> Knob Release Seat Clamp – 1"	471C49=NT-KRSC88	\$77.00	4/Seat
<input type="checkbox"/> Seat Fork – Standard	471C49=NT-00104	\$41.00	4/Seat
<input type="checkbox"/> Flush, Seat-to-Back hinge, each	471C49=STBHF	\$117.00	1 to connect

Chest Belts				
Padded H-Belt	E0960	Extra Small: <input type="checkbox"/> 471C49=PB-HBXS Small: <input type="checkbox"/> 471C49=PB-HBS Medium: <input type="checkbox"/> 471C49=PB-HBM Large: <input type="checkbox"/> 471C49=PB-HBL Extra Large: <input type="checkbox"/> 471C49=PB-HBXL		\$156
Dynamic H-Belt	E0960	Small: <input type="checkbox"/> 471C49=PB-DHBS Medium: <input type="checkbox"/> 471C49=PB-DHBM Large: <input type="checkbox"/> 471C49=PB-DHBL Extra Large: <input type="checkbox"/> 471C49=PB-DHBXL		\$188
Butterfly Chest Belt	E0960	Extra Small: <input type="checkbox"/> 471C49=PB-BFXS Small: <input type="checkbox"/> 471C49=PB-BFS Medium: <input type="checkbox"/> 471C49=PB-BFM Large: <input type="checkbox"/> 471C49=PB-BFL		\$171
Dynamic Butterfly Chest Belt	E0960	Extra Small: <input type="checkbox"/> 471C49=PB-DBFXS Small: <input type="checkbox"/> 471C49=PB-DBFS Medium: <input type="checkbox"/> 471C49=PB-DBFM Large: <input type="checkbox"/> 471C49=PB-DBFL Extra Large: <input type="checkbox"/> 471C49=PB-DBFXL		\$201

Pelvic Belts				
<input type="checkbox"/> 471C49=PB-PHB-P	E0978	Padded Hip Belt – Pediatric – 1-1/2" x 44" w/ auto style buckle		\$45
<input type="checkbox"/> 471C49=PB-PHB-A	E0978	Padded Hip Belt – Adult – 2" x 48" w/ auto style buckle		\$54
Padded Hip Belt – Center Pull	E0978	1" Mini Metal Buckle: <input type="checkbox"/> 471C49=PB-PHBXS-CP Small: <input type="checkbox"/> 471C49=PB-PHBS-CP Medium: <input type="checkbox"/> 471C49=PB-PHBM-CP Large: <input type="checkbox"/> 471C49=PB-PHBL-CP Extra Large: <input type="checkbox"/> 471C49=PB-PHBXL-CP		\$112
Four Point Hip Belt – Center Pull	E0978	Extra Small: <input type="checkbox"/> 471C49=PB-4PXS-CP Small: <input type="checkbox"/> 471C49=PB-4PS-CP Medium: <input type="checkbox"/> 471C49=PB-4PM-CP Large: <input type="checkbox"/> 471C49=PB-4PL-CP		\$137

Headrests				
<input type="checkbox"/> 430C3=1-7	E0955	Large, X-Style Headrest		\$134
<input type="checkbox"/> 430C4=1-7	E0955	Small, X-Style Headrest		\$134
<input type="checkbox"/> 430H1=1-7	E0955	Large Headrest		\$127
<input type="checkbox"/> 430H1=3-7	E0955	Small Headrest		\$127
<input type="checkbox"/> 471C49=HR-CPAD	E0955	Concave Padded Headrest <input type="checkbox"/> Small <input type="checkbox"/> Medium <input type="checkbox"/> Large		\$198

Hardware				
<input type="checkbox"/> 476L52=SK010	E1028	Multi-axis offset, Silver		\$201
<input type="checkbox"/> 476L52=SK015	E1028	Multi-axis offset, Black		\$201
<input type="checkbox"/> 471C49=HR-RNL-BRKT	E1028	Rock-n-Lock, Black		\$431
<input type="checkbox"/> 471C49=HR-FDBRKT	E1028	Flip-down, Black		\$369

Custom Cushion Fabrication Protocol

Please review the following Fabrication Protocol. Our fabrication staff has compiled this protocol information in an effort to help you better understand what you can expect from Ottobock regarding your requested fabrication. We understand how important an accurate fit is to your client, and this information will help us to best meet your client's needs.

Requirements for Manufacturing

What we need from you to produce High Quality Seating:

- A good quality digitized file without loops in the lines and lines not crossing each other.
- Generate a surface and check if the surface meet your expectations. If not, go back and modify the lines.
- If you are making a seat with well defined armrests the area between the arms and chest may not be smaller than 1.5" because the carving tool diameter is 39.4 mm. If the area is thinner than 1.5" the tool is not able to carve the full depth.
- If there is a medial knee support it's important to not make it too high because both the ABS and the liners get thinner as the pommel gets higher.
- All of our ABS-seats are produced without undercut to the Styrofoam mould. If you need negative shapes it's very easy to form the ABS and the liners afterwards with an ordinary heat gun.

What's included in a Mid-Fit ABS?

- Two liners made of Plastazote without fabric
- One vacuum-formed ABS shell
- Four angle-adjustable feet mounted between the ABS shell and a high quality plywood board.

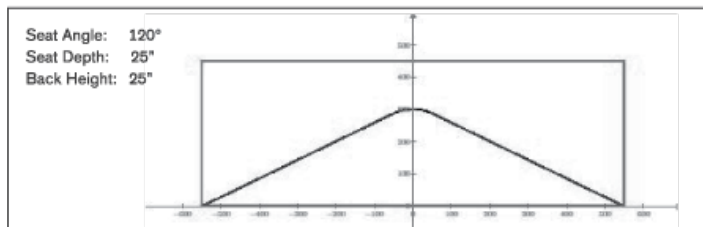
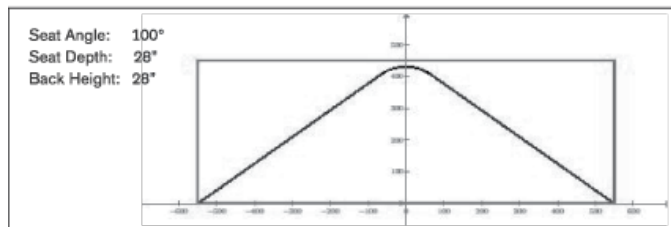
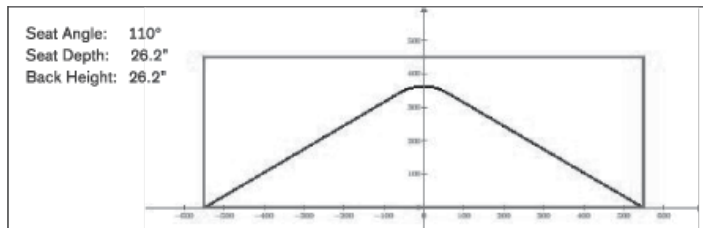
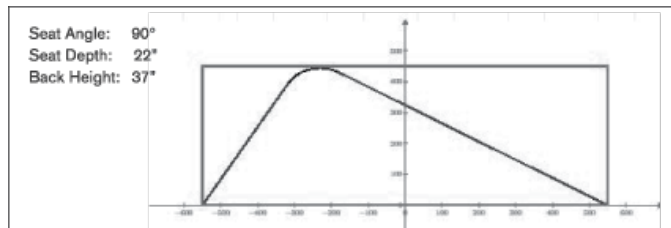
Reinforcement Protocol

- All reinforcements are made from two layers of ABS.

Additional Charges

- Custom options not listed on order form are available at \$197.00 an hour (code #6364505).
- Digitizing an image from a cast is \$243.00 (code #6364930).

Maximum cushion dimensions based on desired seat to back angle



Data sheet	
ABS seat	
Basic seat:	1 ABS shell 1PZ liner no. 1 1 PZ liner no. 2
Mounting options:	
Wooden base plate	Cut to width of wheelchair seat
Material used:	
Standard seat	ABS origin thickness ~5/16" – 3/8" Plastazote x2 origin thickness ~11/16" – 3/4"
Standard reinforcement	ABS origin thickness ~9/16" laminated Plastazote x2 origin thickness ~11/16" – 3/4"
Washing instructions:	
ABS shell	Commonly used detergents and water
Liners	Handwash with soap Rinse with water and hang to dry; avoid heat source (e.g., radiators)
Fabrics used	
Color	black patterned
Composition	100% polyester (Trevira CS surface fabric) Weight: 510 g/qm Width: 155 cm