

ACCESS

QUICKIE®



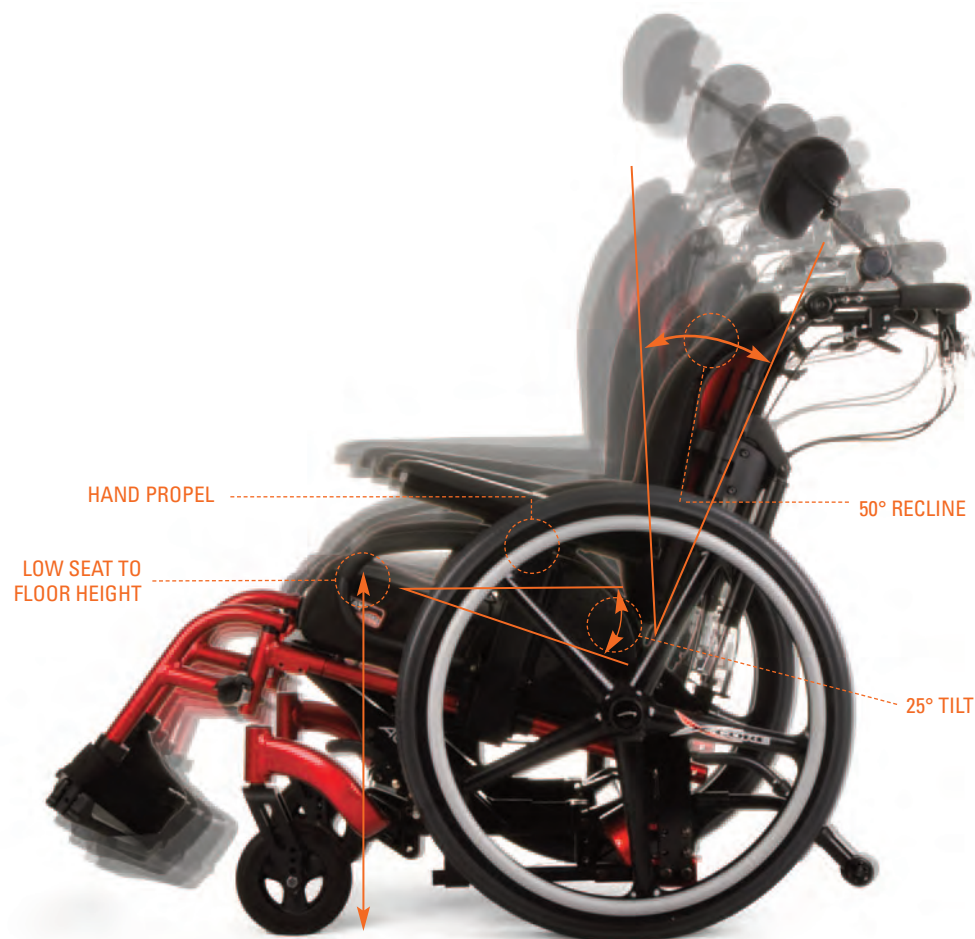
ACCESS

Better ACCESS to life



QUICKIE ACCESS

INDEPENDENT PROPELLING with the BENEFITS OF TILT



INDEPENDENCE

Ability to foot or hand propel.

ACCESS

Roll under tables with the low seat to floor height.

PRESSURE RELIEF

Up to 25° tilt and 50° recline.



Shown with JAY Fusion® cushion,
JAY J3® back and Whitmyer® Plush head support.



Anterior Tilt

The only chair with 5 degrees of anterior tilt for easy standing and transferring.



Low Seat-To-Floor-Height

Even if a thick cushion is needed for pressure relief or if larger casters are preferred, a low seat-to-floor height can be maintained



Positioning Options

Large offering of JAY and Whitmyer seating and positioning options to meet individual needs



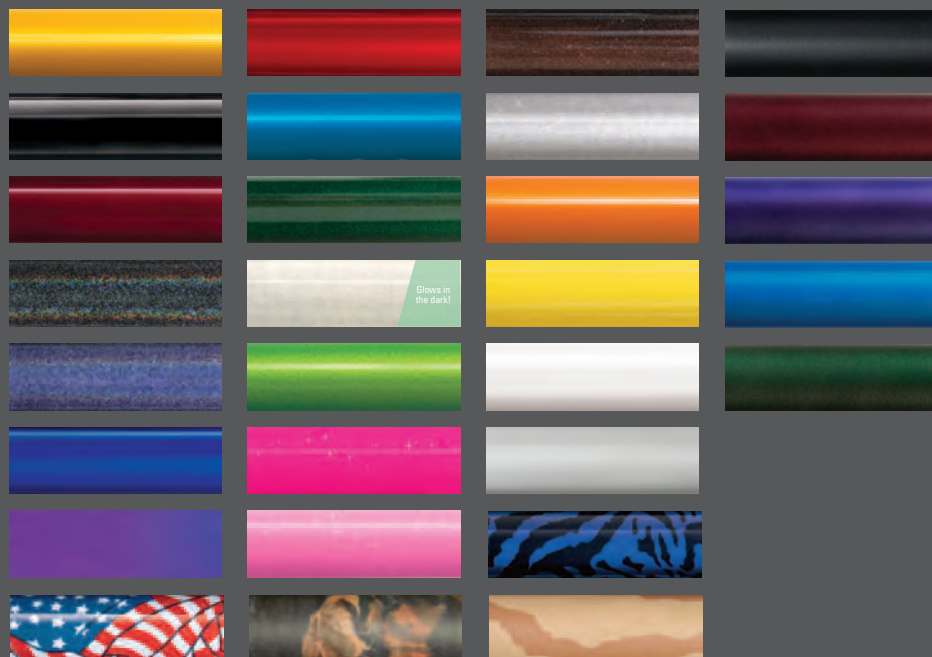
Portable

With a transport weight of 32 lbs. and fold down back, the ACCESS can be easily lifted in and out of vehicles for access outside of the home.

QUICKIE Paint Colors

HIGH GLOSS COLORS

MATTE FINISH COLORS



NOTES:

Print processes cannot accurately represent paint finishes. Actual colors may vary.

Colors and patterns may vary based on type of chair or frame material.

Not all colors available on all products. Please see product order form for specific color options.

ACCESS Specifications

HCPC code	E1161 / E1233
Tilt Range	-5° to 20° 0° to 25°
Seat width	14" to 22"
Seat depth	14" to 22"
Seat-to-floor height	12" to 20"
Recline Back Angle	50° to 0°
Transport Weight*	32 lbs.
User Weight Capacity	300 lbs.
Transit Approved	Yes

* 16 x 16 with armrests, footrest & rear wheels removed.

See order form as specifications may vary based upon configuration.



Sunrise Medical (US) LLC, Fresno, CA 93727
MK-130005 Rev.A ©06.2022

