

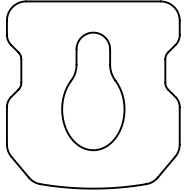
# RAZ - CUSTOM SEAT ASSESSMENT FORM



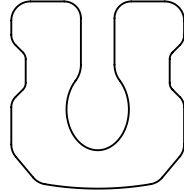
Client: \_\_\_\_\_ Chair Model:  AP/SP  AT  CAT  AP/SP600  AT600

Reference #: \_\_\_\_\_ Serial #: \_\_\_\_\_

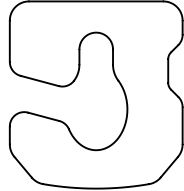
Access Opening: Select one if applicable



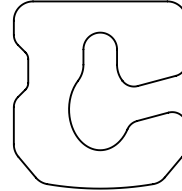
Bridged Front



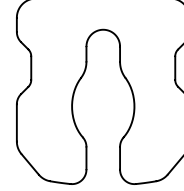
Front Open



Left Open

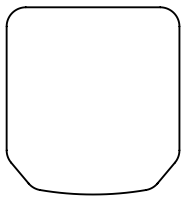


Right Open

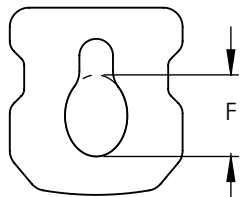


Rear Open

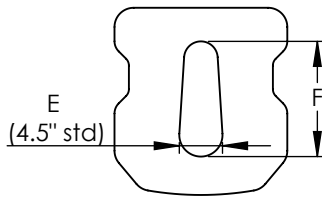
Aperture Shape: Select one



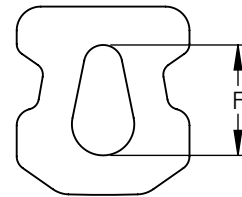
No Aperture



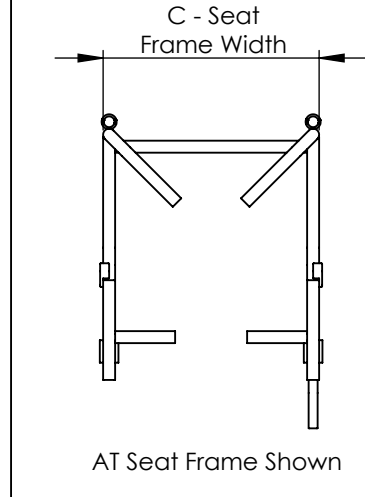
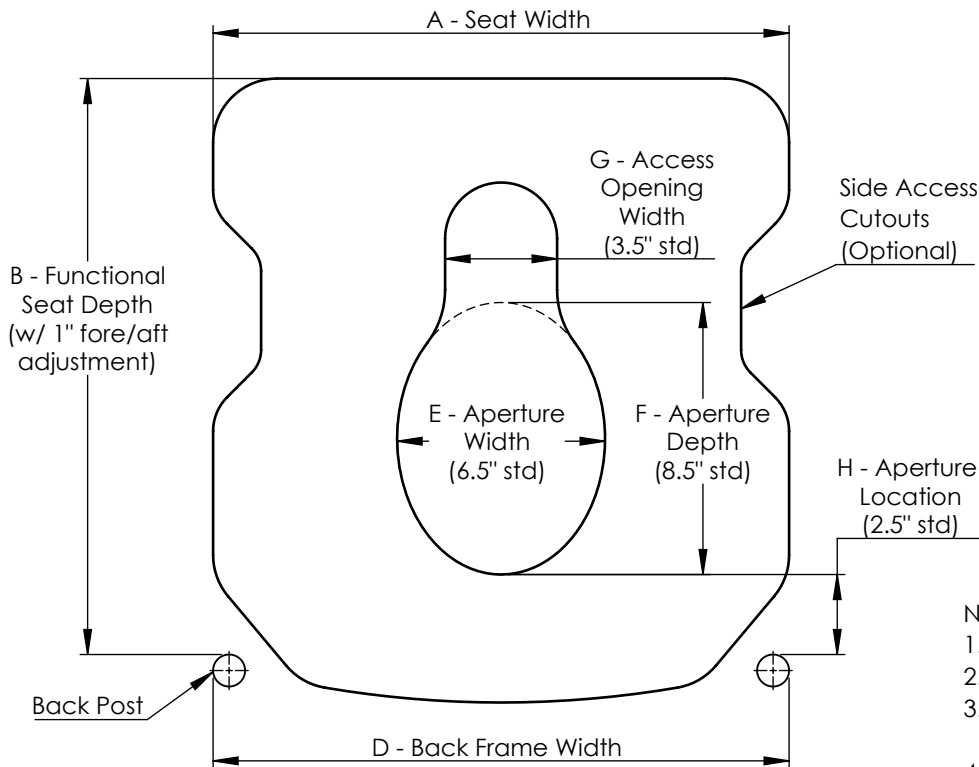
Keyhole - Standard



CAT - Style



EJR - Style



Notes:

1. Keyhole Style Aperture Shown
2. Specify Units (  Inch  mm )
3. Seat width can be up to 2" wider than seat frame
4. Call for other customization options

A	Seat Width:	E	Aperture Width:
B	Seat Depth:	F	Aperture Depth:
C	Seat Frame Width:	G	Opening Width:
D	Back Frame Width:	H	Aperture Location:

Comments: