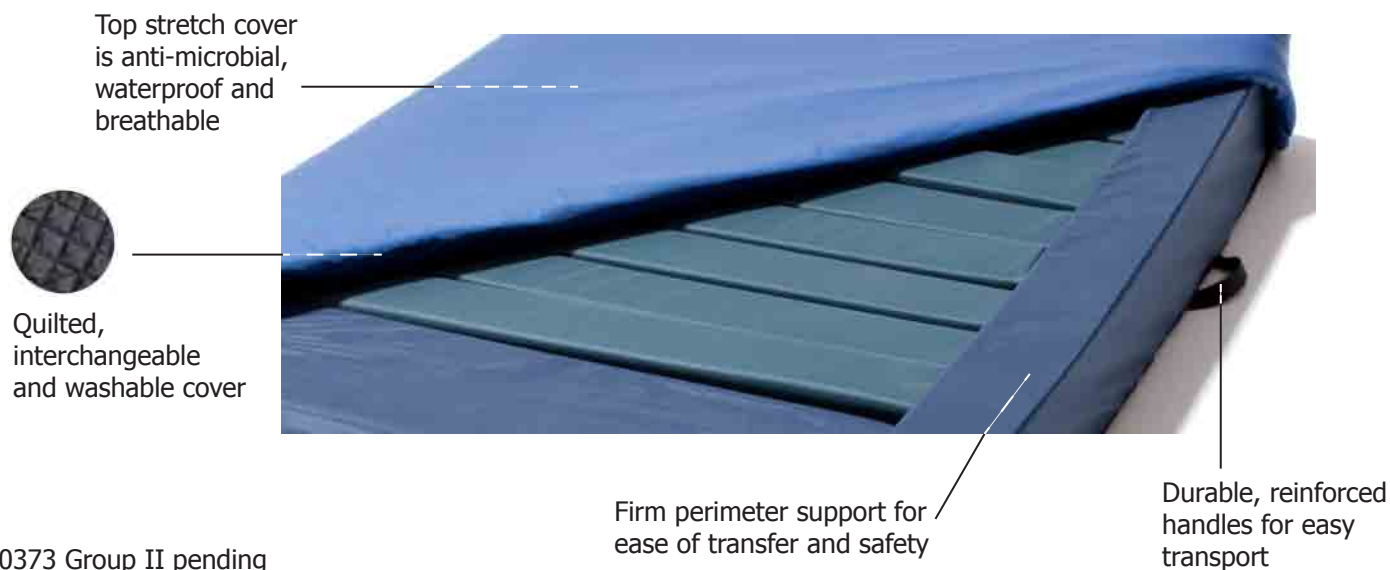


# FUSION 1K™

Featuring Dynamic Dispersion™

The first non-powered therapy mattress that converts to "true" low air loss therapy.

Dynamic Dispersion™ (DD) - differs from all other non-powered alternatives. Each air and foam-filled cell communicates to create exceptional envelopment and pressure redistribution.



## DYNAMIC DISPERSION™

### Proven Redistribution Therapy

- Dynamic Dispersion's "closed" technology equalizes and redistributes pressure similar to other proven cellular based technologies.
- The competitor's "open" Self Adjusting Technology™ design exhausts, therefore the individual foam cells shoulder the majority of the load.

### Long Lasting Durability

- Air within the foam-filled interconnected cells supports the patient load therefore increasing the life span of the product.

### Specifications

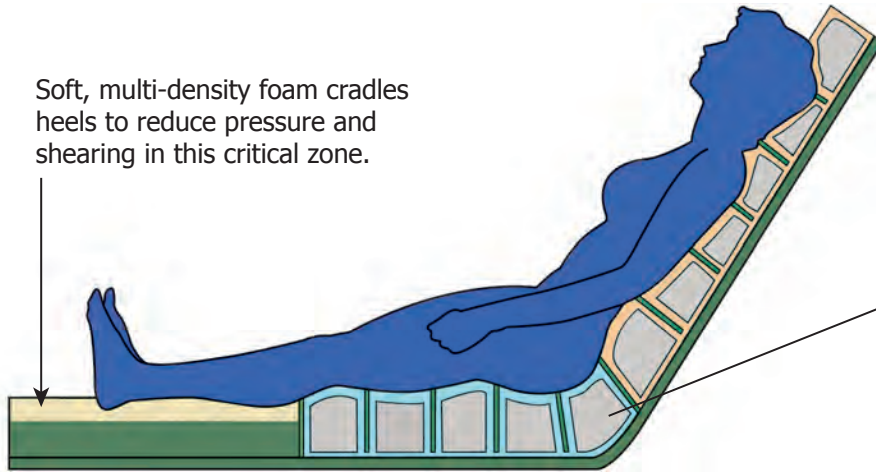
- 500 lbs. weight limit (227 kg)
- 5-year non-prorated warranty; 1-year warranty on cover
- 80" x 36" and 84" x 36" dimensions; 6" height
- Avg. Fusion 1K system weight is approx. 46 lbs (21 kg)



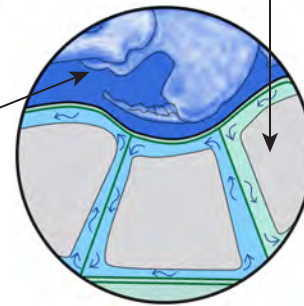
# Dynamic Dispersion™

## how it works...

Soft, multi-density foam cradles heels to reduce pressure and shearing in this critical zone.



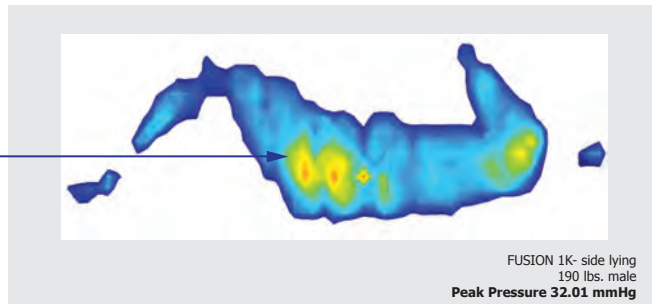
High resilient foam, encapsulated in preset air chambers with air flow control. The individual cells communicate to evenly distribute the patient's pressure over the entire therapy zone.



## FUSION 1K™

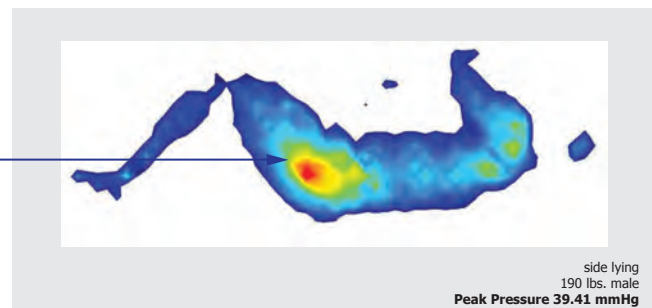
Featuring Dynamic Dispersion™

Although, patient appears larger, points of contact are greater thus increasing pressure redistribution.

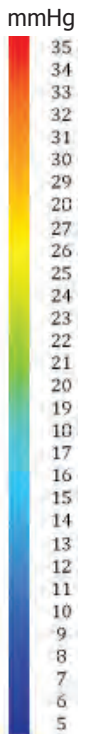


Outstanding envelopment and redistribution of pressure for a non-powered system

Competitive product shows higher peak pressures



The leading Self Adjusting Technology™ competitor



### Need even more therapy?

Easily convert your FUSION 1K into a FUSION 2K for full "hospital grade" true low air loss therapy.

