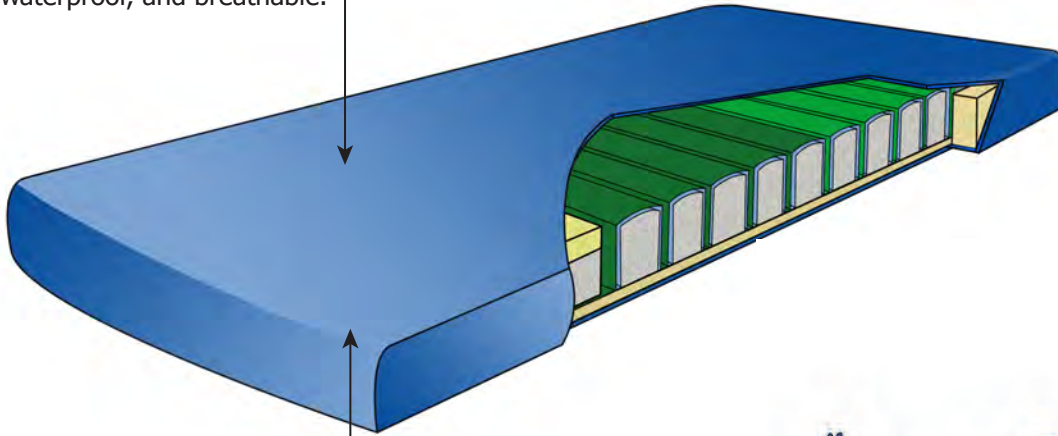


# FUSION<sup>TM</sup> XC

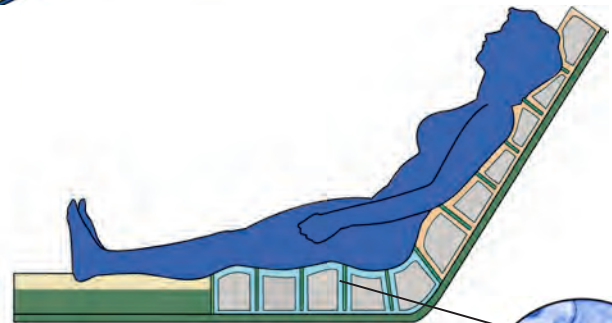
Featuring Dynamic Dispersion<sup>TM</sup>

An economical option to the FUSION 1K non-powered therapy.

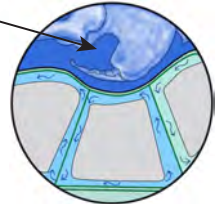
Top stretch cover is anti-microbial, waterproof, and breathable.



Sloped, soft, multi-density foam cradles heels to reduce pressure and shearing in this critical zone.



High resilient foam, encapsulated in preset air chambers with air flow control. The individual cells communicate to evenly distribute the patient's pressure over the entire therapy zone.



## DYNAMIC DISPERSION<sup>TM</sup>

### Proven Redistribution Therapy

- The "closed" system envelopes and redistributes pressure similar to other cellular based technologies.
- The competitor's "open" Self-Adjusting Technology vents making the single foam pieces handle the load individually.

### Long Lasting Durability

- Since the air is supporting the majority of the load, as opposed to the foam, the system is designed to last years beyond the competition.

### Specifications

- 500 lbs. weight limit (227 kg)
- 5-year non-prorated warranty
- 1-year warranty on cover
- 80" x 36" x 6" and 84" x 36" x 6"

## Need even more therapy?

Consider the FUSION 1K which allows for conversion to the FUSION 2K for full "hospital grade" true low air loss therapy.



**FUSION 1K**<sup>TM</sup>  
Featuring Dynamic Dispersion<sup>TM</sup>



**FUSION 2K**<sup>TM</sup>  
Featuring SelectAir<sup>®</sup> Therapy

