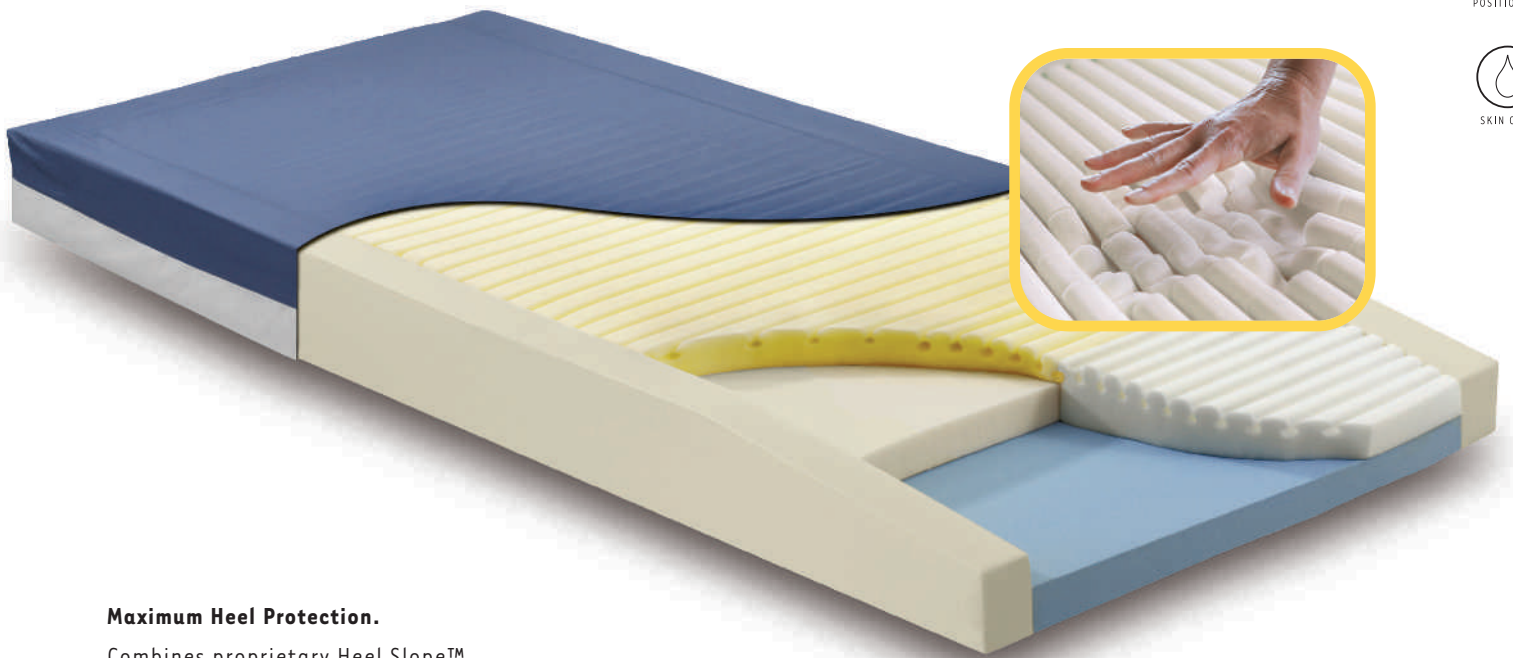


Geo-Mattress® Max

Premium Therapeutic Foam Mattress



Maximum Heel Protection.

Combines proprietary Heel Slope™ and luxurious viscoelastic “memory” foam to deliver unsurpassed offloading of vulnerable heels.

Maximum Safety.

Supportive firm perimeter bolsters facilitate safer patient transfers, help eliminate dangerous gaps, and add stability for edge-of-bed sitting.

Maximum Performance.

Clinically proven Geo-Matt® anti-shear surface, multi-tiered construction, 7-year warranty and 400 lb. capacity make it an exceptional offering.

SPANAmerica
Innovative Solutions.



SURFACES



SEATING



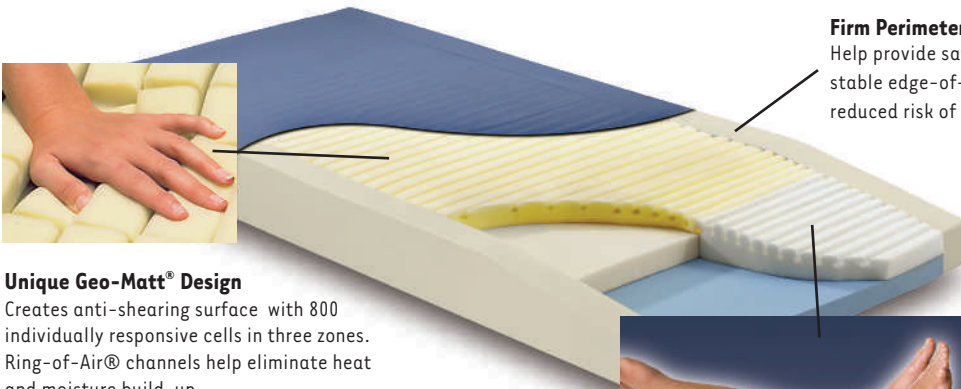
POSITIONERS



SKIN CARE

Geo-Mattress® Max

Premium Therapeutic Foam Mattress



Unique Geo-Matt® Design

Creates anti-shearing surface with 800 individually responsive cells in three zones. Ring-of-Air® channels help eliminate heat and moisture build-up.

- **Multi-tiered, progressive resistance core.**

Premium, high-density foams are combustion-modified for conformance to Cal TB 117.

- **Fluid-repellent, flame-resistant top fabric.**

Anti-microbial and anti-fungal. Neoprene/butyl coated underside yields extremely low moisture vapor transmission rate (MVTR). Conforms to NFPA 702 Class 1 and Cal TB 117E.

- **Exclusive hidden zipper cover design.**

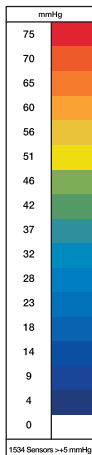
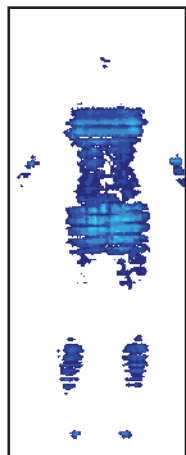
Flapless construction creates no collection points for contaminants. Combines with stain-resistant surface coating to ensure easy, thorough cleaning.

- **Flammability compliant.**

All models are fire barrier version (FBV) as indicated by "-29" suffix, denoting certified conformance to NFPA 101 (Life Safety Code); Cal Tech Bulletin #117; 16 CFR Parts 1632 and 1633; and BFDIX-11.

- **7-year, non-prorated warranty.**

Supports up to 400 lbs.
All materials latex-free.



Computerized Pressure Mapping confirms exceptional pressure distribution, extremely low peak pressures.

Subject cited:
Male, 5'10", 175 lbs.
Supine, with pillow.
(Complete results available upon request).

Firm Perimeter Bolsters

Help provide safer transfers, more stable edge-of-bed sitting, and reduced risk of gaps at siderails.



By Design: Heel Protection Times Two.

Two distinct features to protect vulnerable heels, the site of roughly one third of all pressure ulcers¹:

Exclusive Heel Slope

Subtle taper redistributes load onto more pressure-tolerant lower legs while providing complete foot support. Documented to deliver heel pressures an average of 27% lower than leading competitors².

Viscoelastic foot section.

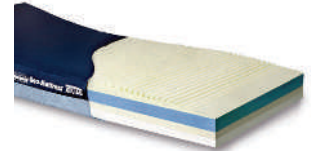
Luxurious, "memory" foam with individually-segmented Geo-Matt design. Enhanced immersion gently cradles heels.

1. Blaszczyk J. Make a Difference: Standardize Your Heel Care Practice. *Ostomy/Wound Management*. 1998;44(5):32-40.
2. McGrew, G. A Comparative Study of Interface Pressures on Two Hospital Polyurethane Foam Mattresses. *Clinical Reports: Series on Skin and Wound Care Management* 1997.

A Geo-Mattress for every need:



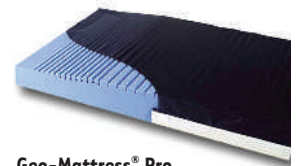
Geo-Mattress with Wings®
Supportive, raised perimeter design.



Geo-Mattress Atlas®
Bariatric support up to 600 lbs.



Geo-Mattress® Plus®
Dual layer, 6-year warranty.



Geo-Mattress® Pro
Single layer, 5-year warranty.

Institutional Sizes		Consumer Sizes	
Item #	Description	Item #	Description
MX8435-29	84"L x 35"W x 6"H	* MX7539-29	75"L x 39"W x 6"H Twin
MX8035-29	80"L x 35"W x 6"H	* MX7554-29	75"L x 54"W x 6"H Full
* MX8032-29	80"L x 32"W x 6"H	* MX8060-29	80"L x 60"W x 6"H Queen
* MX7835-29	78"L x 35"W x 6"H	* MX8076-29	80"L x 76"W x 6"H King
MX7535-29	75"L x 35"W x 6"H	* allow additional lead time for these sizes	
Weight limit: 400 lbs.		Mattress weight: approx. 24 lbs.	
Warranty: 7 years.			