



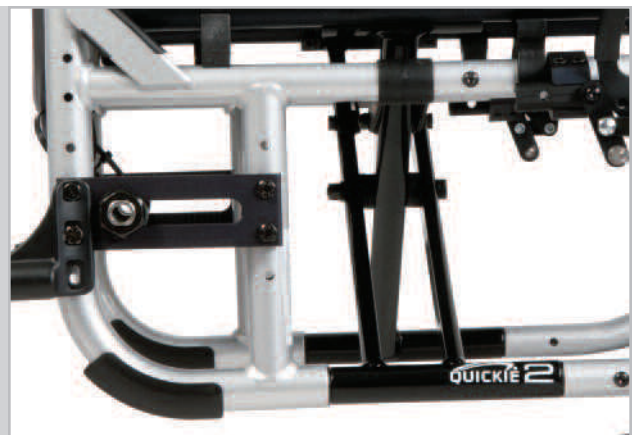
MANUAL WHEELCHAIR

REFERENCE GUIDE

A COMPREHENSIVE
GUIDE TO SELECTING
THE RIGHT QUICKIE
MANUAL WHEELCHAIR



LIVE
WITH
OUT
LIMITS



	RIGID						TILT-IN-SPACE			FOLDING								
	K0005						E1161			K0005				K0004	K0009			
	7 ^{RS}	7 ^R	5 ^R	QRi	GP / GPV	GPSA	IRIS / IRIS SE	SR45	TS / TS SE	Quickie 2 Lite	Quickie 2	Quickie 2 HP	QXi	LXI	LX	M6		
Specifications subject to change without notice.																		
Design	Frame Style	Rigid - Open	Rigid - Open	Rigid - Open	Rigid - Open	Rigid - Traditional	Rigid - Swing-Away	Rotation in Space	Rotation in Space	Tilt	Folding	Folding	Folding	Folding	Folding	Folding		
	Standard Weight†	17.7 lbs (Std. Config.) 9.9 lbs (Transport)	18.9 lbs (Std. Config.) 11.1 lbs (Transport)	21.5 lbs (Std. Config.) 12.9 lbs (Transport)	22 lbs (Std. Config.) 13.4 lbs (Transport)	GP: 23.75 lbs GPV: 23.6 lbs	26 lbs	39 lbs (w/footrests, 18x18)	39 lbs	49 lbs	25.5 lbs (fixed) 27.75 (swing-away)	28.9 lbs	27.9 lbs	28.8 lbs	29.6 lbs	29.6 lbs (w/o footrests)		
	User Weight Capacity	265 lbs	265 lbs	265 lbs	265 lbs	250 lbs*	250 lbs*	250 lbs (Std) 350 lbs (HD)	265 lbs	250 lbs (Std) 350 lbs (HD)	265 lbs	265 lbs - STD 350 lbs - HD	250 lbs	265 lbs.	265 lbs	250 lbs	650 lbs	
Adjustability	Seat Width	12" to 20"	12" to 20"	12" to 20" *	12" to 20"	12" to 22" *	12" to 22" *	14" to 22"	14" to 20"	14" to 20"	14" to 20"	12" to 22" *	11" to 22"	14" to 20"	12" to 20"	12" to 20"	22" to 30"	
	Seat Depth	12" to 20"	12" to 20"	12" to 20" *	12" to 20"	12" to 18" * (GP) 12" to 22" * (GPV)	12" to 22"	14" to 22"	14" to 22"	14" to 22"	14" to 20"	12" to 20" *	10" to 20"	14" to 20"	12" to 20" *	12" to 18"*	18" to 22"	
	Back Angle Adjustment	Fixed	Fore (-) 27° to Aft (+) 8°	Fore (-) 17° to Aft (+) 8°	Fore (-) 17° to Aft (+) 8°	Fore (-) 8° to Aft (+) 4°	Fore (-) 8° to Aft (+) 4°	Fore (-) 5° to Aft (+) 30°	Fore (-) 5° to Aft (+) 30°	Fore (-) 12° to Aft (+) 30°	Fore (-) 4° to Aft (+) 14°	Fore (-) 3° to Aft (+) 15°	Fore (-) 3° to Aft (+) 15°	Fore (-) 5° to Aft (+) 14°	Fore (-) 5° to Aft (+) 14°	Fore (-) 5° to Aft (+) 14°	N/A	
	Camber	0°, 3°, 6°	0°, 3°, 6°	0°, 3°, 6°	0° to 3°	0° to 11°	0° to 11°	0°	0°	0°, 4°	0°, 2°, 4°, 6°	0°, 2°, 4°, 6°	0° to 7°	0°, 3°	1° to 5°	1° to 5°	0°	
	Tension Adj. Upholstery	Yes	Yes	Yes	Yes	Yes	Yes	No	No	No	Yes	Yes	Yes	Yes	Yes	Yes	No	
Clinical Applications	Front Seat-to-Floor Ht.	16" to 21"	16" to 21"	16" to 21"	15" to 20"	15.5" to 23"	15.5" to 23"	12.5" to 19"	14" to 20.5"	–	15.5" to 21"	13.5" to 22"	17" to 22"	12.5" to 19.5"	16" to 20.5"	16" to 20.5"	17" to 20"	
	Rear Seat-to-Floor Ht.	13" to 20"	13" to 20"	13" to 20"	14" to 20"	14.5" to 20.5" (GP) 14.5" to 20.6" (GPV)	14.5" to 20.5"	12.5" to 19"	14" to 20.5"	–	13" to 19.5"	13" to 22"	15.5" to 21"	12" to 19"	15" to 19.5"	15" to 19.5"	17" to 20"	
	Footrest/Frame Angle	75°, 80°, 85°	70°, 80°, 85°	75°, 80°, 85°	75°, 80°, 85°	70°, 80°, 85°	Swing-Away	60°, 70°, 80°, 90°, Elevating	70°, 80°, Elevating	60°, 70°, 80°, 90°, Elevating	70°, 80°	Swing-Away	60°, 70°	60°, 70°, 80°, Elevating	Swing-Away	Swing-Away	Swing-Away	
	Fold-Down Back	No	Yes	Yes	Yes	Yes	Yes	Yes	Optional	No	No	No	No	No	No	No	No	
	Adjustable Back Height	Fixed	Adj. 8" to 20"	Adj. 10" to 20"	Adj. 14" to 20"	Adj. 8" to 20"	Adj. 8" to 20"	Adj. 15" to 21" or 18" to 24"	Adj. 15" to 21" or 18" to 24"	No	9" to 21"	9" to 21"	8.5" to 20"	13" to 17" or 16" to 20"	14" to 19"	14" to 19"	16.75" to 20.13"	
	Center of Gravity (COG)	0.5" to 4"	0" to 4"	-1.5" to 4"	1" to 3"	0.5" to 3.5"	0.5" to 3.5"	N/A	N/A	N/A	0.5" to 3"	-1" to 4.5"	0.5" to 3.5"	1" to 3"	0.5" to 3.5"	0"	N/A	
	Tilt Range	–	–	–	–	–	–	40° or 55°	45°	53°	–	–	–	–	–	–	–	
Lifestyle Options	Xtender™ Power Assist	No	Yes	Yes	No	Yes	Yes	No	No	No	No*	Yes	Yes	No	No	No	No	No
	Front Suspension	Yes	Yes	Yes	Yes	Built-4-Me	Built-4-Me	Built-4-Me	Built-4-Me	Built-4-Me	Yes	Yes	Yes	Built-4-Me	Built-4-Me	Built-4-Me	No	
	Rear Suspension	No	Yes	Yes	No	No	No	No	No	No	No	No	No	No	No	No	No	
	Transit	Yes°	Yes°	Yes°	Yes°	No	No	Yes°	Yes	No	Yes°	Yes°	Yes	Yes	Yes	No	No	
	Warranty	Limited Lifetime	Limited Lifetime	Limited Lifetime	Limited Lifetime	Limited Lifetime	Limited Lifetime	Limited Lifetime	Limited Lifetime	Limited Lifetime	Limited Lifetime	Limited Lifetime	Limited Lifetime	Limited Lifetime	Limited Lifetime	Limited Lifetime	Limited Lifetime	

* Additional options available through Quickie Built-4-Me.

† Transport Weight = all items that can be removed without tools to depict transporting into or out of a vehicle.
Standard Weight = 16" x 16" chair with wheel locks.

° Conforms with ANSI/RESNA WC-19 standards. Please refer to Quickie® & Zippie® WC-19 Transit Securement Supplement (MK-100072) for additional information. Supplement is available for download at www.SunriseMedical.com

Quickie Colors

IMPORTANT NOTE: Print processes cannot accurately represent paint finishes. Actual colors may vary.

IMPORTANT NOTE: The color options shown are for reference only. They are not intended as accurate representations. Refer to the Quickie Color Brochure or a Quickie Color Ring for representations of Quickie colors.

1. Kolorfusion™ available on select Quickie chairs.
2. Black Zebra Kolorfusion™ pattern is available on any base color. Shown here on Candy Blue.

JAY[®] Seating Selection

JAY BACKS



Basic
E2611



GO™
E2611, E2612



Care™
E2615



J2™
E2613



J2™ Deep Contour
E2620



Focus Point
E2620



J3™ PA
E2613, E2614



J3™ PL
E2615

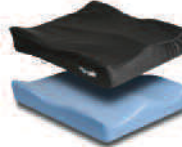


**J3™ PD, PDL
& PDC**
E2620

JAY CUSHIONS



Basic
E2601, E2602



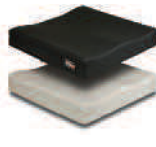
Soft Combi™ P
E2605, E2606



Care™
E2607, E2608



Zip™
E2607



GO™
E2603, E2604



Ion™
E2607, E2608



Easy™
E2607, E2608



Lite™
E2603, E2604,
E2607, E2608



Union™
E2607, E2608



X2™
E2622



J2™
E2622, E2623,
E2624, E2625



J2™ Deep Contour
E2622, E2623,
E2624, E2625



Fusion™
E2622, E2623



J3™
E2622, E2623
E2624, E2625

built4me

Our Built-4-Me Team is dedicated to creating product customizations beyond what is listed on our product order forms. Experts in the engineering and manufacturing of custom rehab products will listen to your specific requests and build a chair as individual as your fingerprint!