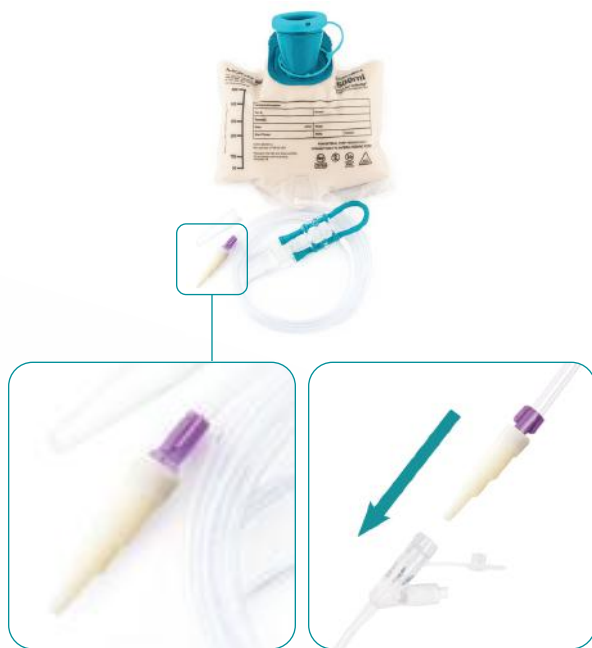




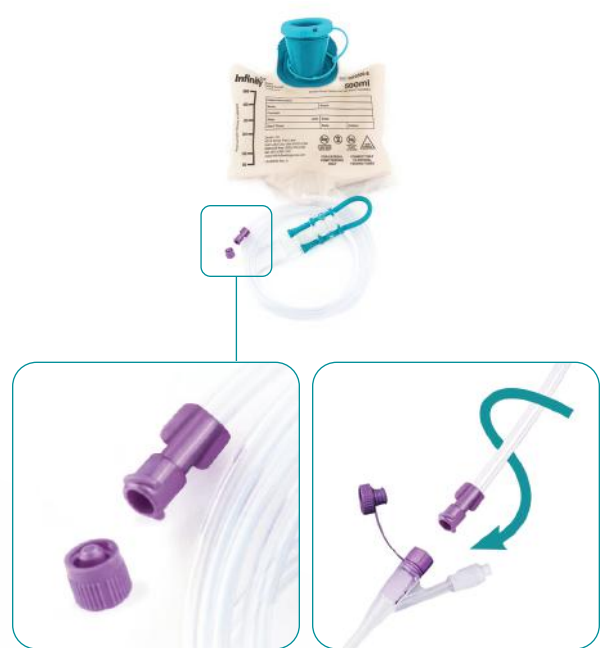
Infinity is happy to introduce a NEW 500 mL enteral bag set for use with the Infinity Enteral Feeding Pump. This new set, order code **INF0500-E**, comes with **ONLY** the ENFit connector and is specifically for use with ENFit-compatible enteral feeding tubes. The current 500 mL enteral bag set, order code **INF0500-A**, is still available for purchase and will continue to include the ENFit connector system **AND** transitional stepped connector.



EXISTING **INF0500-A**

500 mL Enteral Pump Deliver Set with ENFit Connector System and Transitional Stepped Connector

Unit of Measure: Case
Quantity/Case: 30 each



NEW **INF0500-E**

500 mL Enteral Pump Delivery Set with ENFit Connector

Unit of Measure: Case
Quantity/Case: 30 each



Speak live with a Moog Clinical Representative for pump questions and troubleshooting guidance 24 hours per day, 7 days per week.

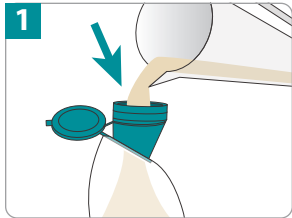
ENFit[®] is a registered trademark of GEDSA.
Infinity[®] is a registered trademark of Zevox, Inc.
Moog[®] is a registered trademark of Moog, Inc.
© 2020 Moog, Inc. Moog Medical, 4314 Zevox Park Lane,
Salt Lake City, UT 84123 USA. LS-81004 Rev. A

MOOG[®]
Enhancing Healthcare.
Enriching Lives.[™]

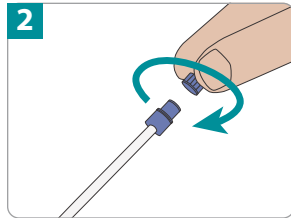
Quick Reference Instructions for INF0500-E

These instructions are not a substitute for the Instructions for Use. Be sure to read the INF0500-E Instructions for Use and Infinity Enteral Feeding Pump Operator's Manual thoroughly prior to operating the pump.

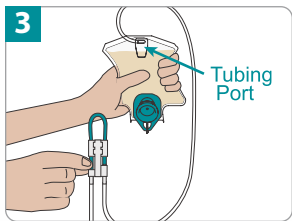
If using a backpack



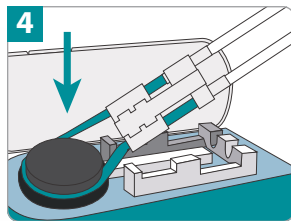
1 Hold the bag's funnel upright and pour in feeding formula. Close cap tightly.



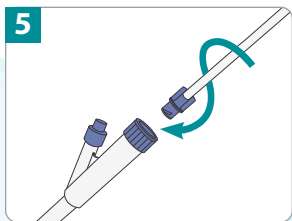
2 Unscrew the protective cover counterclockwise from the ENFit connector.



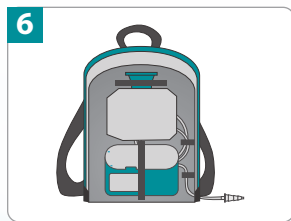
3 **Prime the set manually and remove air** by turning the bag upside down and tilting the bag to keep air at tubing port. Gently pinch teal colored tubing below the "💧" symbol. While pinching, gently squeeze the bag at the same time to assist fluid flow. Hold this position until formula reaches the feeding tube connector.



4 Loop the silicone tubing around the pump wheel stretching lightly. Seat cassette into the pump and close the door.

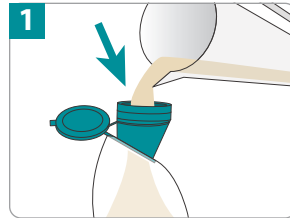


5 Screw the ENFit connector clockwise into feeding tube firmly by hand. Be careful not to overtighten.

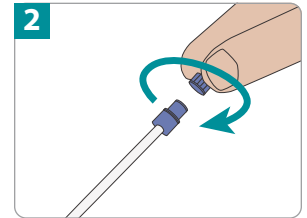


6 Place the pump into the backpack and secure with straps.

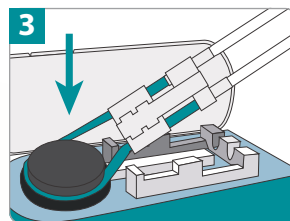
If using an IV pole



1 Hold the bag's funnel upright and pour in feeding formula. Close cap tightly and hang bag.

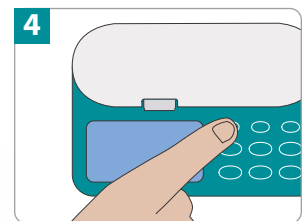


2 Unscrew the protective cover counterclockwise from the ENFit connector.



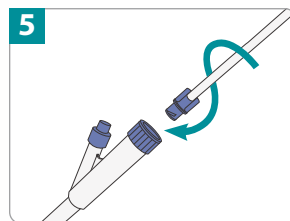
3 **If manually priming, skip to step 6. If using the pump to prime, continue through step 5.**

Loop the silicone tubing around the pump wheel stretching lightly. Seat cassette into the pump and close the door.

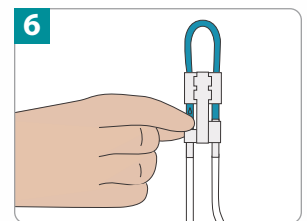


4 Turn pump on by pressing and holding the **ON/OFF** key until the pump beeps.

Then, press and hold the **PRIME** key until formula reaches the feeding tube connector.



5 Screw the ENFit connector clockwise into feeding tube firmly by hand. Be careful not to overtighten.



6 **To manually prime**, gently pinch teal colored tubing below the "💧" symbol. While pinching, gently squeeze the bag at the same time to assist fluid flow. Hold this position until formula reaches the feeding tube connector.

When primed, refer to steps 3 and 4 to load the set into the pump and connect set to the feeding tube.

